

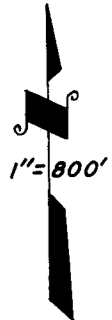
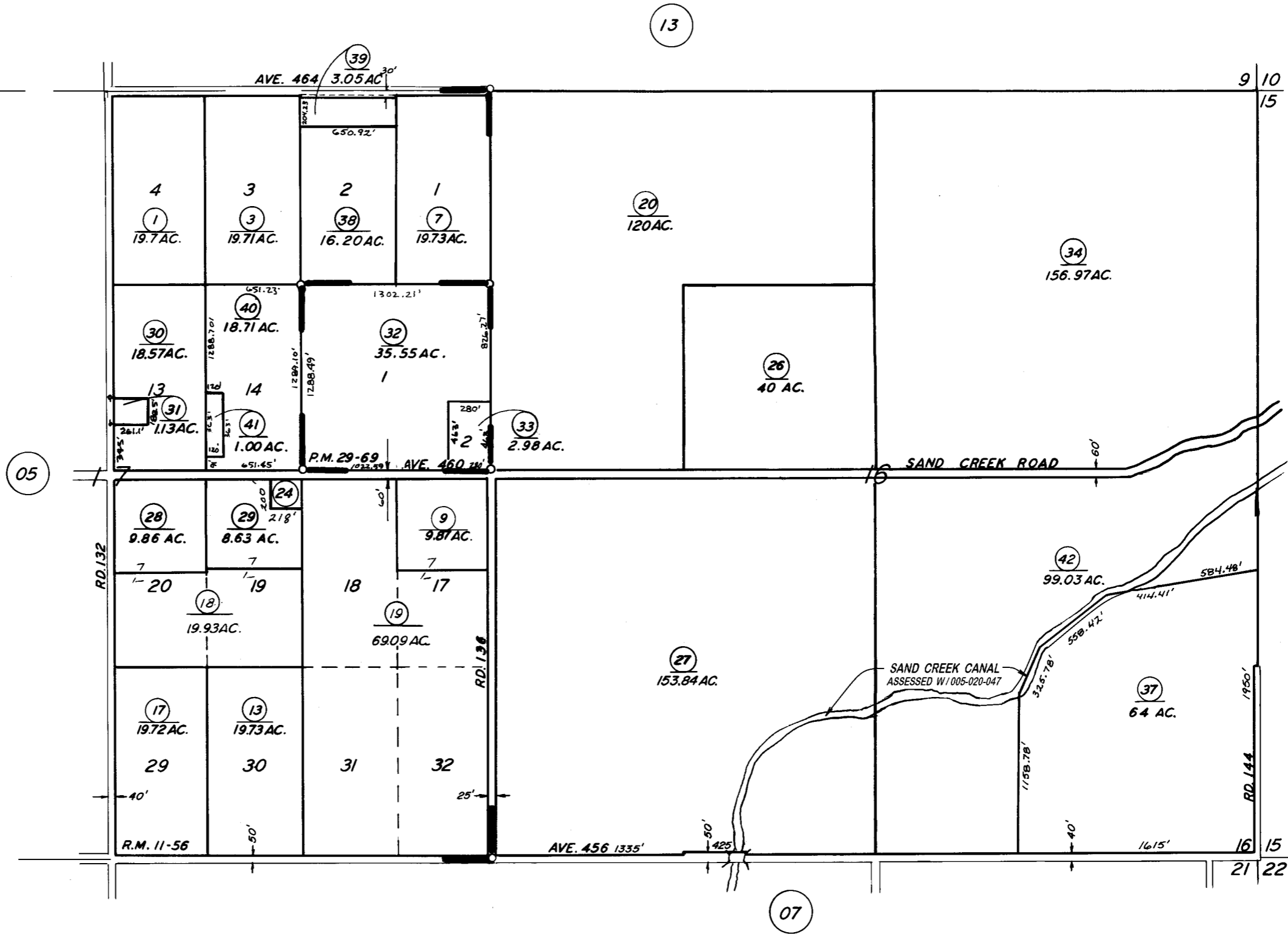
**DISCLAIMER**  
 THIS MAP WAS PREPARED FOR LOCAL PROPERTY ASSESSMENT PURPOSES ONLY. THE PARCELS SHOWN HEREON MAY NOT COMPLY WITH STATE AND LOCAL SUBDIVISION ORDINANCES. NO LIABILITY IS ASSUMED FOR THE USE OF THE INFORMATION HEREON. R & T CODE SEC. 327, 408.3, ETC.

REVISED: 08/06/2015  
 REASON: SAND CREEK CANAL  
 TECHNICIAN: KMS

SEC. 16, 17, T.15 S., R.25 E., M.D.B. & M.

TAX CODE AREA  
 077-000

005-04



POR. OROSI ORANGE LANDS, R.M. 11-56  
 PARCEL MAP 2868, P.M. 29-69

VICINITY OF ORANGE COVE  
 ASSESSOR'S MAPS BK. 005, PG. 04  
 COUNTY OF TULARE, CALIF.

NOTE — ASSESSOR'S BLOCK NUMBERS SHOWN IN ELLIPSES  
 ASSESSOR'S PARCEL NUMBERS SHOWN IN CIRCLES