

DISCLAIMER
THIS MAP WAS PREPARED FOR LOCAL PROPERTY ASSESSMENT PURPOSES ONLY AND THE PARCELS SHOWN HEREON MAY NOT COMPLY WITH STATE AND LOCAL SUBDIVISION ORDINANCES, AND NO LIABILITY IS ASSUMED FOR THE USE OF THE INFORMATION SHOWN HEREON. R & T CODE SEC. 327, 408.3, ETC.

52

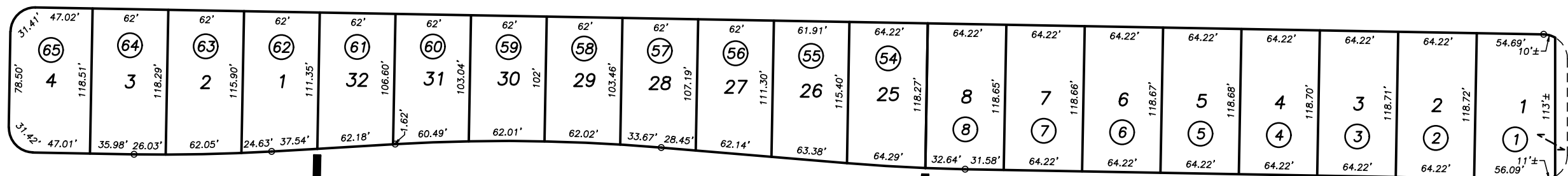
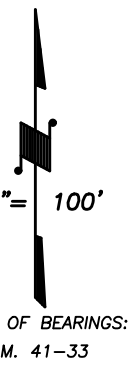
CTR. SEC.

R.M. 41-53

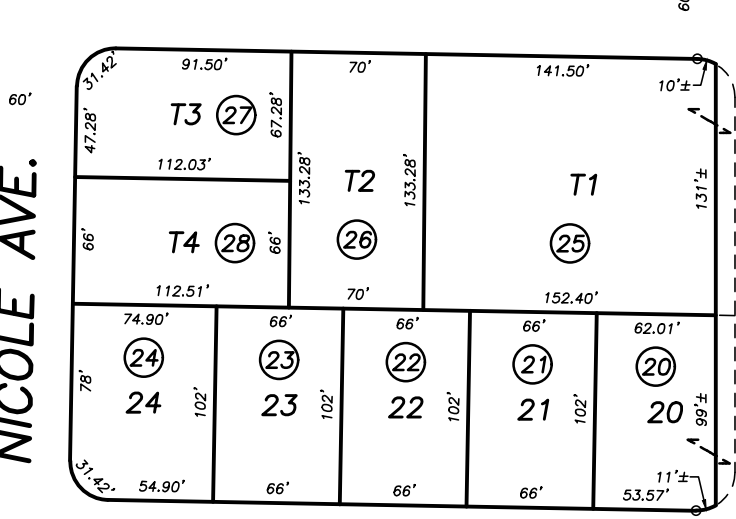
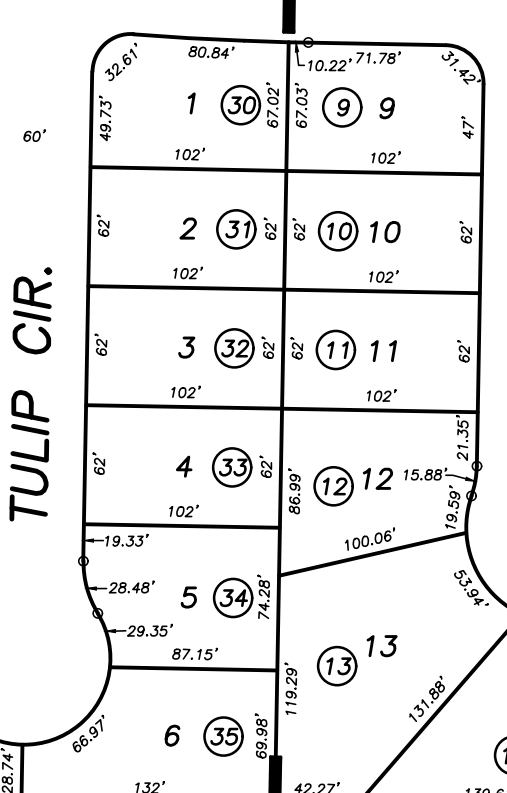
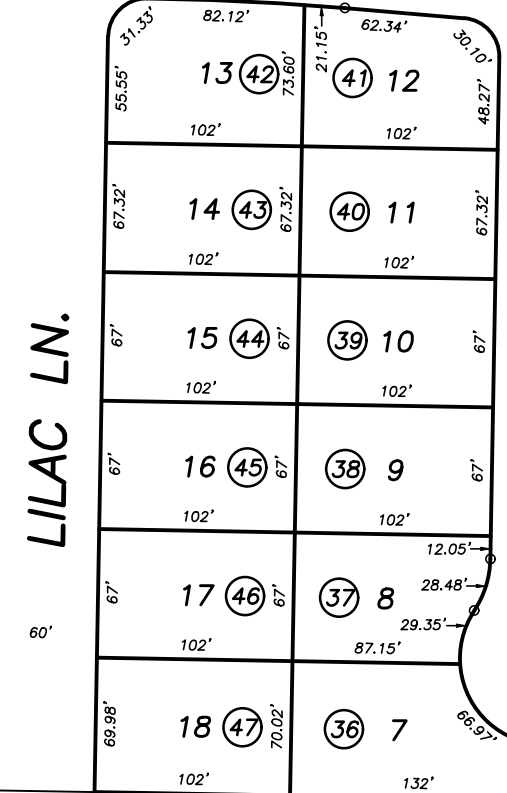
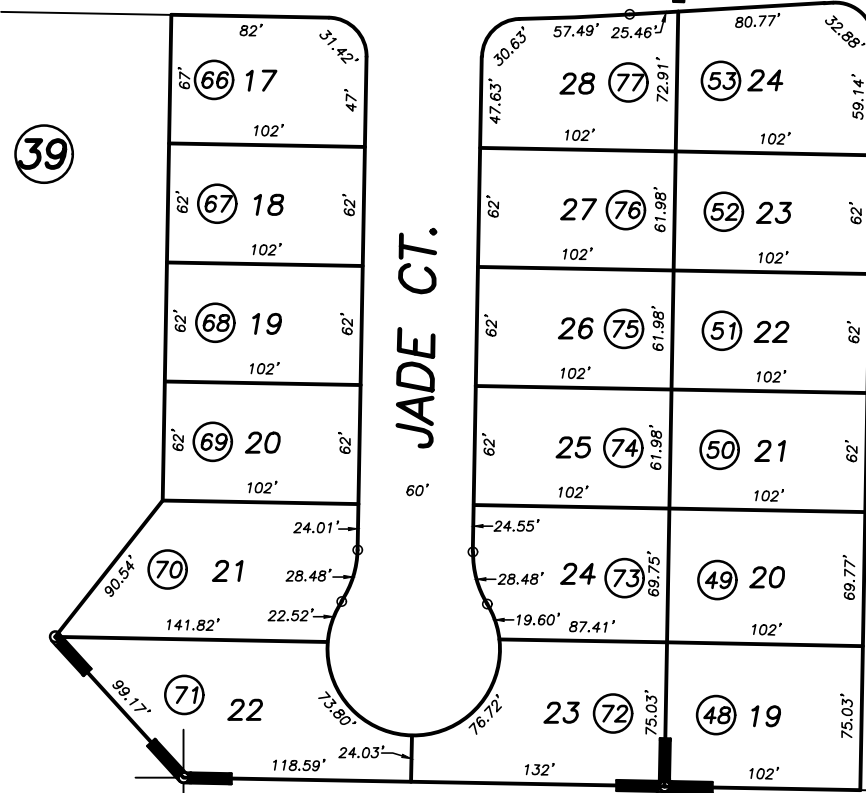
R.M. 41-52 R.M. 41-33

N.1/4 COR. SE1/4

SAGINAW AVE.



ASHLEY AVE.



LYNN AVE.

1/64 COR.

1/64 COR.

POR. VISCAYA II TRACT - PHASE I, R.M. 41-33
VISCAYA II TRACT - PHASE II, R.M. 41-52
POR. VISCAYA II TRACT - PHASE III, R.M. 41-53

CITY OF DINUBA
ASSESSOR'S MAPS BK. 014 , PG. 51
COUNTY OF TULARE, CALIFORNIA, U.S.A.

31