

N. 1/4 COR.
SEC. 17

POR. N1/2 OF NE1/4 OF NW1/4 SEC.17, T.16S., R.24W., M.D.B.&M.

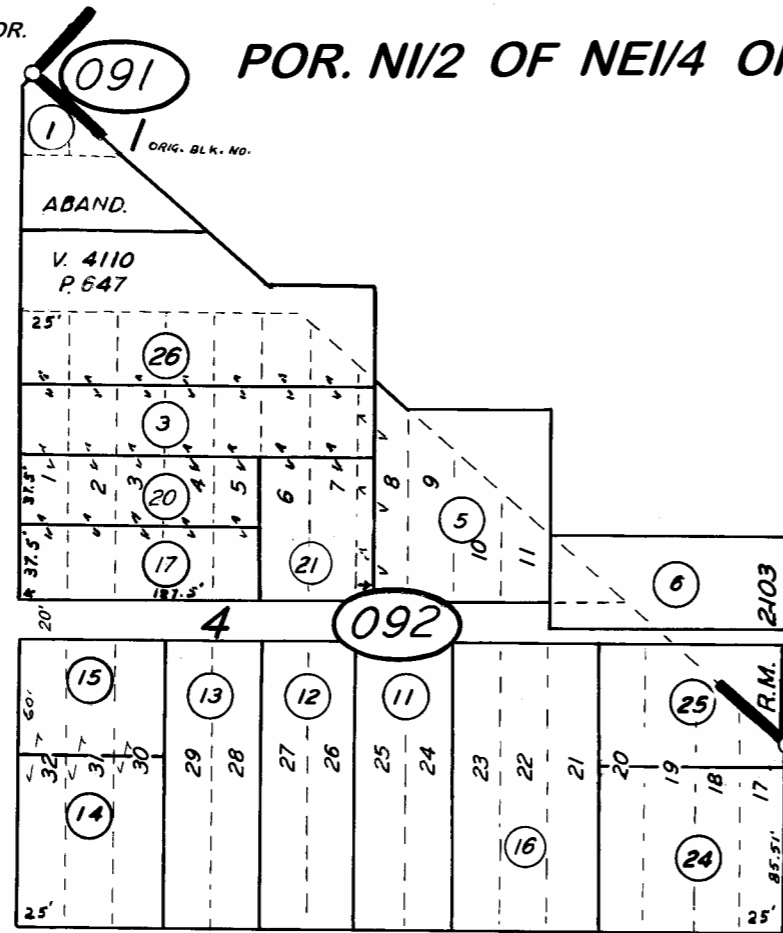
TAX CODE AREA 017-09

001-007
001-035

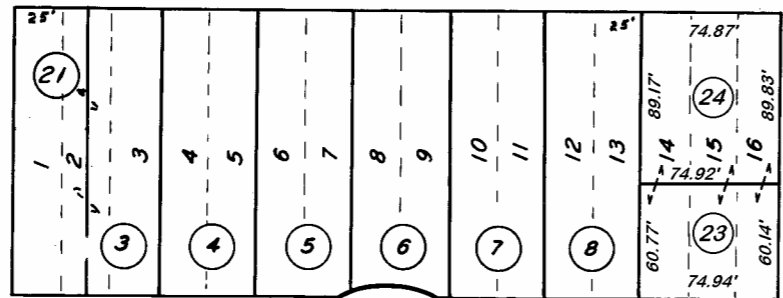
EL MONTE WAY

DISCLAIMER
THIS MAP WAS PREPARED FOR LOCAL PROPERTY ASSESSMENT PURPOSES ONLY. THE PARCELS SHOWN HEREON MAY NOT COMPLY WITH STATE AND LOCAL SUBDIVISION ORDINANCES. NO LIABILITY IS ASSUMED FOR THE USE OF THE INFORMATION HEREON. R & T CODE SEC. 327, 408.3, ETC.
REVISED: 10/29/2019
REASON: 2019-0033901
CAD TECH: CFG

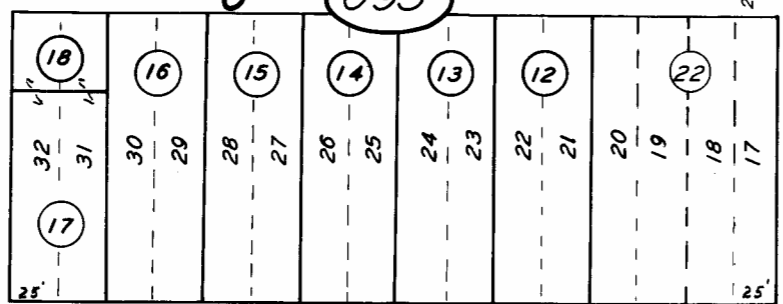
STREET



"H" STREET



093



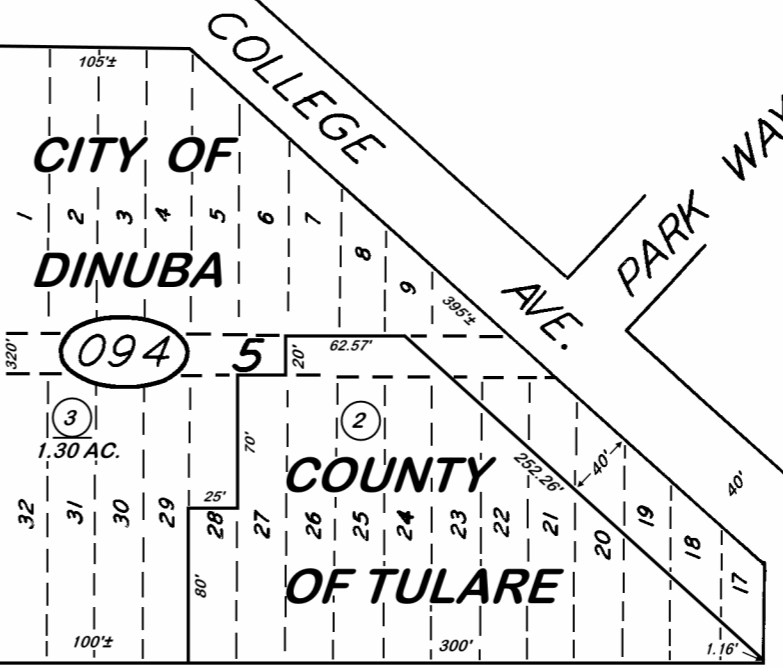
CITY OF
DINUBA

COUNTY
OF TULARE

094

STREET

TULARE STREET



STREET

CITY OF DINUBA

ASSESSOR'S MAPS BK. 017, PG. 09

COUNTY OF TULARE, CALIF.

POR. TOWN OF DINUBA, R.M. 1-105
POR. F.E. RICE ADD., R.M. 2-103

NOTE — ASSESSOR'S BLOCK NUMBERS SHOWN IN ELLIPSES
ASSESSOR'S PARCEL NUMBERS SHOWN IN CIRCLES

10