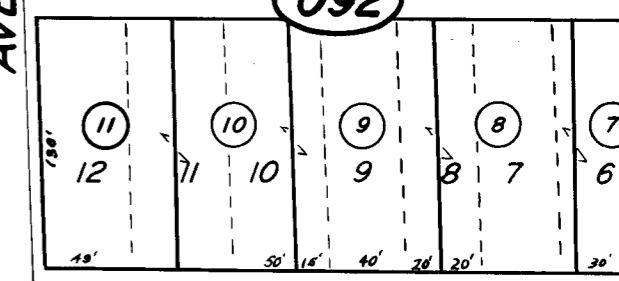
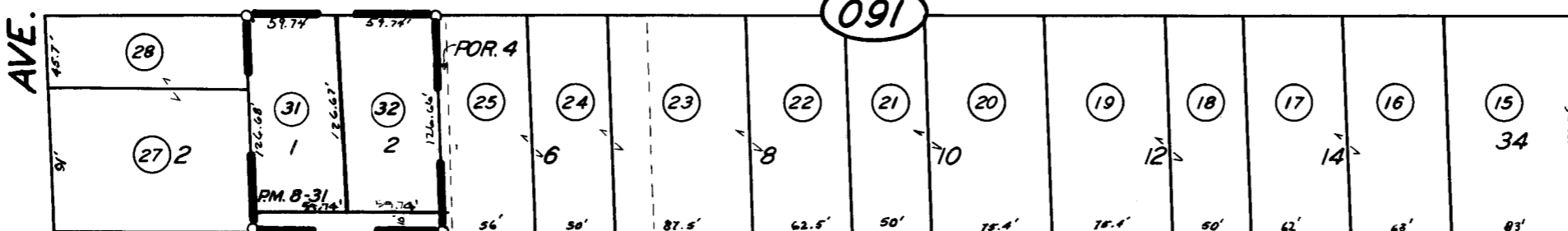
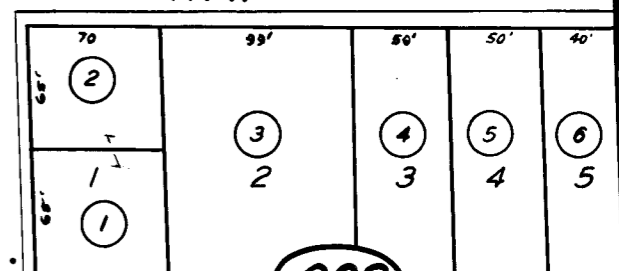
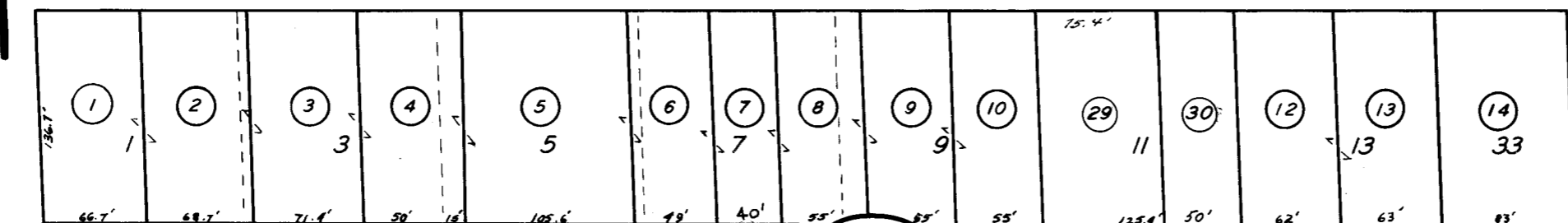


08

CEN. SEC. 17.

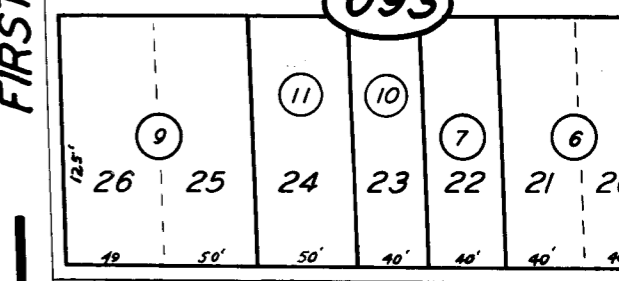
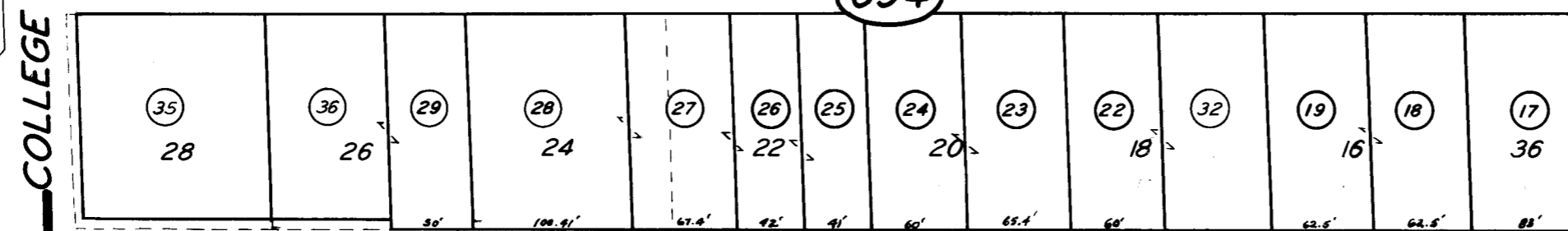
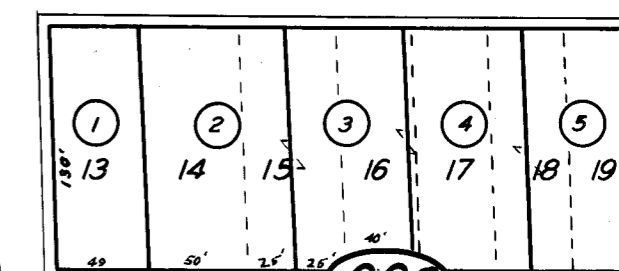
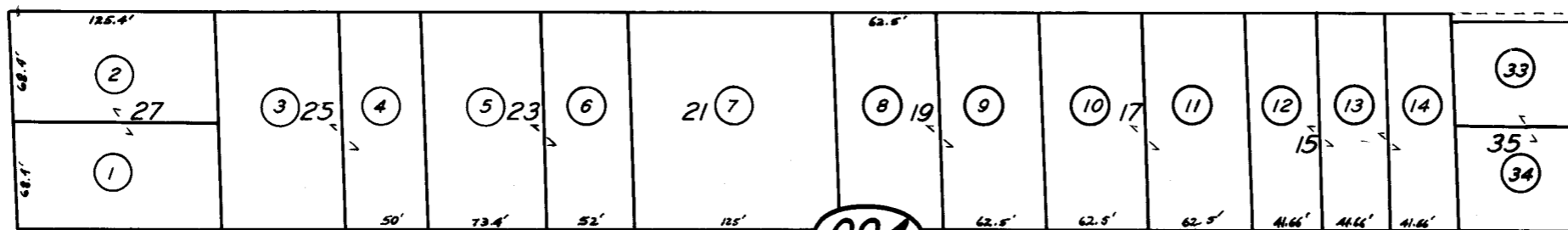
SIERRA

WAY



WHITTAKER

WAY



ACADEMY

WAY

R.M. 2-113.

R.M. 16-59.

POR. OF HADEN & BOONE ADD., R.M. 2-113.

CITY OF DINUBA
ASSESSOR'S MAPS BK. 18, PG. 09.

RHODES SUB., R.M. 16-59.
PARCEL MAP 731, P.M. 8-31

COUNTY OF TULARE, CALIF.

NOTE- ASSESSOR'S BLOCK NUMBERS SHOWN IN ELLIPSES
ASSESSOR'S PARCEL NUMBERS SHOWN IN CIRCLES

1959

BK. 17

INYO ST.
COLLEGE ST.

1" = 100'

10