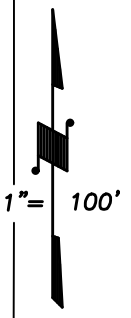


DISCLAIMER  
THIS MAP WAS PREPARED FOR LOCAL PROPERTY ASSESSMENT PURPOSES ONLY AND THE PARCELS SHOWN HEREON MAY NOT COMPLY WITH STATE AND LOCAL SUBDIVISION ORDINANCES, AND NO LIABILITY IS ASSUMED FOR THE USE OF THE INFORMATION SHOWN HEREON. R & T CODE SEC. 327, 408.3, ETC.



BASIS OF BEARINGS:  
R.M. 41-42

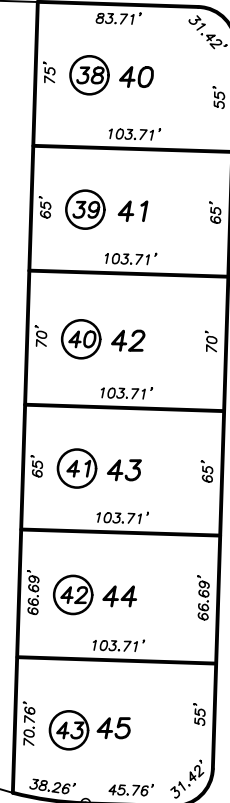
1/64 COR.

FORT WORTH AVE.

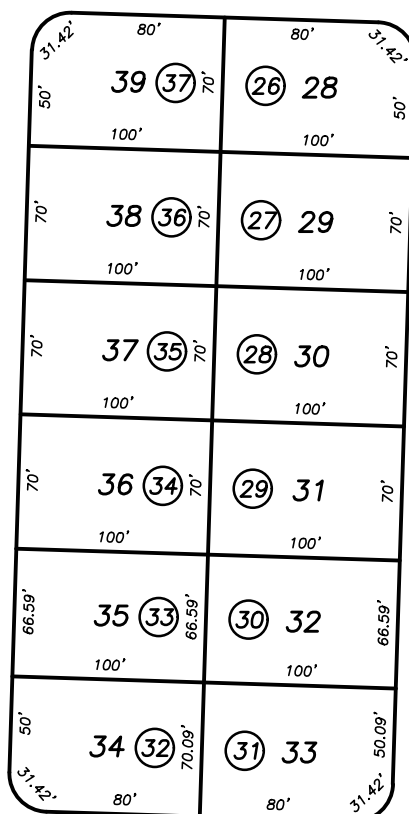
AMARILLO ST.

1/64 COR.

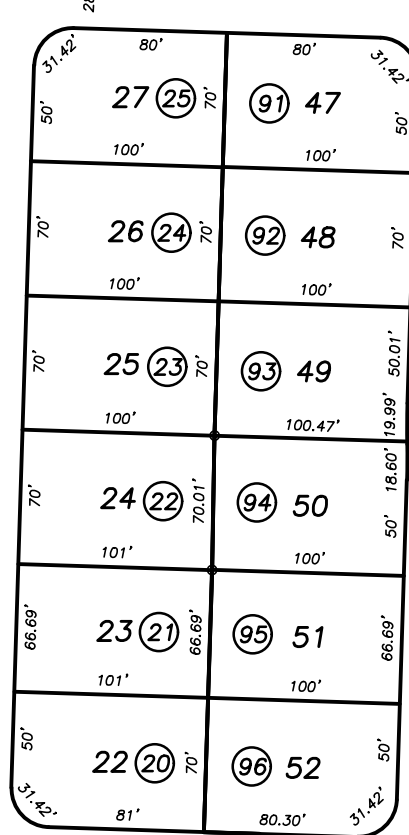
S. CRAWFORD AVE. (RD. 88)



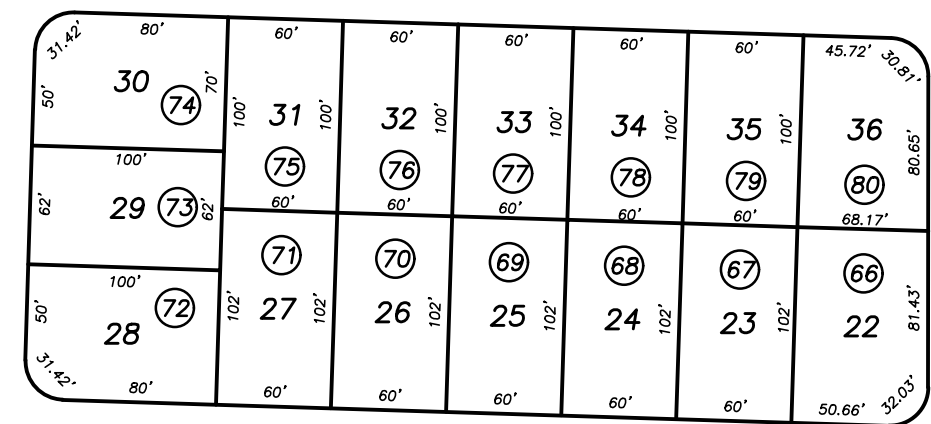
DALLAS ST.



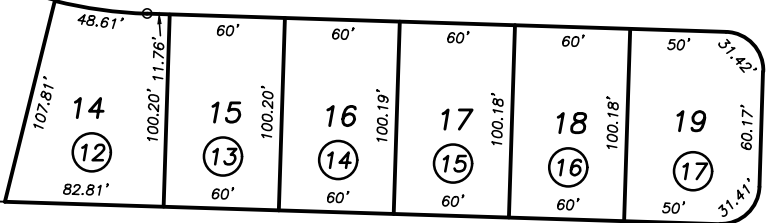
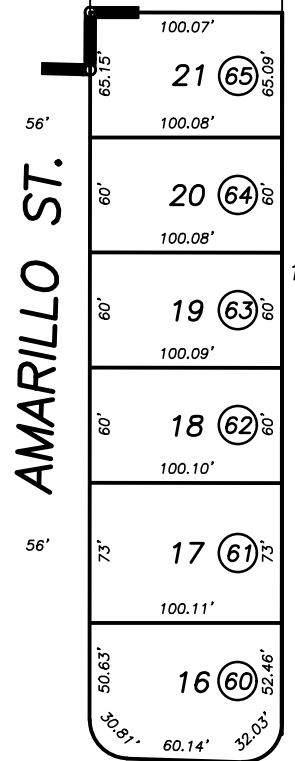
LAREDO ST.



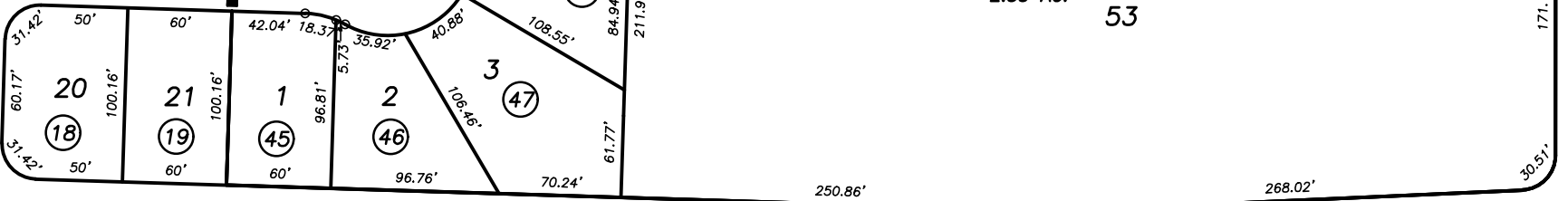
HOUSTON ST.



AUSTIN AVE.



MESQUITE AVE.



KAMM AVE. (AVE. 408)

R.M. 43-42 R.M. 43-66

CITY LIMIT

CITY OF DINUBA

POR. PARKSIDE VILLAGE UNIT NO. 2, R.M. 43-42  
PARKSIDE VILLAGE UNIT NO. 3, R.M. 43-66

Bk. 030

ASSESSOR'S MAPS BK. 018 , PG. 13  
COUNTY OF TULARE, CALIFORNIA, U.S.A.