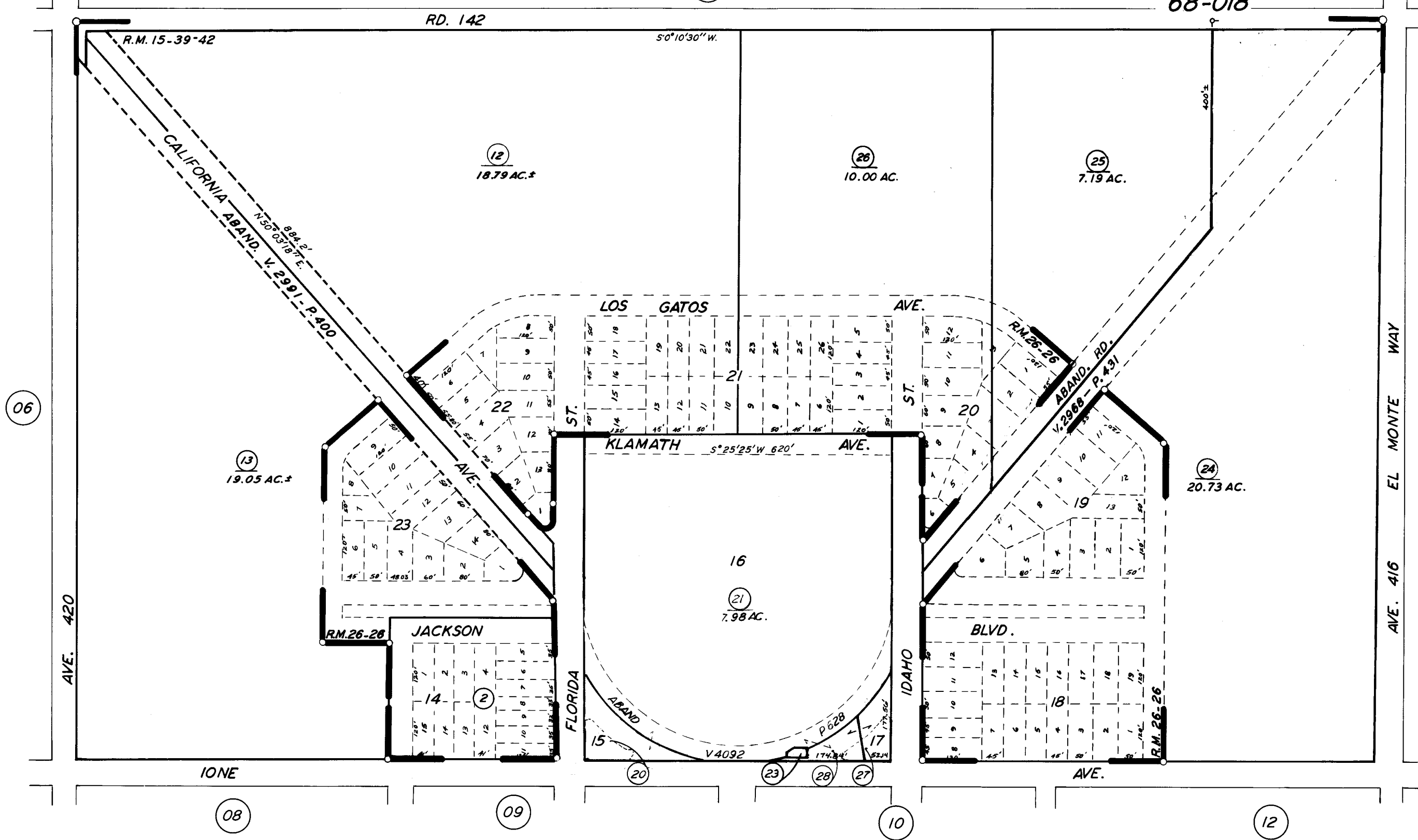
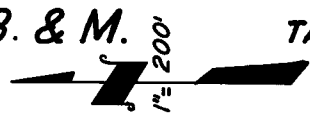


POR. E 1/2 OF SW 1/4 & W 1/2 OF SE 1/4 SEC. 9, T.16S., R.25E., M. D. B. & M.

TAX CODE AREA 25-11
68-015
68-018

07



REVERSION TO AC. R.M. 26-26
POR. OF EAST OROSI R.M. 15-39-42.

ASSESSOR'S MAPS BK. 25, PG. 11.
COUNTY OF TULARE, CALIF.

NOTE- ASSESSOR'S BLOCK NUMBERS SHOWN IN ELLIPSES
ASSESSOR'S PARCEL NUMBERS SHOWN IN CIRCLES

