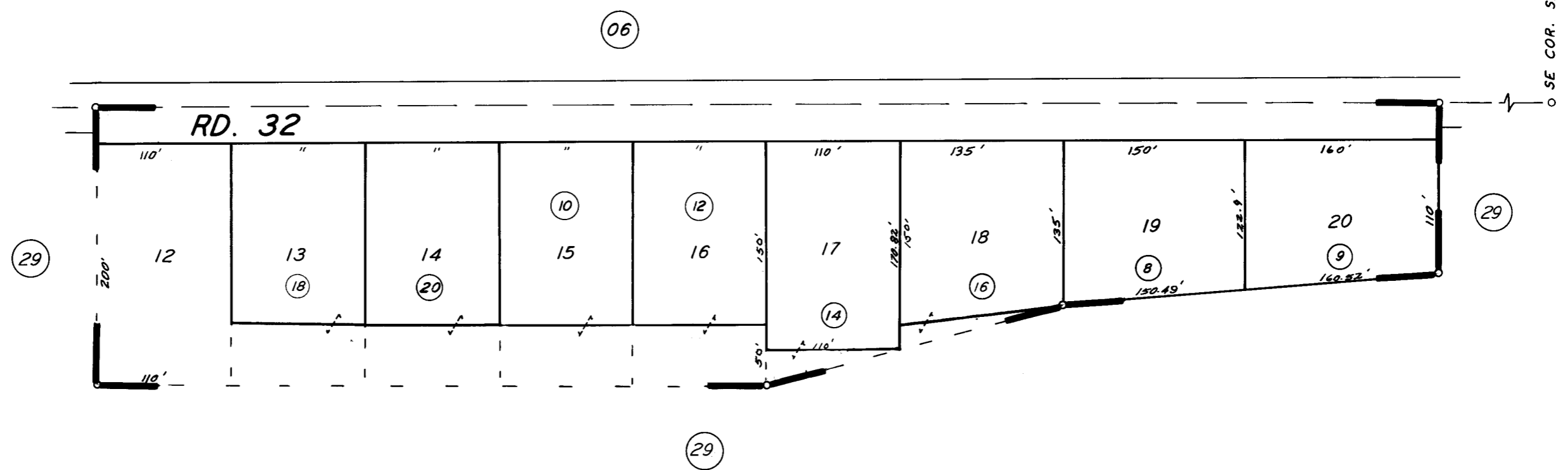
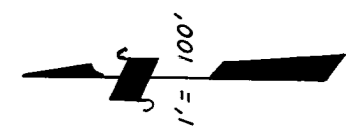


POR. E 1/2 OF SE 1/4 SEC. 19, T.16S., R.23E., M. D. B. & M.

TAX CODE AREA 28-27
100-002



POR. TR. NO. 326 R. M. 22-95.

ASSESSOR'S MAPS BK. 28, PG. 27.

COUNTY OF TULARE, CALIF.

NOTE — ASSESSOR'S BLOCK NUMBERS SHOWN IN ELLIPSES
ASSESSOR'S PARCEL NUMBERS SHOWN IN CIRCLES

