

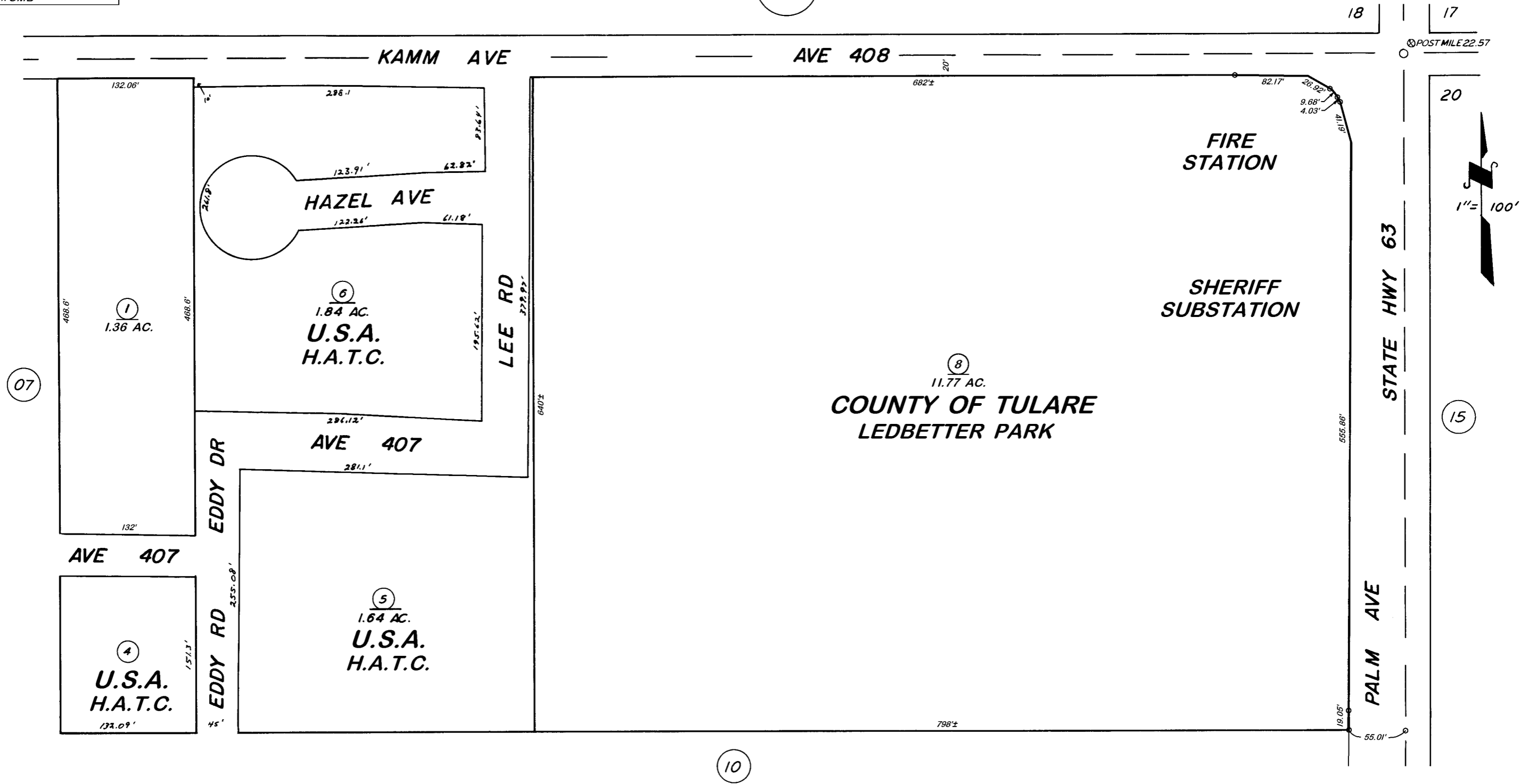
NI/2 OF NE1/4 OF NE1/4 SEC.19, T.16S., R.25E., M.D.B.&M.

TAX CODE AREA 032-09
068-036
068-038
068-046

BK. 21

DISCLAIMER
THIS MAP WAS PREPARED FOR LOCAL PROPERTY ASSESSMENT PURPOSES ONLY. THE PARCELS SHOWN HEREON MAY NOT COMPLY WITH STATE AND LOCAL SUBDIVISION ORDINANCES. NO LIABILITY IS ASSUMED FOR THE USE OF THE INFORMATION HEREON.

REVISED: 08/21/2013
REASON: 2008-0052351
CAD TECH: CMB



VICINITY OF CUTLER
ASSESSOR'S MAPS BK. 032, PG. 09.
COUNTY OF TULARE, CALIF.

NOTE: Assessor's Parcel Numbers Shown in Circles
Assessor's Block Numbers Shown in Ellipses