

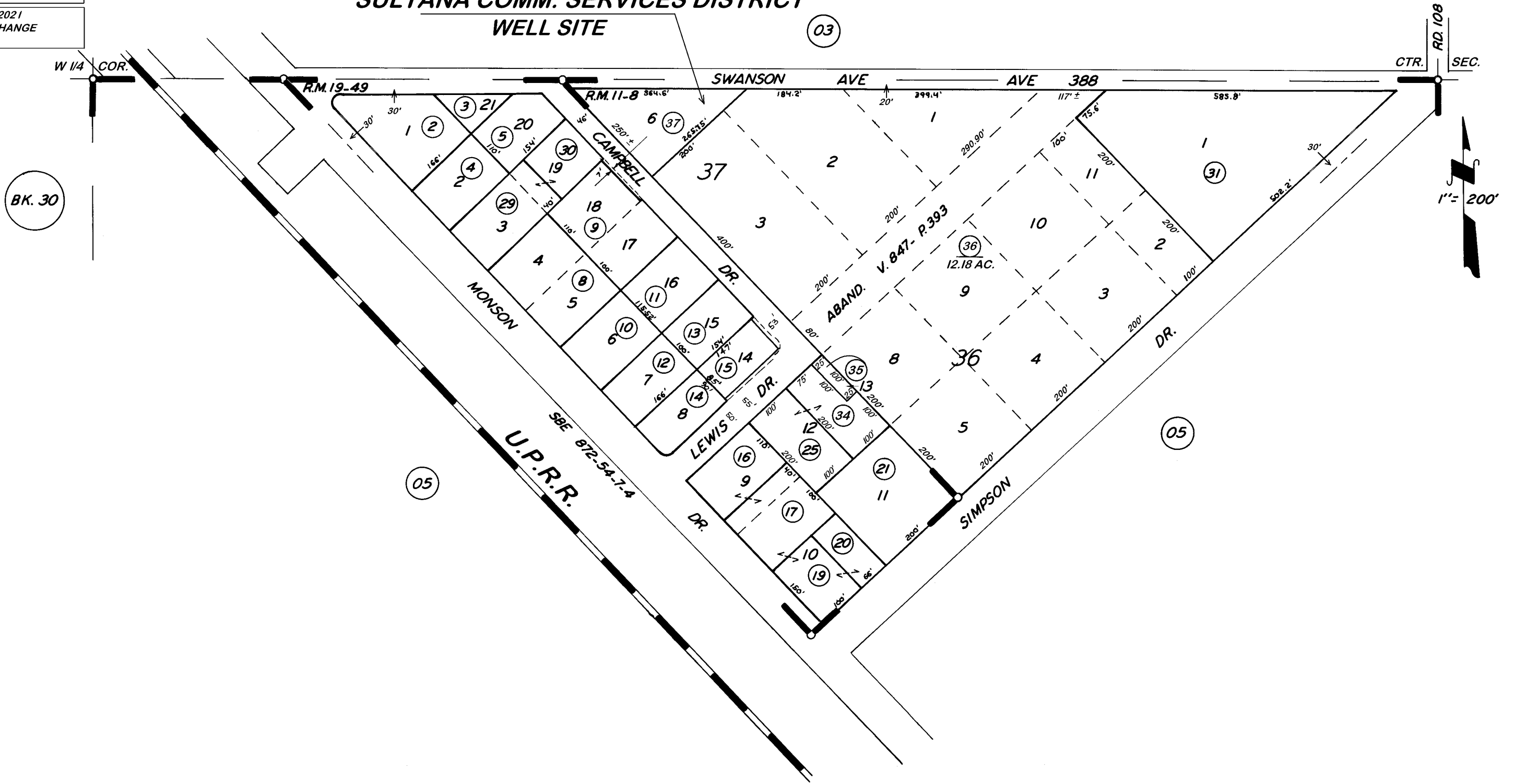
DISCLAIMER
 THIS MAP WAS PREPARED FOR LOCAL PROPERTY ASSESSMENT PURPOSES ONLY. THE PARCELS SHOWN HEREON MAY NOT COMPLY WITH STATE AND LOCAL SUBDIVISION ORDINANCES. NO LIABILITY IS ASSUMED FOR THE USE OF THE INFORMATION HEREON.

REVISED: 05/20/2021
 REASON: TRA CHANGE
 CAD TECH: JOS

POR. N¹/₂ OF SW¹/₄ SEC. 35, T.16S., R.24E., M.D.B.&M.

TAX CODE AREA **033-04**
167-003

SULTANA COMM. SERVICES DISTRICT
WELL SITE



POR. TOWN OF MONSON R.M.11-8
 TRACT NO. 11 R.M. 19-49

VICINITY OF MONSON
 ASSESSOR'S MAPS BK. 033, PG. 04
 COUNTY OF TULARE, CALIF.

NOTE — ASSESSOR'S BLOCK NUMBERS SHOWN IN ELLIPSES
 ASSESSOR'S PARCEL NUMBERS SHOWN IN CIRCLES