

S.1/2 SEC.35, T.16S., R.25E., M.D.B.&M.

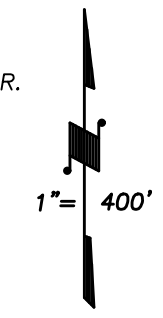
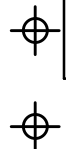
Tax Area Codes 035-33

138-002

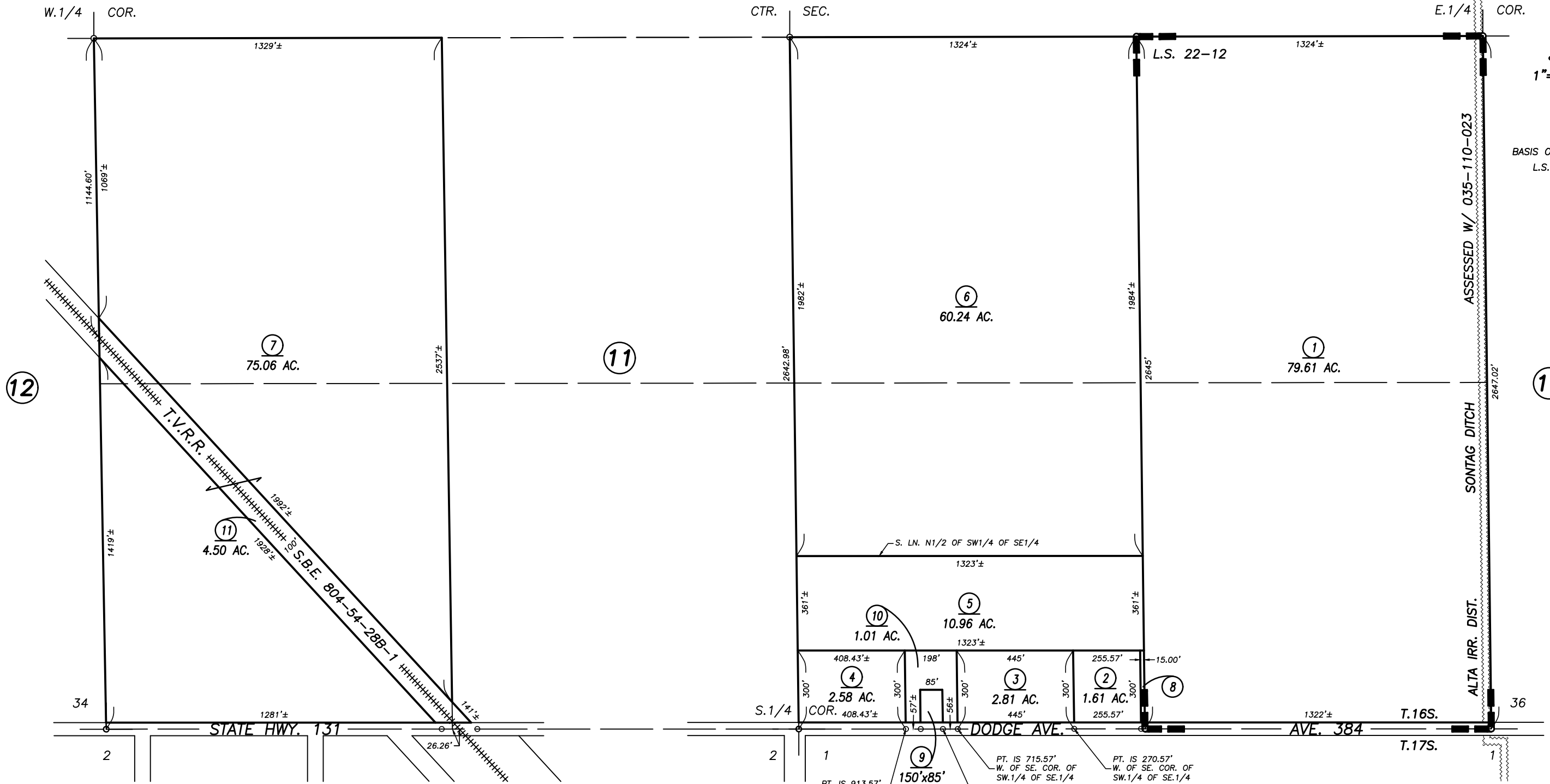
138-004

138-005

DISCLAIMER
 THIS MAP WAS PREPARED FOR LOCAL PROPERTY ASSESSMENT PURPOSES ONLY AND THE PARCELS SHOWN HEREON MAY NOT COMPLY WITH STATE AND LOCAL SUBDIVISION ORDINANCES, AND NO LIABILITY IS ASSUMED FOR THE USE OF THE INFORMATION SHOWN HEREON. R & T CODE SEC. 327, 408.3, ETC.



BASIS OF BEARINGS:
L.S. 22-12



RECORD OF SURVEY, L.S. 22-12

Bk. 050

VICINITY OF SEVILLE
 ASSESSOR'S MAPS BK. 035 , PG. 33
 COUNTY OF TULARE, CALIFORNIA, U.S.A.

NOTE: Assessor's Parcel Numbers Shown in Circles (1) (123) Assessor's Block Numbers Shown in Ellipses

UPDATE R.R.	9/21/2018	AL
REVISION	DATE	TECH