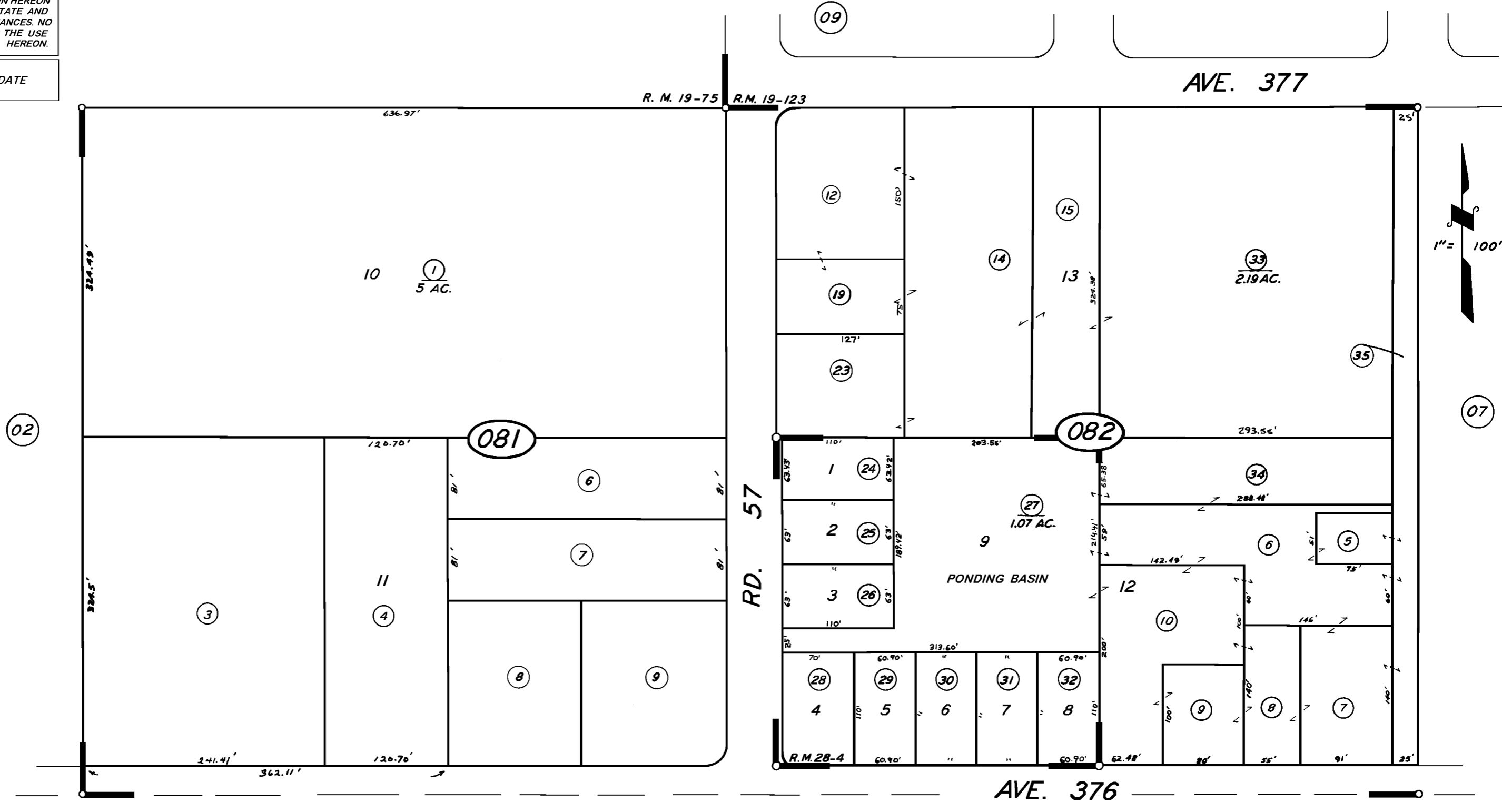


DISCLAIMER
 THIS MAP WAS PREPARED FOR LOCAL PROPERTY ASSESSMENT PURPOSES ONLY. THE PARCELS SHOWN HEREON MAY NOT COMPLY WITH STATE AND LOCAL SUBDIVISION ORDINANCES. NO LIABILITY IS ASSUMED FOR THE USE OF THE INFORMATION HEREON.

REVISED: 07/08/2010
 REASON: ADJ. PG. UPDATE
 CAD TECH: CBT

S 1/2 SW 1/4 SE 1/4 SEC. 2, T.17S., R.23E., M. D. B. & M.

TAX CODE AREA **043-08**
 100-003



POR. TR. NO. 46 R.M. 19-75.
 (NEW LONDON)
 TRACT NO. 559 R.M. 28-4

VICINITY OF NEW LONDON
 ASSESSOR'S MAPS BK. 43, PG. 08.
 COUNTY OF TULARE, CALIF.

14

NOTE — ASSESSOR'S BLOCK NUMBERS SHOWN IN ELLIPSES
 ASSESSOR'S PARCEL NUMBERS SHOWN IN CIRCLES

