

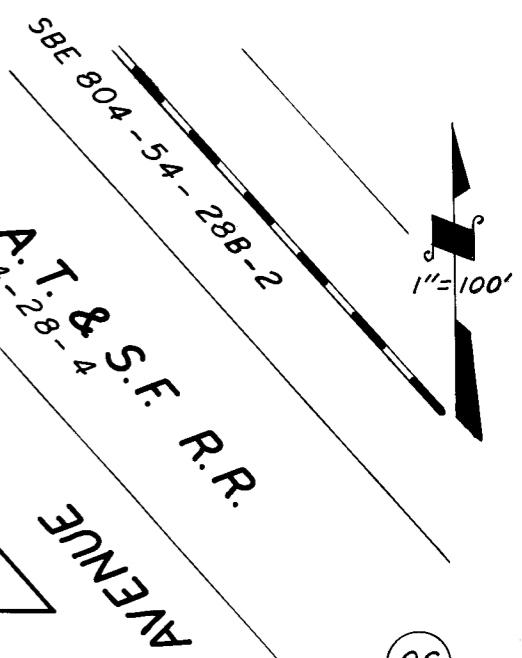
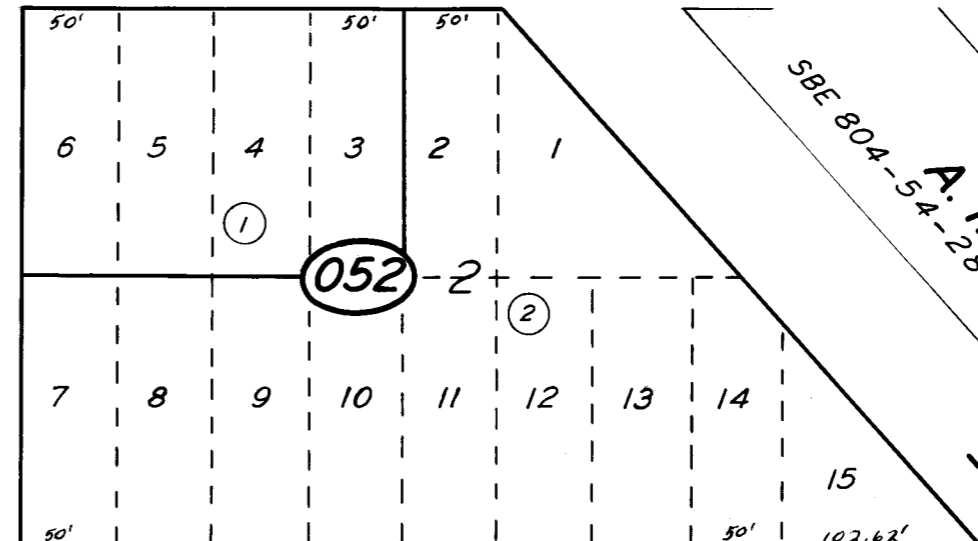
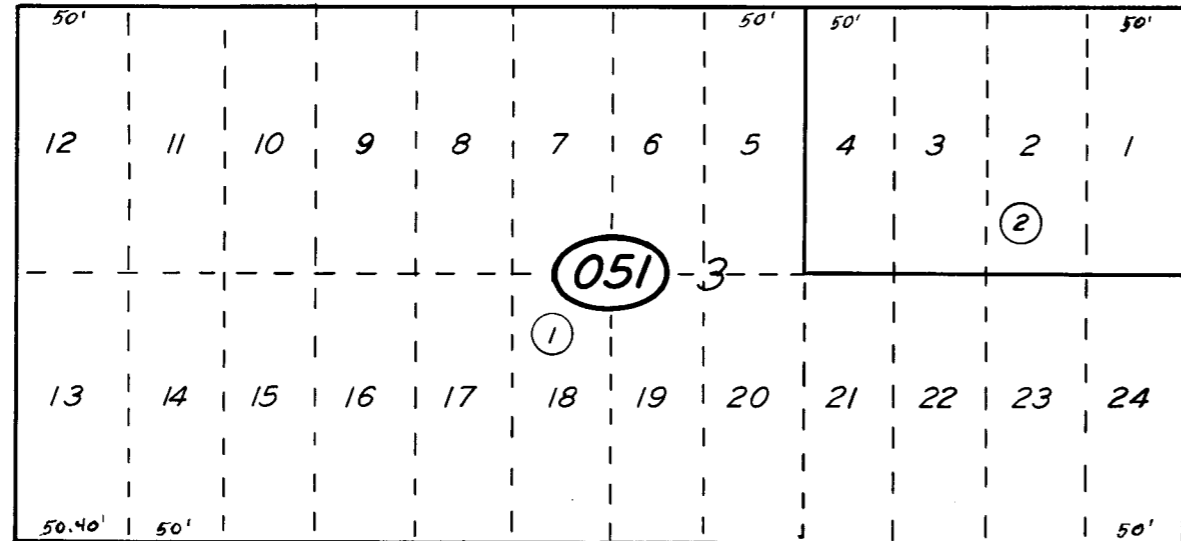
BK. 35

34 35

N 1/4 COR.

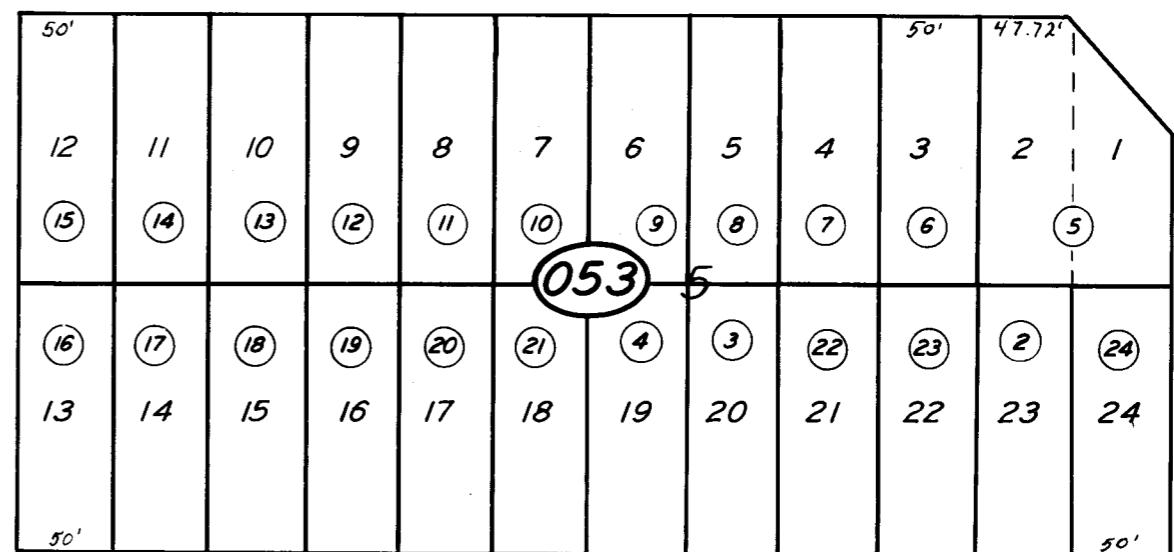
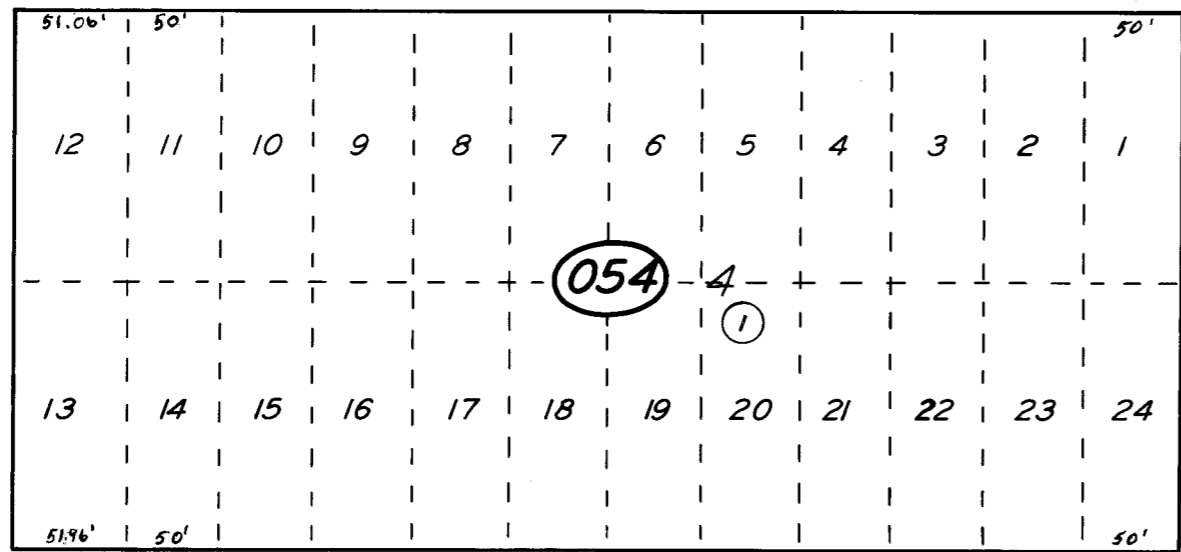
T. 16 S.
T. 17 S.

STATE HIWAY 131 ——— DODGE AVENUE ——— AVE. 384



153

MADERA STREET



ROAD

ROAD 154

AVE. 383

04

06

ROAD NOT ON GROUND

ROAD NOT ON GROUND

POR. SEVILLE TOWNSITE, R.M. 15-4
RECORD OF SURVEY, L.S. 11-41 (NE 1/4 SEC.)

ASSESSOR'S MAPS BK. 50, PG. 05
COUNTY OF TULARE, CALIF.

NOTE — ASSESSOR'S BLOCK NUMBERS SHOWN IN ELLIPSES
ASSESSOR'S PARCEL NUMBERS SHOWN IN CIRCLES

