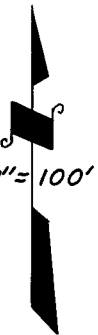
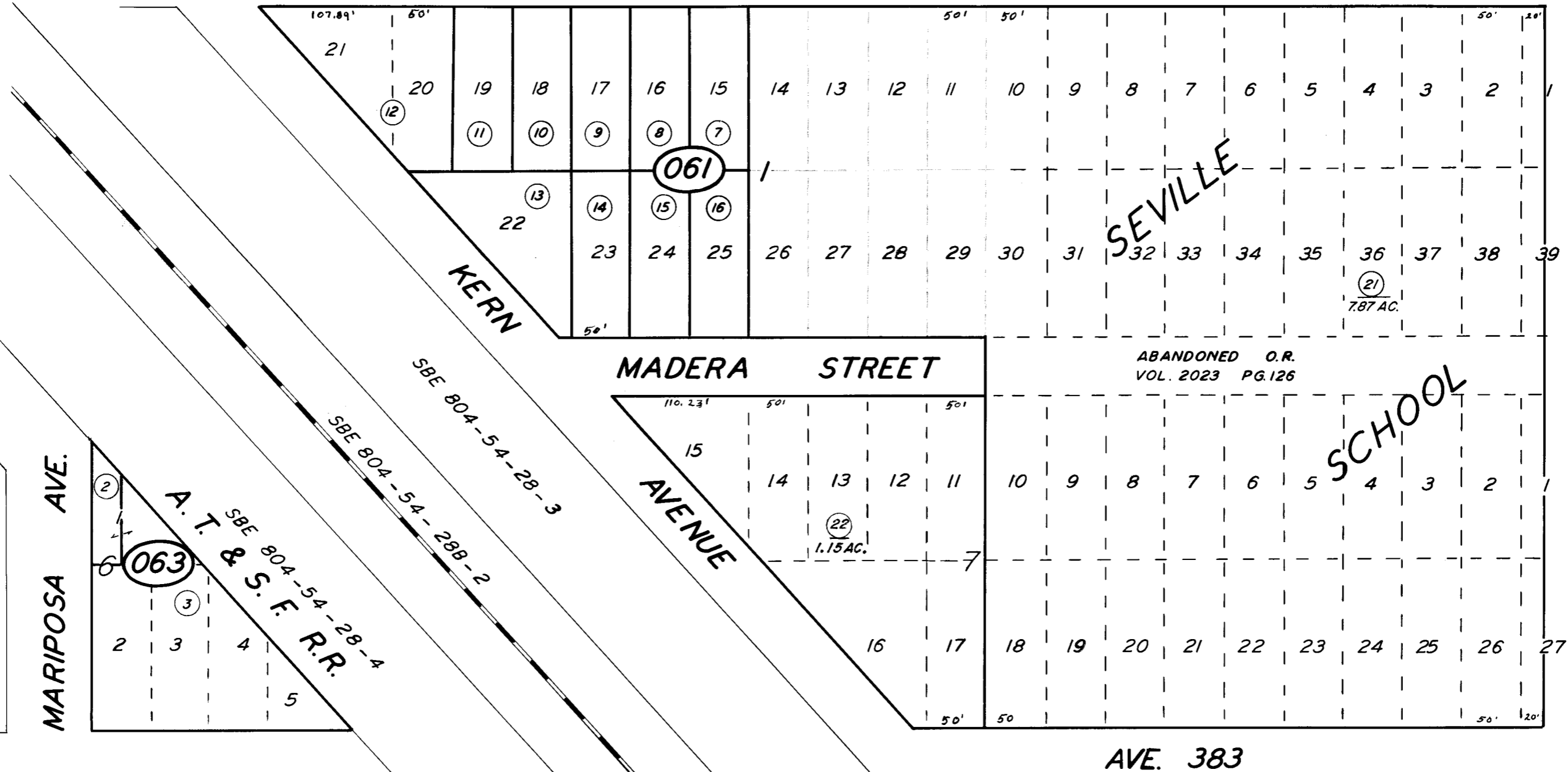


BK. 35

T. 16 S.
T. 17 S.

STATE HIWAY 131 ————— DODGE AVENUE ————— AVE. 384



07

POR. SEVILLE TOWNSITE, R.M. 15-4
RECORD OF SURVEY, L.S. 11-41 (NE 1/4 SEC.)

ASSESSOR'S MAPS BK. 50, PG. 06

COUNTY OF TULARE, CALIF.

NOTE — ASSESSOR'S BLOCK NUMBERS SHOWN IN ELLIPSES
ASSESSOR'S PARCEL NUMBERS SHOWN IN CIRCLES

