

DISCLAIMER

THIS MAP WAS PREPARED FOR LOCAL PROPERTY ASSESSMENT PURPOSES ONLY. THE PARCELS SHOWN HEREON MAY NOT COMPLY WITH STATE AND LOCAL SUBDIVISION ORDINANCES. NO LIABILITY IS ASSUMED FOR THE USE OF THE INFORMATION HEREON. R & T CODE SEC. 327, 408.3, ETC.

REVISED: 01/25/2023
REASON: ADJ PAGE UPDATE
CAD TECH: JOS

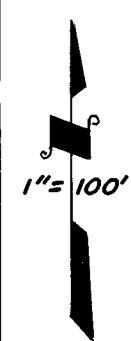
S 1/2 OF NE 1/4 OF NE 1/4 OF SEC.36, T.17S., R.26E., M.D.B.&M.

TAX CODE AREA
007-006

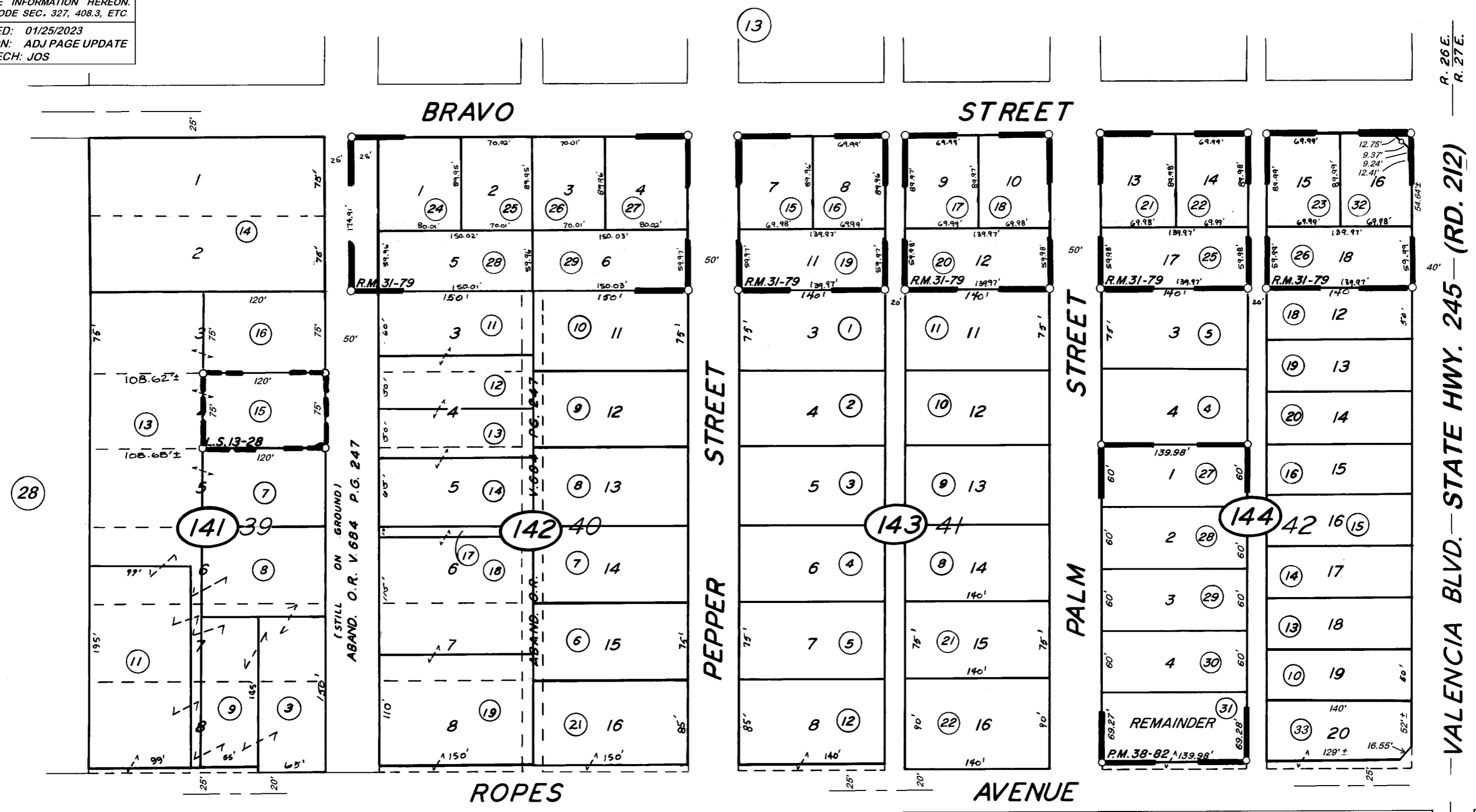
060-14

R. 26E.
R. 27E.

VALENCIA BLVD.—STATE HWY. 245—(RD. 212)



BK.61



**BRAVO ESTATES
TOWNSITE OF WOODLAKE
RECORD OF SURVEY
PARCEL MAP 3779,**

**R. M. 31-79
R.M. 11-23
L.S. 13-28
P. M. 38-82**

**VICINITY OF WOODLAKE
ASSESSOR'S MAPS BK. 060, PG. 14
COUNTY OF TULARE, CALIF.**

NOTE — ASSESSOR'S BLOCK NUMBERS SHOWN IN ELLIPSES
ASSESSOR'S PARCEL NUMBERS SHOWN IN CIRCLES