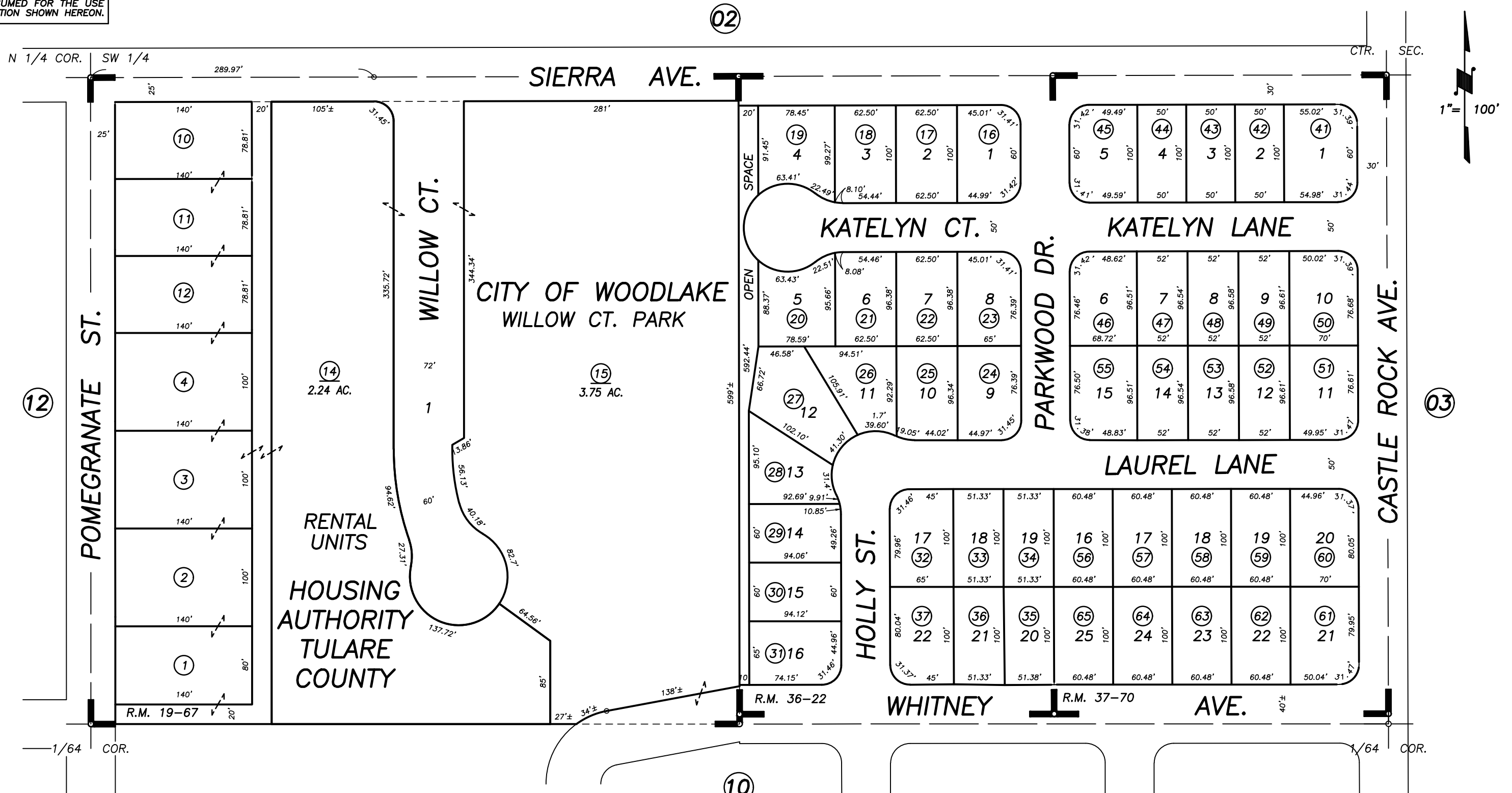


DISCLAIMER
 THIS MAP WAS PREPARED FOR LOCAL PROPERTY ASSESSMENT PURPOSES ONLY AND THE PARCELS SHOWN HEREON MAY NOT COMPLY WITH STATE AND LOCAL SUBDIVISION ORDINANCES, AND NO LIABILITY IS ASSUMED FOR THE USE OF THE INFORMATION SHOWN HEREON.

N 1/2 NE 1/4 OF SW 1/4 SEC. 30, T.17S., R.27E., M.D.B. & M.

Tax Area Code 061-11
 007-006



POR. SHUCK ADDITION, R.M. 19-67
 PARKWOOD, R.M. 36-22
 GENTLE HILLS ESTATES, R.M. 37-70

CITY OF WOODLAKE
 ASSESSOR'S MAPS BK. 061 , PG. 11
 COUNTY OF TULARE, CALIFORNIA, U.S.A.

NOTE: Assessor's Parcel Numbers Shown in Circles (1) (123)
 Assessor's Block Numbers Shown in Ellipses

UPDATE WHITNEY AVE. 10/20/2008	MLC
REVISION	DATE TECH