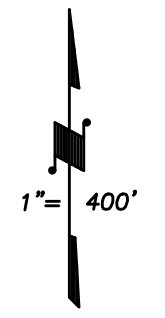
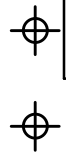
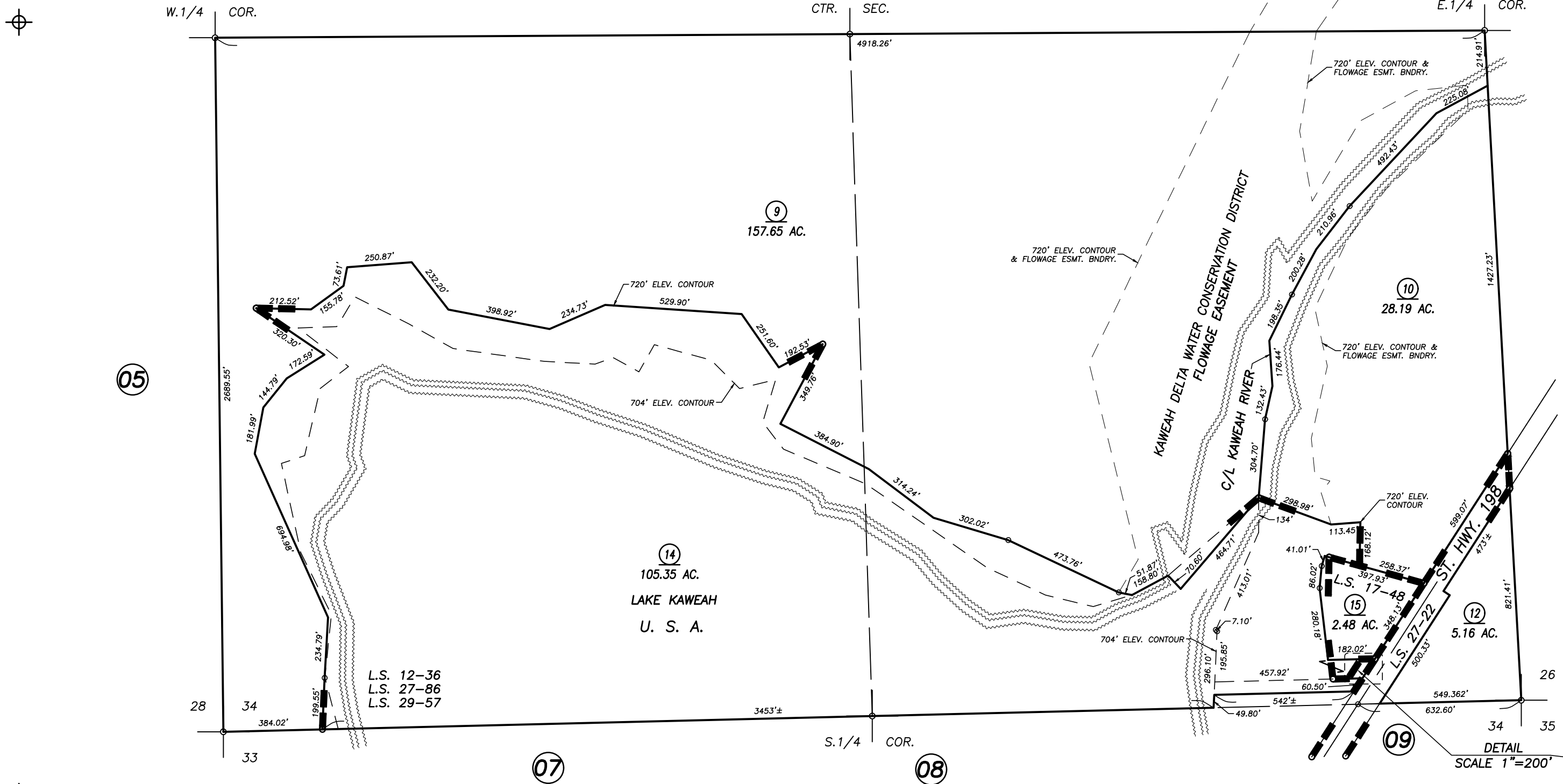


147-002  
161-011  
146-009

**DISCLAIMER**  
THIS MAP WAS PREPARED FOR LOCAL PROPERTY ASSESSMENT PURPOSES ONLY AND THE PARCELS SHOWN HEREON MAY NOT COMPLY WITH STATE AND LOCAL SUBDIVISION ORDINANCES, AND NO LIABILITY IS ASSUMED FOR THE USE OF THE INFORMATION SHOWN HEREON. R & T CODE SEC. 327, 408.3, ETC.



BASIS OF BEARINGS:  
L.S. 29-57



Bk. 068

POR. RECORD OF SURVEY, L.S. 12-36 (BOUNDARIES OF TERMINUS DAM)  
RECORD OF SURVEY, L.S. 17-48  
POR. RECORD OF SURVEY, L.S. 27-22 (ST. HWY. 198)  
POR. RECORD OF SURVEY, L.S. 27-86 (BOUNDARIES OF 720 FT. CONTOUR LN.)  
POR. RECORD OF SURVEY, L.S. 29-57 (L.S. 27-86 CORRECTIVE SURVEY)

VICINITY OF THREE RIVERS  
ASSESSOR'S MAPS BK. 066 , PG. 10  
COUNTY OF TULARE, CALIFORNIA, U.S.A.

NOTE: Assessor's Parcel Numbers Shown in Circles ① 123  
Assessor's Block Numbers Shown in Ellipses

2009-0028919	6/26/2018	AL
REVISION	DATE	TECH