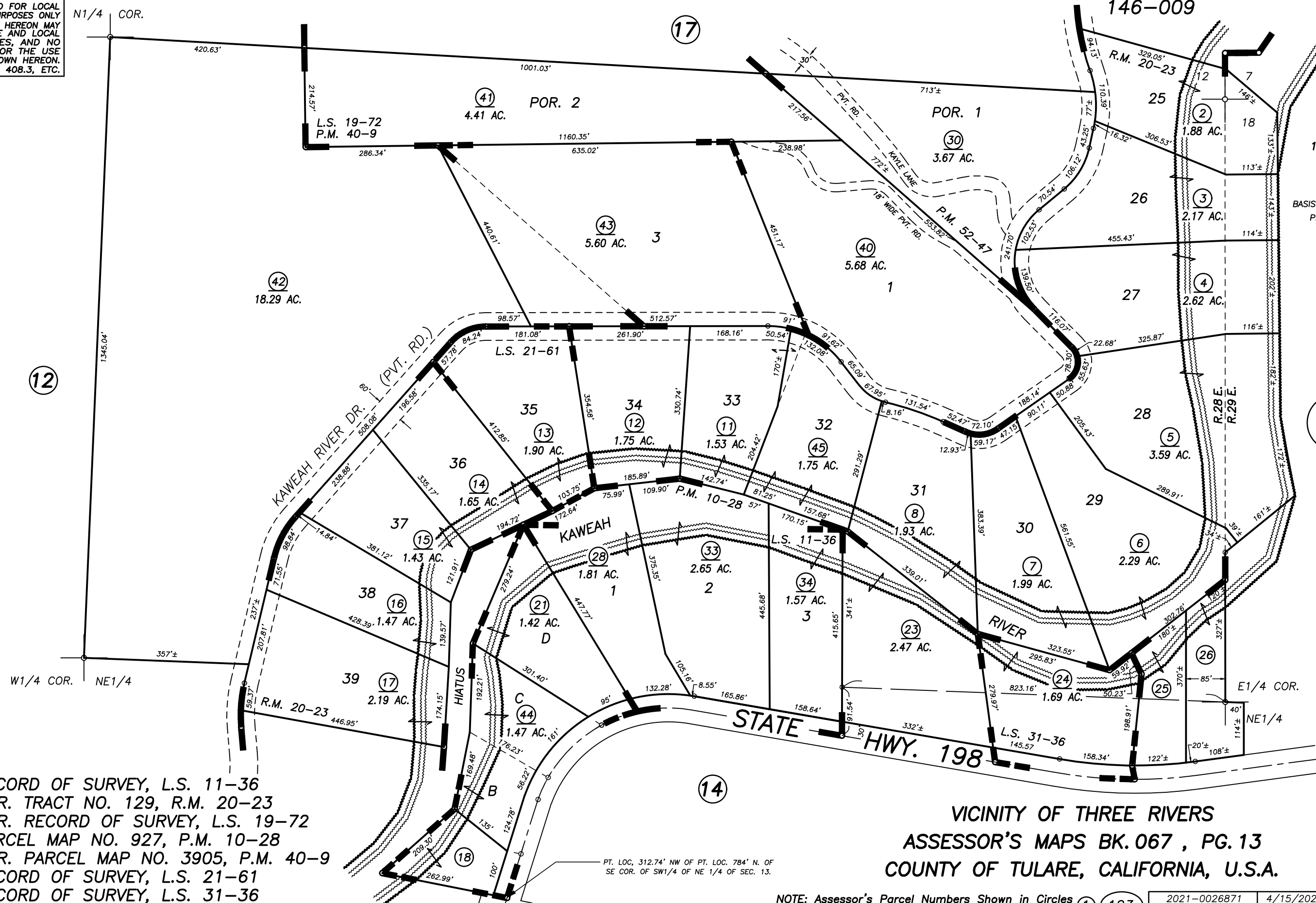
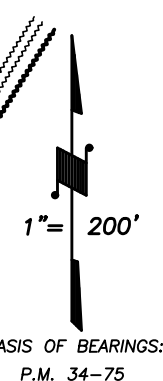


N1/2 OF NE1/4 SEC.13, T.17S., R.28E., M.D.B.&M.

Tax Area Codes 067-13

**DISCLAIMER**  
 THIS MAP WAS PREPARED FOR LOCAL PROPERTY ASSESSMENT PURPOSES ONLY AND THE PARCELS SHOWN HEREON MAY NOT COMPLY WITH STATE AND LOCAL SUBDIVISION ORDINANCES, AND NO LIABILITY IS ASSUMED FOR THE USE OF THE INFORMATION SHOWN HEREON. R & T CODE SEC. 327, 408.3, ETC.



RECORD OF SURVEY, L.S. 11-36  
 POR. TRACT NO. 129, R.M. 20-23  
 POR. RECORD OF SURVEY, L.S. 19-72  
 PARCEL MAP NO. 927, P.M. 10-28  
 POR. PARCEL MAP NO. 3905, P.M. 40-9  
 RECORD OF SURVEY, L.S. 21-61  
 RECORD OF SURVEY, L.S. 31-36  
 POR. PARCEL MAP NO. 5140, 52-47

PT. LOC. 312.74' NW OF PT. LOC. 784' N. OF SE COR. OF SW1/4 OF NE 1/4 OF SEC. 13.

VICINITY OF THREE RIVERS  
 ASSESSOR'S MAPS BK. 067 , PG. 13  
 COUNTY OF TULARE, CALIFORNIA, U.S.A.

NOTE: Assessor's Parcel Numbers Shown in Circles  
 Assessor's Block Numbers Shown in Ellipses

2021-0026871	4/15/2021	NFL
REVISION	DATE	TECH