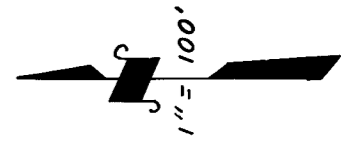


POR. N 1/2 OF SW 1/4 SEC. 7, T.17S., R.29E., M.D.B. & M.

TAX CODE AREA
146-009

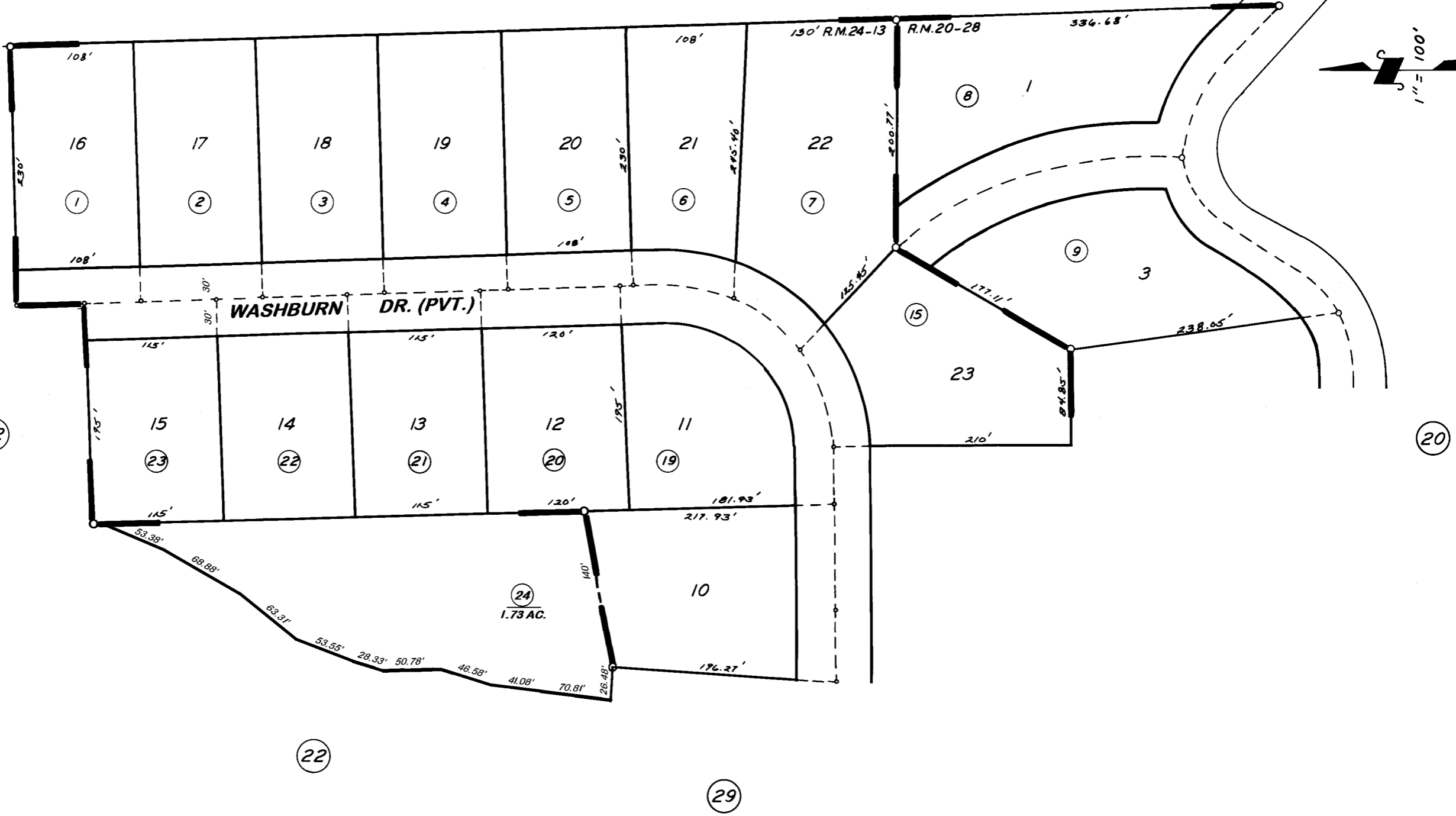
69-28

N88°05'E 1000'
TO CTR. SEC.



DISCLAIMER
THIS MAP WAS PREPARED FOR LOCAL PROPERTY ASSESSMENT PURPOSES ONLY. THE PARCELS SHOWN HEREON MAY NOT COMPLY WITH STATE AND LOCAL SUBDIVISION ORDINANCES. NO LIABILITY IS ASSUMED FOR THE USE OF THE INFORMATION HEREON.

REVISED: 07/18/2012
REASON: 2008-0058821
CAD TECH: JRS



ASSESSOR'S MAPS BK. 69, PG. 28.

COUNTY OF TULARE, CALIF.

POR. TRACT NO. 129
POR. TRACT NO. 403

R.M. 20-23
R.M. 24-13

NOTE — ASSESSOR'S BLOCK NUMBERS SHOWN IN ELLIPSES
ASSESSOR'S PARCEL NUMBERS SHOWN IN CIRCLES

