

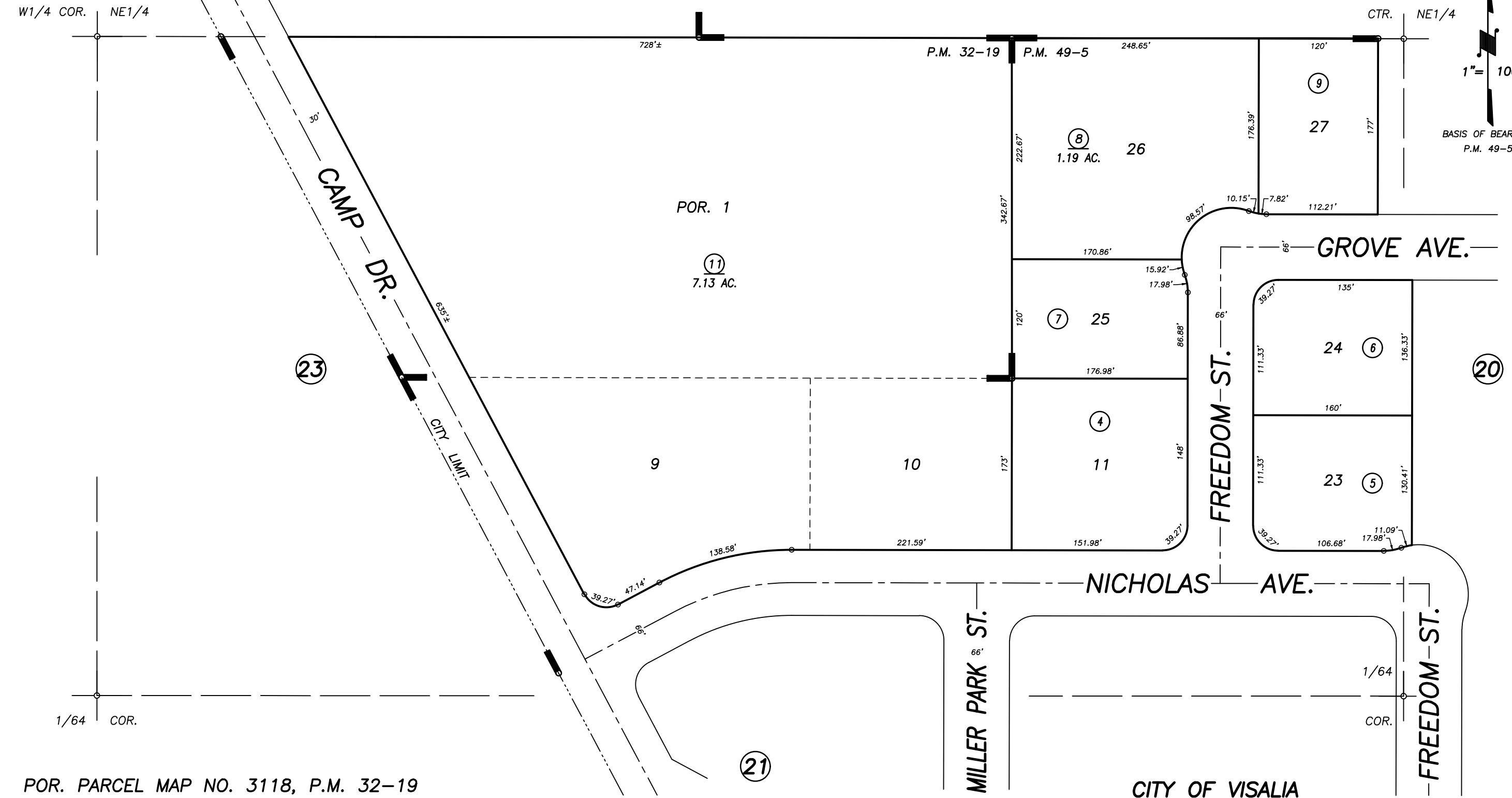
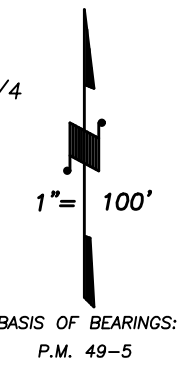
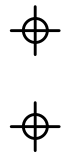
N1/2 OF SW1/4 OF NE1/4 SEC.30, T.18S., R.24E., M.D.B.&M.

Tax Area Codes 073-19

006-015

006-225

DISCLAIMER
 THIS MAP WAS PREPARED FOR LOCAL PROPERTY ASSESSMENT PURPOSES ONLY AND THE PARCELS SHOWN HEREON MAY NOT COMPLY WITH STATE AND LOCAL SUBDIVISION ORDINANCES, AND NO LIABILITY IS ASSUMED FOR THE USE OF THE INFORMATION SHOWN HEREON.



POR. PARCEL MAP NO. 3118, P.M. 32-19
 POR. PARCEL MAP NO. 4800, P.M. 49-5

CITY OF VISALIA
 ASSESSOR'S MAPS BK. 073 , PG. 19
 COUNTY OF TULARE, CALIFORNIA, U.S.A.

NOTE: Assessor's Parcel Numbers Shown in Circles (1) (123)
 Assessor's Block Numbers Shown in Ellipses

| | | |
|---------------|-----------|------|
| ADD ADJ. PAGE | 4/09/2019 | CFG |
| REVISION | DATE | TECH |