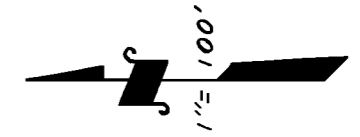


POR. SE1/4 OF NE1/4 SEC.24, T.18S., R.23E., M.D.B.&M.

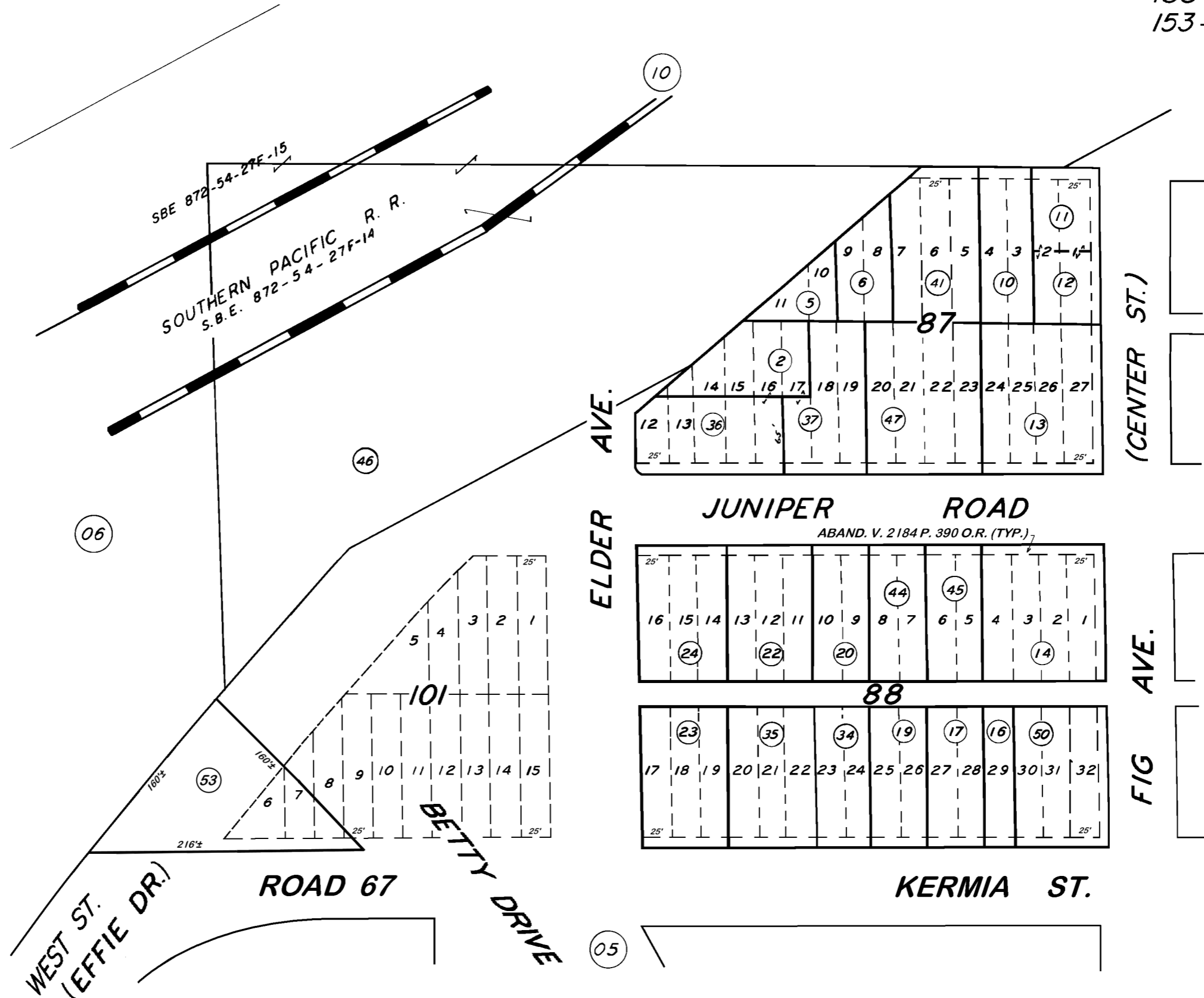
TAX CODE AREA **075 - 07**

153-060
153-049



DISCLAIMER
THIS MAP WAS PREPARED FOR LOCAL PROPERTY ASSESSMENT PURPOSES ONLY. THE PARCELS SHOWN HEREON MAY NOT COMPLY WITH STATE AND LOCAL SUBDIVISION ORDINANCES. NO LIABILITY IS ASSUMED FOR THE USE OF THE INFORMATION HEREON.

REVISED: 10/04/2022
REASON: 2021-0047125
CAD TECH: JOS



POR. GOSHEN TOWNSITE, R.M. 3-19
POR. RECORD OF SURVEY, L.S. 27-25 (RIGGIN AVE., ETC.)

VICINITY OF GOSHEN
ASSESSOR'S MAPS BK. 075, PG. 07.
COUNTY OF TULARE, CALIF.

NOTE — ASSESSOR'S BLOCK NUMBERS SHOWN IN ELLIPSES
ASSESSOR'S PARCEL NUMBERS SHOWN IN CIRCLES

