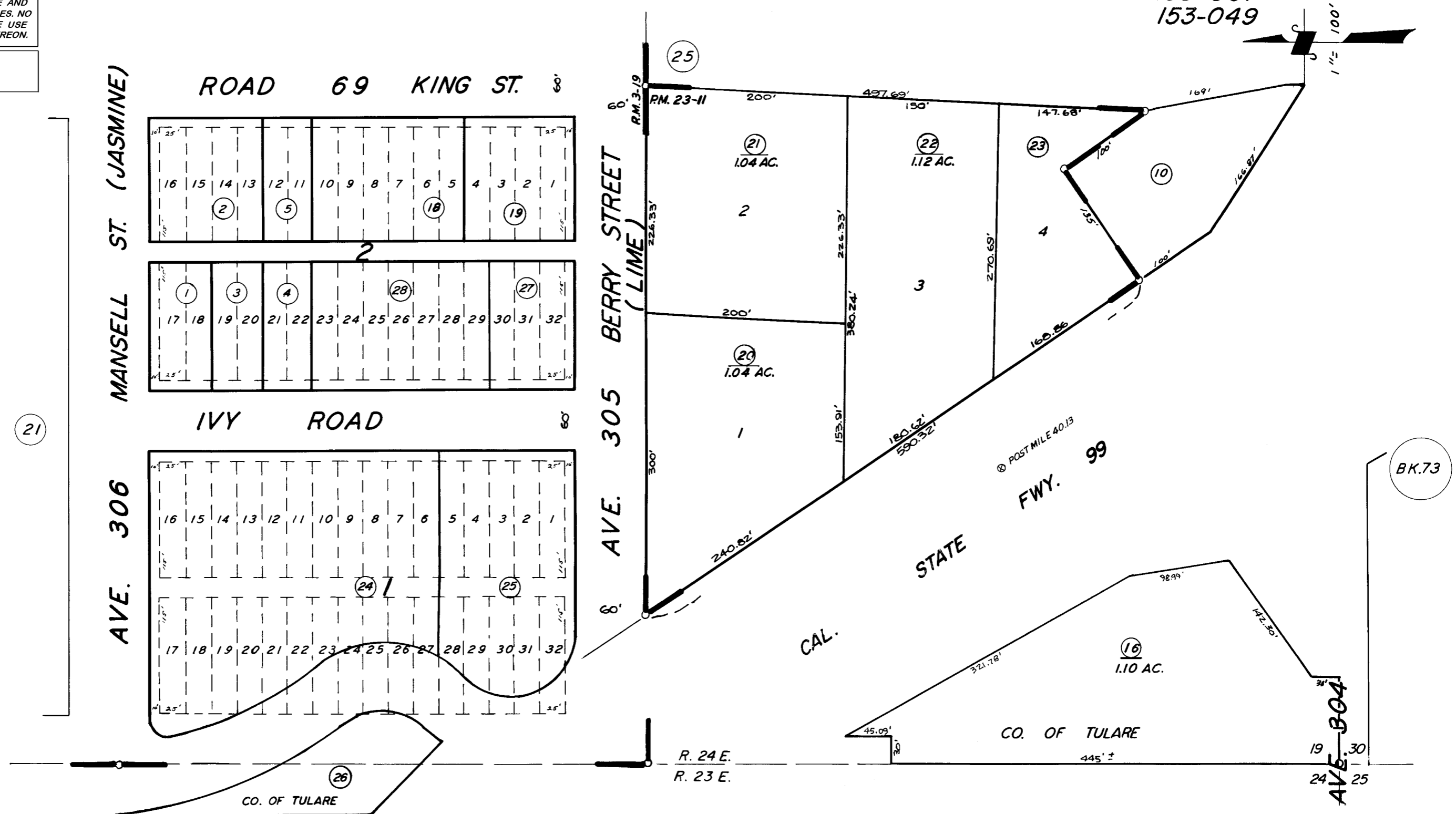


DISCLAIMER
 THIS MAP WAS PREPARED FOR LOCAL PROPERTY ASSESSMENT PURPOSES ONLY. THE PARCELS SHOWN HEREON MAY NOT COMPLY WITH STATE AND LOCAL SUBDIVISION ORDINANCES. NO LIABILITY IS ASSUMED FOR THE USE OF THE INFORMATION HEREON.

REVISED: 07/16/2007
 REASON: ADD L.S. MAP
 CAD TECH: PHN

GOSHEN TOWNSITE, ORIGINAL BLKS. 1 & 2 & POR OF S 1/2 OF SW 1/4 OF SW 1/4 SEC. 19, T.18S., R.24E., M.D.B. & M.

TAX CODE AREA **075-26**
 153-060 153-067
 153-007
 153-049



NOTE: ABANDONMENT REDUCING MOST 80' STREETS TO 60' & 100' STREETS TO 80' RECORDED IN VOL. 2184 PG. 390 OR.

**GOSHEN TOWNSITE, R.M. 3-19
 PARCEL MAP NO. 2210, P.M. 23-11
 POR. RECORD OF SURVEY, L.S. 9-17**

**VICINITY OF GOSHEN
 ASSESSOR'S MAPS BK. 75, PG. 26.
 COUNTY OF TULARE, CALIF.**

NOTE — ASSESSOR'S BLOCK NUMBERS SHOWN IN ELLIPSES
 ASSESSOR'S PARCEL NUMBERS SHOWN IN CIRCLES