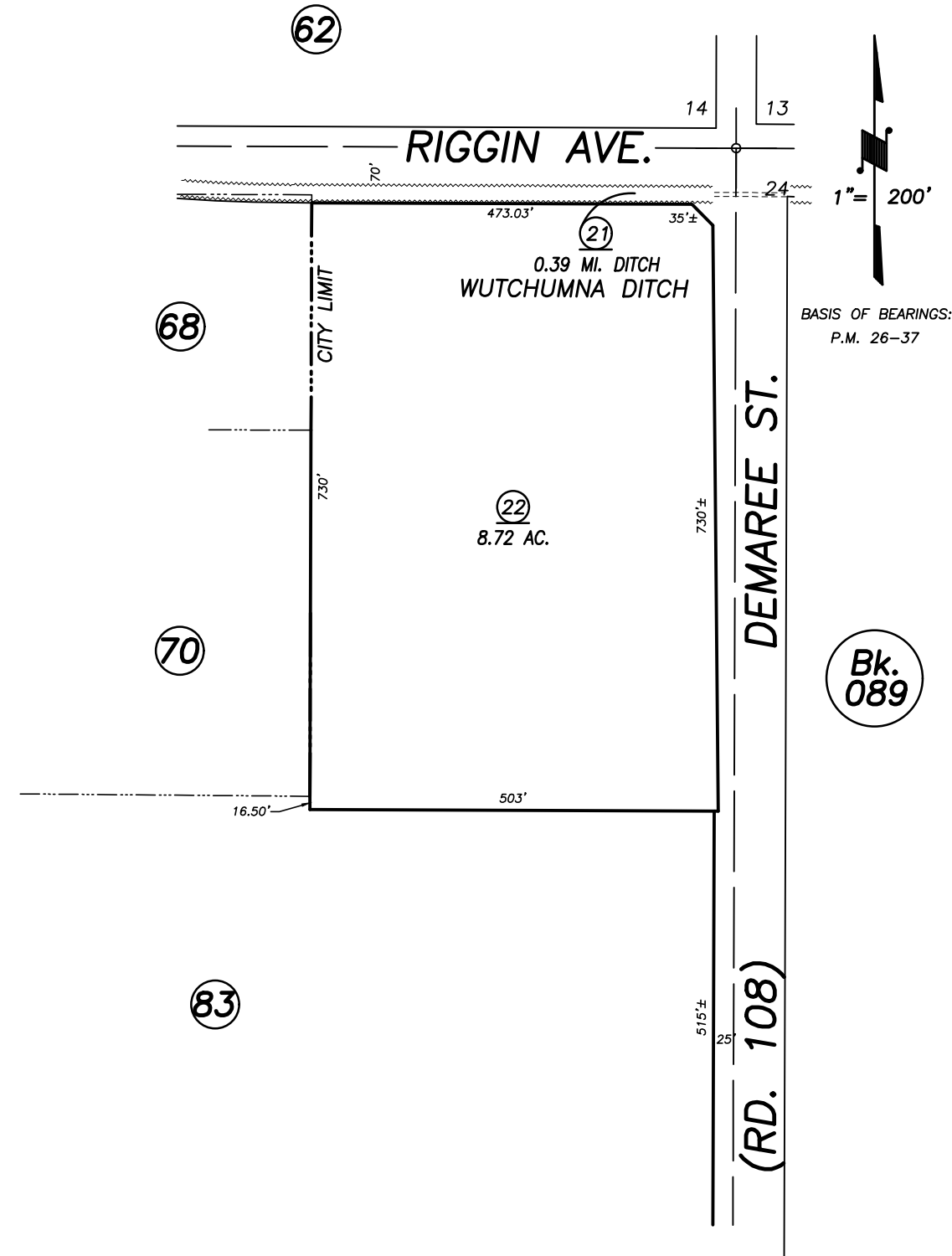
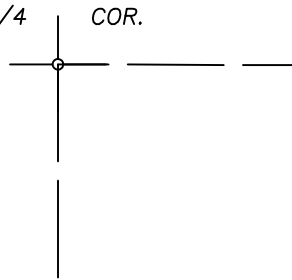


N1/2 OF NE1/4 SEC.23, T.18S., R.24E., M.D.B.&M.

Tax Area Codes 077-18
006-215

DISCLAIMER
THIS MAP WAS PREPARED FOR LOCAL
PROPERTY ASSESSMENT PURPOSES ONLY
AND THE PARCELS SHOWN HEREON MAY
NOT COMPLY WITH STATE AND LOCAL
SUBDIVISION ORDINANCES, AND NO
LIABILITY IS ASSUMED FOR THE USE
OF THE INFORMATION SHOWN HEREON.
R & T CODE SEC. 327, 408.3, ETC.

N.1/4 COR.



BASIS OF BEARINGS:
P.M. 26-37

Bk.
089

CITY OF VISALIA
ASSESSOR'S MAPS BK. 077 , PG. 18
COUNTY OF TULARE, CALIFORNIA, U.S.A.

NOTE: Assessor's Parcel Numbers Shown in Circles (1) (123)
Assessor's Block Numbers Shown in Ellipses

ADJ PAGE UPDATE	09/14/2017	NFL
REVISION	DATE	TECH