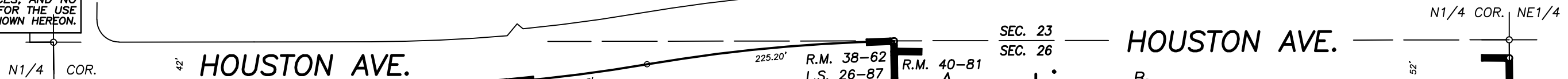


DISCLAIMER

THIS MAP WAS PREPARED FOR LOCAL PROPERTY ASSESSMENT PURPOSES ONLY AND THE PARCELS SHOWN HEREON MAY NOT COMPLY WITH STATE AND LOCAL SUBDIVISION ORDINANCES, AND NO LIABILITY IS ASSUMED FOR THE USE OF THE INFORMATION SHOWN HEREON.

38



N1/4 COR.

HOUSTON AVE.

R.M. 38-62 L.S. 26-87

R.M. 40-81

SEC. 23 SEC. 26

HOUSTON AVE.

N1/4 COR. NE1/4

LINWOOD ST.

CITY OF VISALIA PONDING BASIN

POR. REMAINDER

1 3.90 AC.

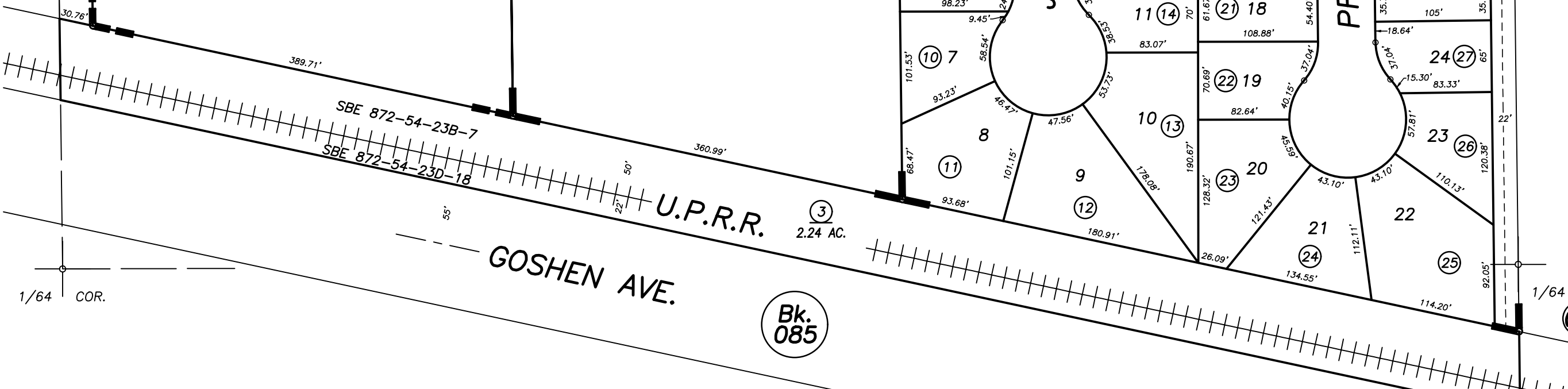
2 4.46 AC.

JULIEANN ST.

CECIL AVE.

CHINOWTH ST.

PRIDE CT.



1/64 COR.

SBE 872-54-23B-7

SBE 872-54-23D-18

U.P.R.R.

GOSHEN AVE.

Bk. 085

3 2.24 AC.

66

09

POR. THE RANCH, UNIT NO. 3, R.M. 38-62 RECORD OF SURVEY, L.S. 26-87 THE RANCH, UNIT NO. 4, R.M. 40-81

CITY OF VISALIA ASSESSOR'S MAPS BK. 077 , PG. 48 COUNTY OF TULARE, CALIFORNIA, U.S.A.

NOTE: Assessor's Parcel Numbers Shown in Circles 1 123 Assessor's Block Numbers Shown in Ellipses

2011-0015012	02/07/2012	JRS
REVISION	DATE	TECH

BASIS OF BEARINGS: R.M. 40-81

1" = 100'