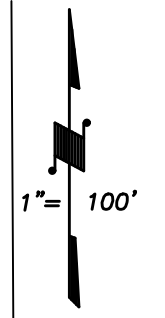


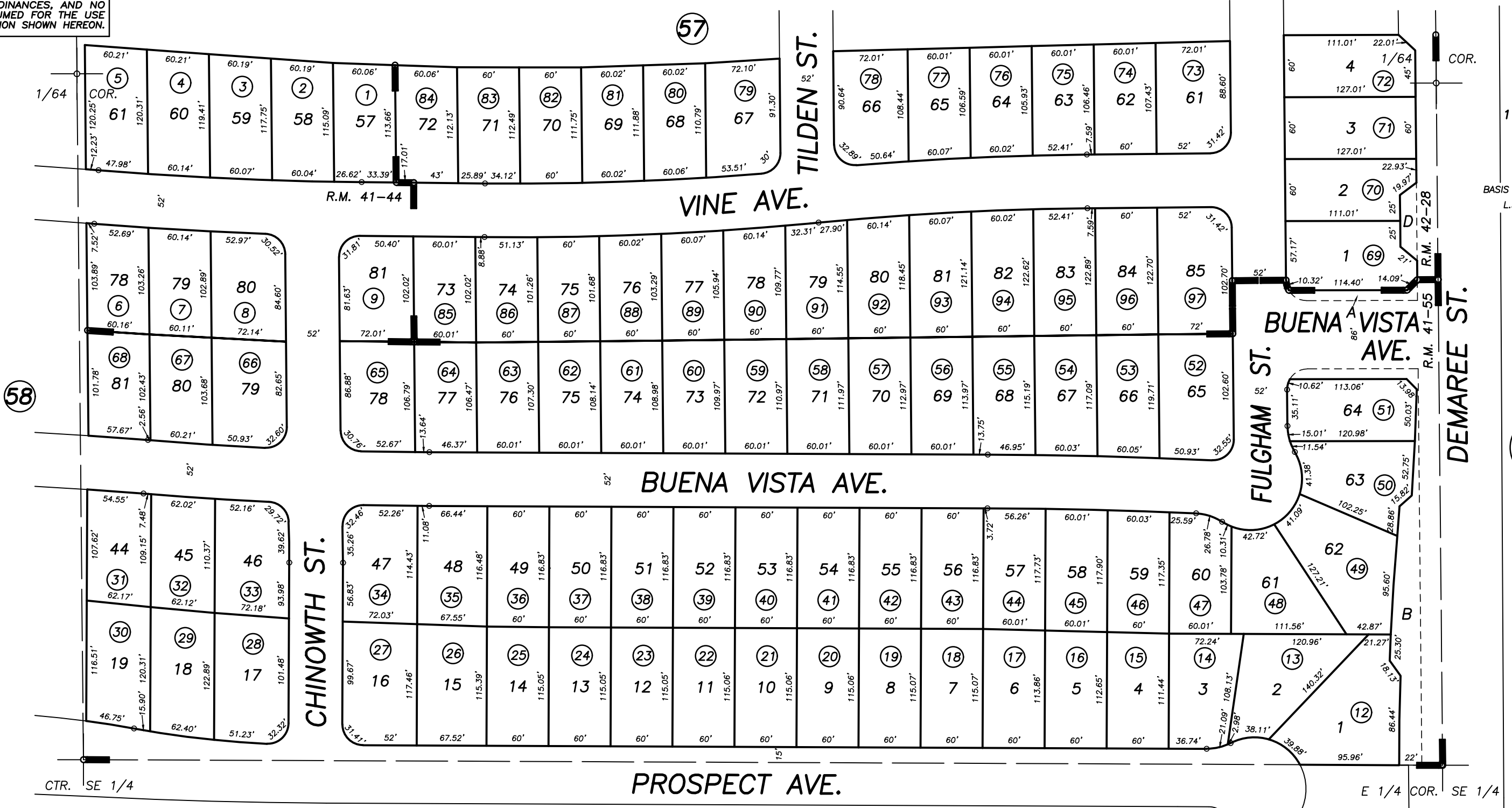
S1/2 OF NE1/4 OF SE1/4 SEC.23, T.18S., R.24E., M.D.B&M

Tax Area Codes 077-59
006-200

DISCLAIMER
THIS MAP WAS PREPARED FOR LOCAL PROPERTY ASSESSMENT PURPOSES ONLY AND THE PARCELS SHOWN HEREON MAY NOT COMPLY WITH STATE AND LOCAL SUBDIVISION ORDINANCES, AND NO LIABILITY IS ASSUMED FOR THE USE OF THE INFORMATION SHOWN HEREON.



BASIS OF BEARINGS:
L.S. 25-54



POR. RECORD OF SURVEY, L.S. 25-54 (N1/2 OF SE1/4)
 POR. SILVER OAKS, UNIT NO. 1, R.M. 41-44
 POR. SILVER OAKS, UNIT NO. 2, R.M. 41-55
 POR. SILVER OAKS, UNIT NO. 3, R.M. 42-28

CITY OF VISALIA
 ASSESSOR'S MAPS BK. 077 , PG. 59
 COUNTY OF TULARE, CALIFORNIA, U.S.A.

NOTE: Assessor's Parcel Numbers Shown in Circles (1) (123)
 Assessor's Block Numbers Shown in Ellipses

2006-0099444	11/09/2006	JRS
REVISION	DATE	TECH