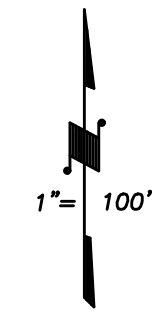
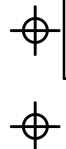
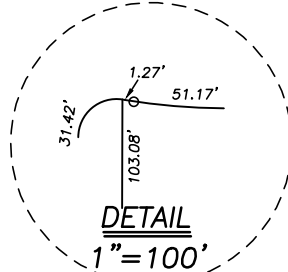
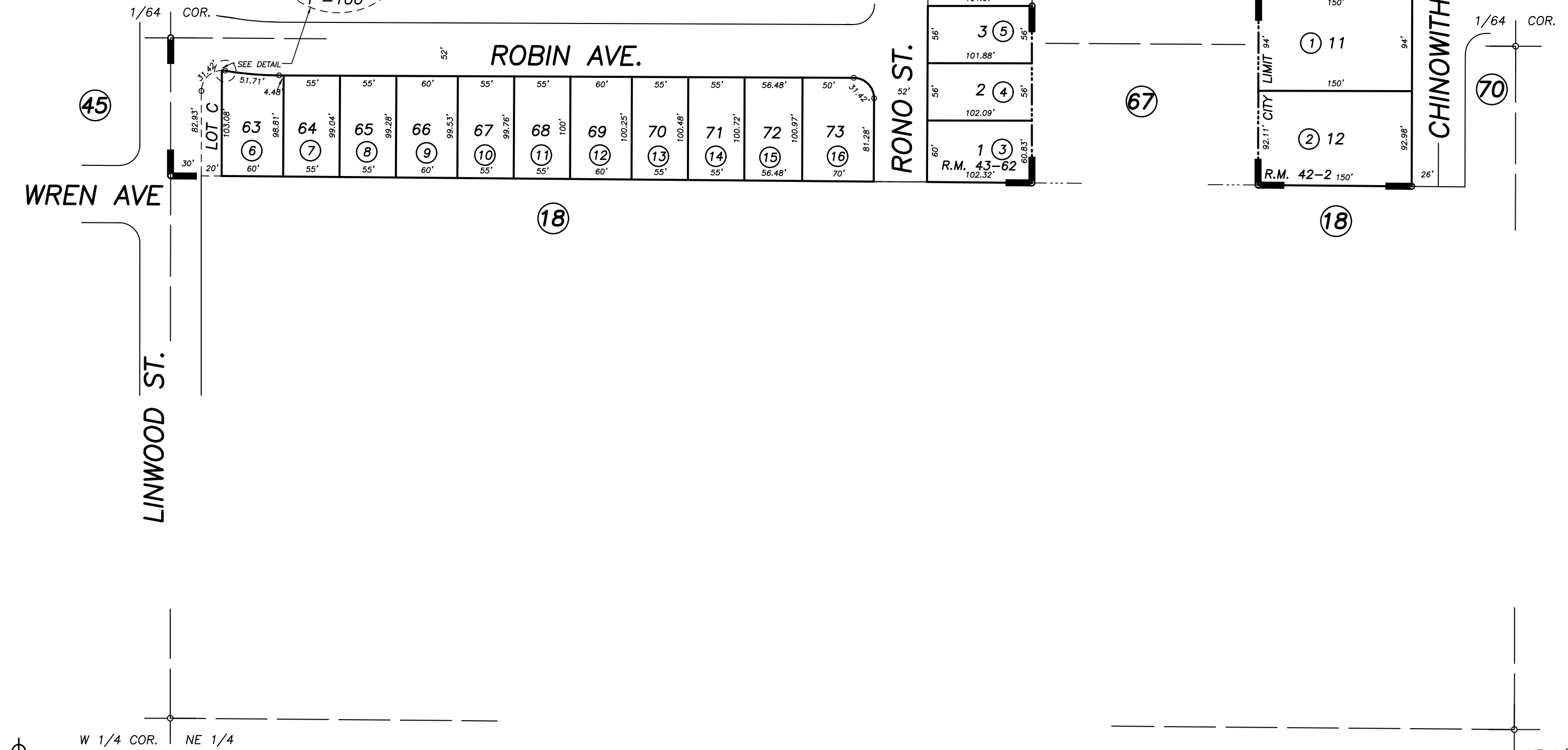


**DISCLAIMER**  
THIS MAP WAS PREPARED FOR LOCAL PROPERTY ASSESSMENT PURPOSES ONLY AND THE PARCELS SHOWN HEREON MAY NOT COMPLY WITH STATE AND LOCAL SUBDIVISION ORDINANCES, AND NO LIABILITY IS ASSUMED FOR THE USE OF THE INFORMATION SHOWN HEREON. R & T CODE SEC. 327, 408.3, ETC.



BASIS OF BEARINGS:  
R.M. 42-2



POR VALLEY PALMS, R.M. 42-2  
 POR TUMBLE ROSE SUBDIVISION, R.M. 43-62

CITY OF VISALIA  
 ASSESSOR'S MAPS BK. 077 , PG. 69  
 COUNTY OF TULARE, CALIFORNIA, U.S.A.

NOTE: Assessor's Parcel Numbers Shown in Circles (1) (123)  
 Assessor's Block Numbers Shown in Ellipses (67) (18) (70)

CITY LIMIT CHANGE	06/02/2017	ASG
REVISION	DATE	TECH