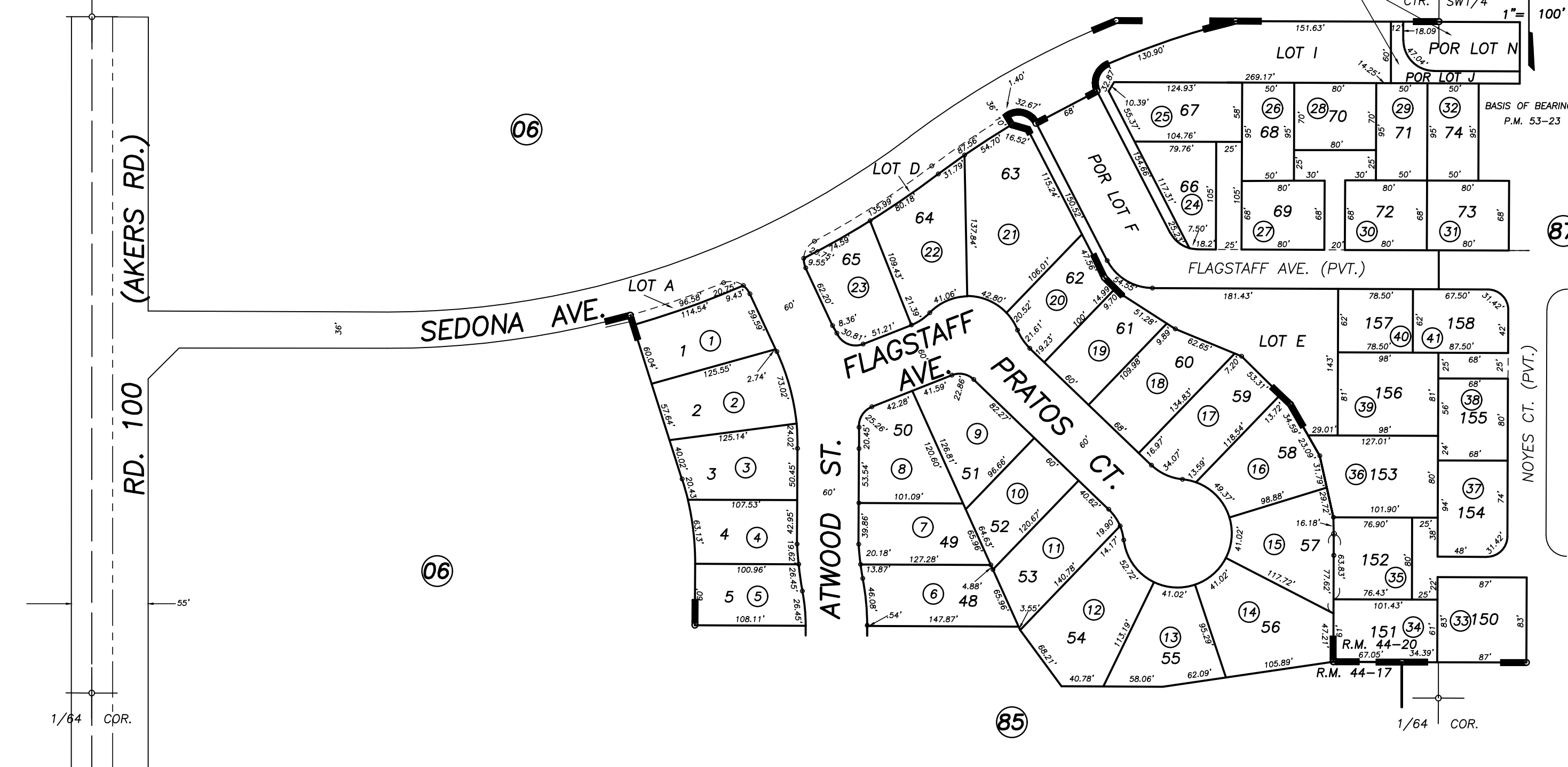


89

**DISCLAIMER**  
THIS MAP WAS PREPARED FOR LOCAL PROPERTY ASSESSMENT PURPOSES ONLY AND THE PARCELS SHOWN HEREON MAY NOT COMPLY WITH STATE AND LOCAL SUBDIVISION ORDINANCES, AND NO LIABILITY IS ASSUMED FOR THE USE OF THE INFORMATION SHOWN HEREON. R & T CODE SEC. 327, 408.3, ETC.

NOTE: LOTS E,F, and I TO BE ASSESSED WITH 077-870-077  
NOTE: LOTS J AND N TO BE ASSESSED WITH 077-870-076

W1/4 COR. SW1/4



POR. LOWERY WEST, PHASE 1A, R.M. 44-17  
POR. LOWERY WEST, PHASE 1B, R.M. 44-20

CITY OF VISALIA  
ASSESSOR'S MAPS BK. 077 , PG. 86  
COUNTY OF TULARE, CALIFORNIA, U.S.A.