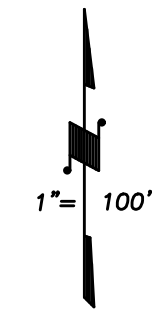
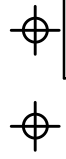
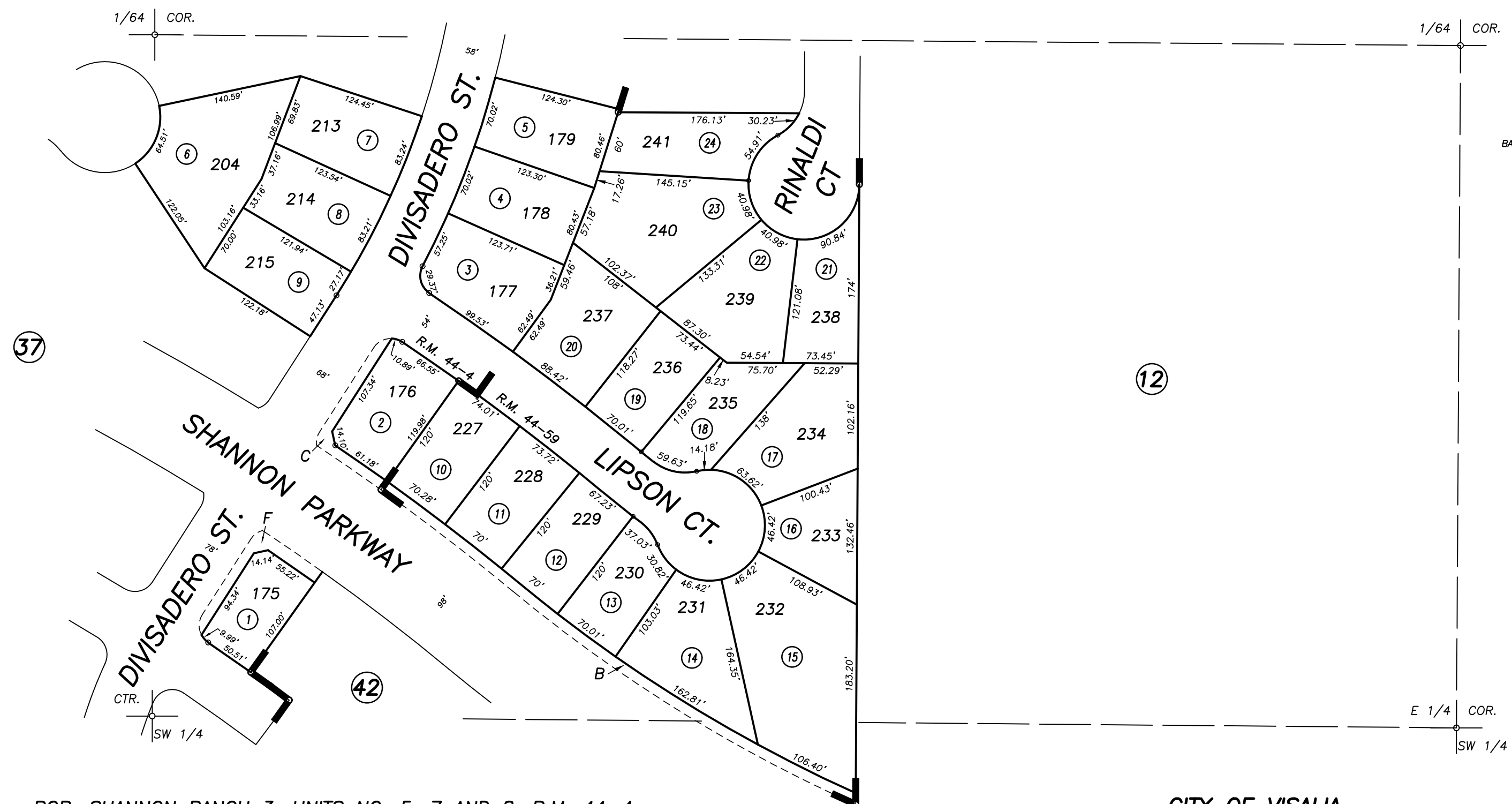


DISCLAIMER
THIS MAP WAS PREPARED FOR LOCAL PROPERTY ASSESSMENT PURPOSES ONLY AND THE PARCELS SHOWN HEREON MAY NOT COMPLY WITH STATE AND LOCAL SUBDIVISION ORDINANCES, AND NO LIABILITY IS ASSUMED FOR THE USE OF THE INFORMATION SHOWN HEREON. R & T CODE SEC. 327, 408.3, ETC.



BASIS OF BEARINGS:
R.M. 44-4



POR. SHANNON RANCH 3, UNITS NO. 5, 7 AND 8, R.M. 44-4
POR. SHANNON RANCH 3, UNITS NO. 9 AND 12, R.M. 44-59

CITY OF VISALIA
ASSESSOR'S MAPS BK. 078 , PG. 41
COUNTY OF TULARE, CALIFORNIA, U.S.A.

NOTE: Assessor's Parcel Numbers Shown in Circles ① 123
Assessor's Block Numbers Shown in Ellipses (37) (40) (12) (42)

2020-0067174	03/10/2021	JOS
REVISION	DATE	TECH