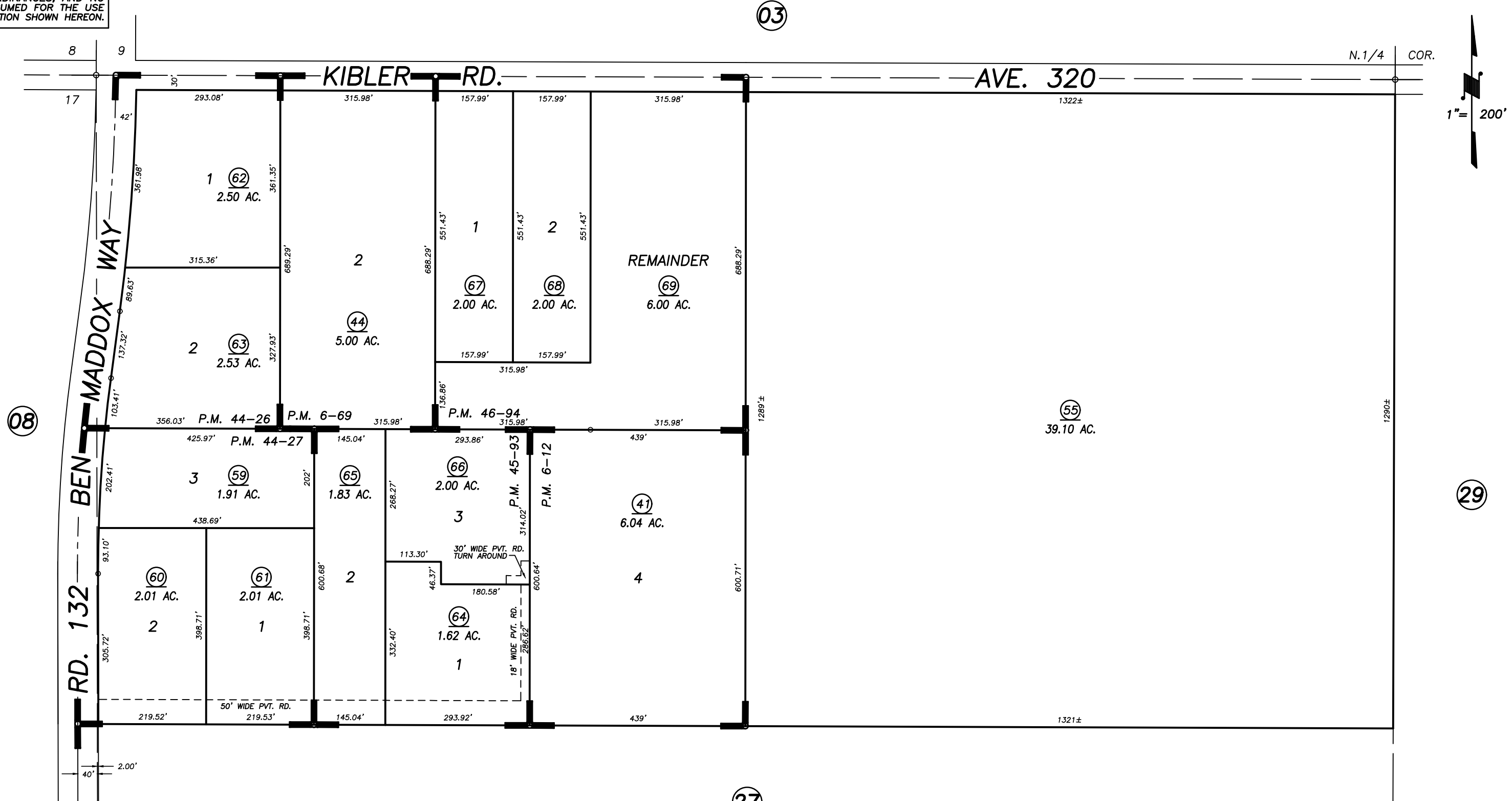


N1/2 OF NW1/4 OF SEC.16, T.18S., R.25E., M.D.B.&M.

Tax Area Codes 079-05
153-046

DISCLAIMER
THIS MAP WAS PREPARED FOR LOCAL PROPERTY ASSESSMENT PURPOSES ONLY AND THE PARCELS SHOWN HEREON MAY NOT COMPLY WITH STATE AND LOCAL SUBDIVISION ORDINANCES, AND NO LIABILITY IS ASSUMED FOR THE USE OF THE INFORMATION SHOWN HEREON.



POR. PARCEL MAP NO. 512, P.M. 6-12
 POR. PARCEL MAP NO, 569, P.M. 6-69
 PARCEL MAP NO. 4322, P.M. 44-26
 PARCEL MAP NO. 4323, P.M. 44-27
 POR. RECORD OF SURVEY, L.S. 20-17 (SEC,16. ETC.)
 PARCEL MAP NO. 4488, P.M. 45-93
 PARCEL MAP NO. 4589, P.M. 46-94

VICINITY OF VISALIA
 ASSESSOR'S MAPS BK. 079 , PG.05
 COUNTY OF TULARE, STATE OF CALIFORNIA, U.S.A.

NOTE: Assessor's Parcel Numbers Shown in Circles (1) (123)
 Assessor's Block Numbers Shown in Elipses

2003-00125281	12/04/2006	KMS
REVISION	DATE	TECH