

04

CYPRESS

AVE.

34

35

KENT ST.

AVE.

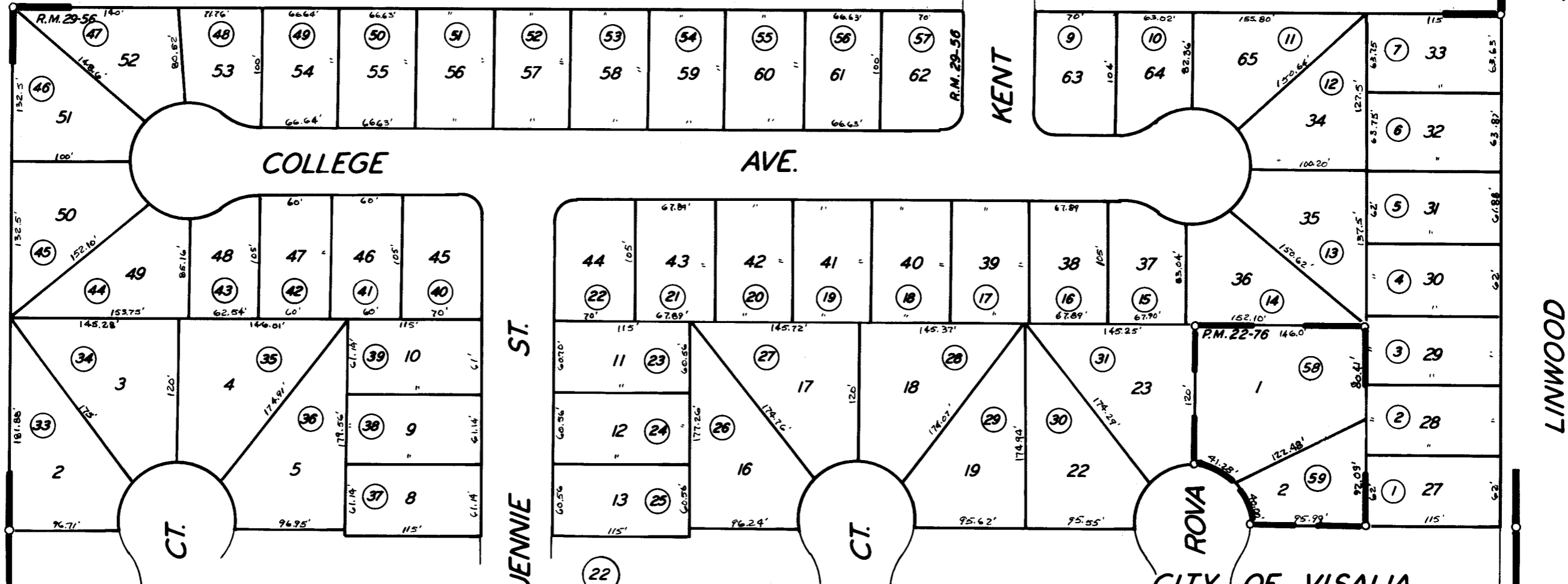
1" = 100'

29

COLLEGE

AVE.

27



POR. GRANADA WEST UNIT NO. 1, R.M. 29-56
PARCEL MAP 2175, P.M. 22-76

CITY OF VISALIA
ASSESSOR'S MAPS BK. 87 PG. 26
COUNTY OF TULARE, CALIF.

NOTE— ASSESSOR'S BLOCK NUMBERS SHOWN IN ELIPSES
ASSESSOR'S PARCEL NUMBERS SHOWN IN CIRCLES