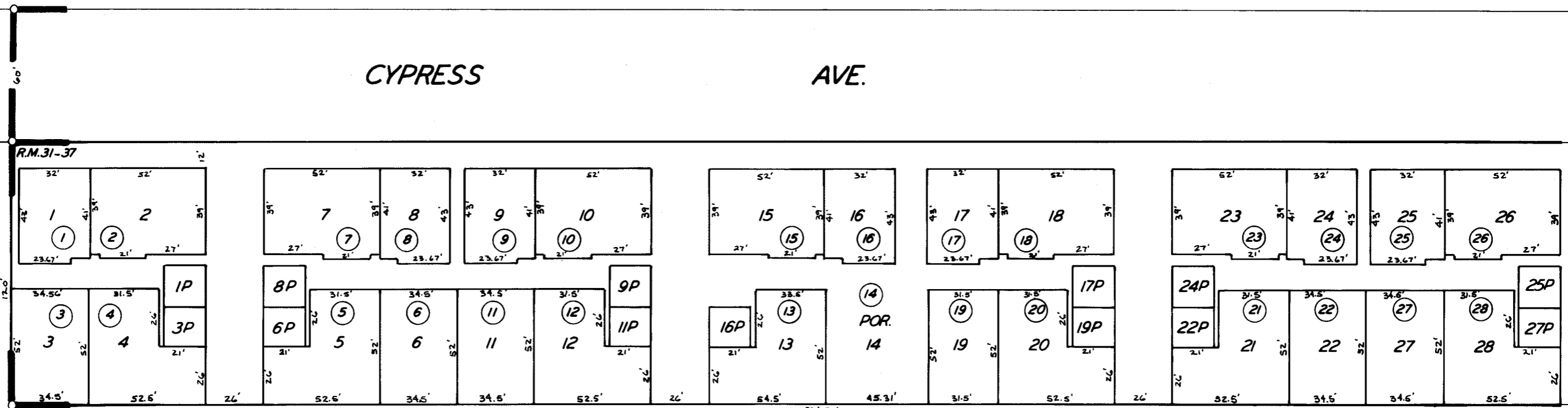


04

CYPRESS AVE.



29

35

26

POR. GRANADA GARDENS R.M. 31-37

CITY OF VISALIA
ASSESSOR'S MAPS BK. 87 PG. 34
COUNTY OF TULARE, CALIF.

NOTE-ASSESSOR'S BLOCK NUMBERS SHOWN IN ELLIPSES
ASSESSOR'S PARCEL NUMBERS SHOWN IN CIRCLES