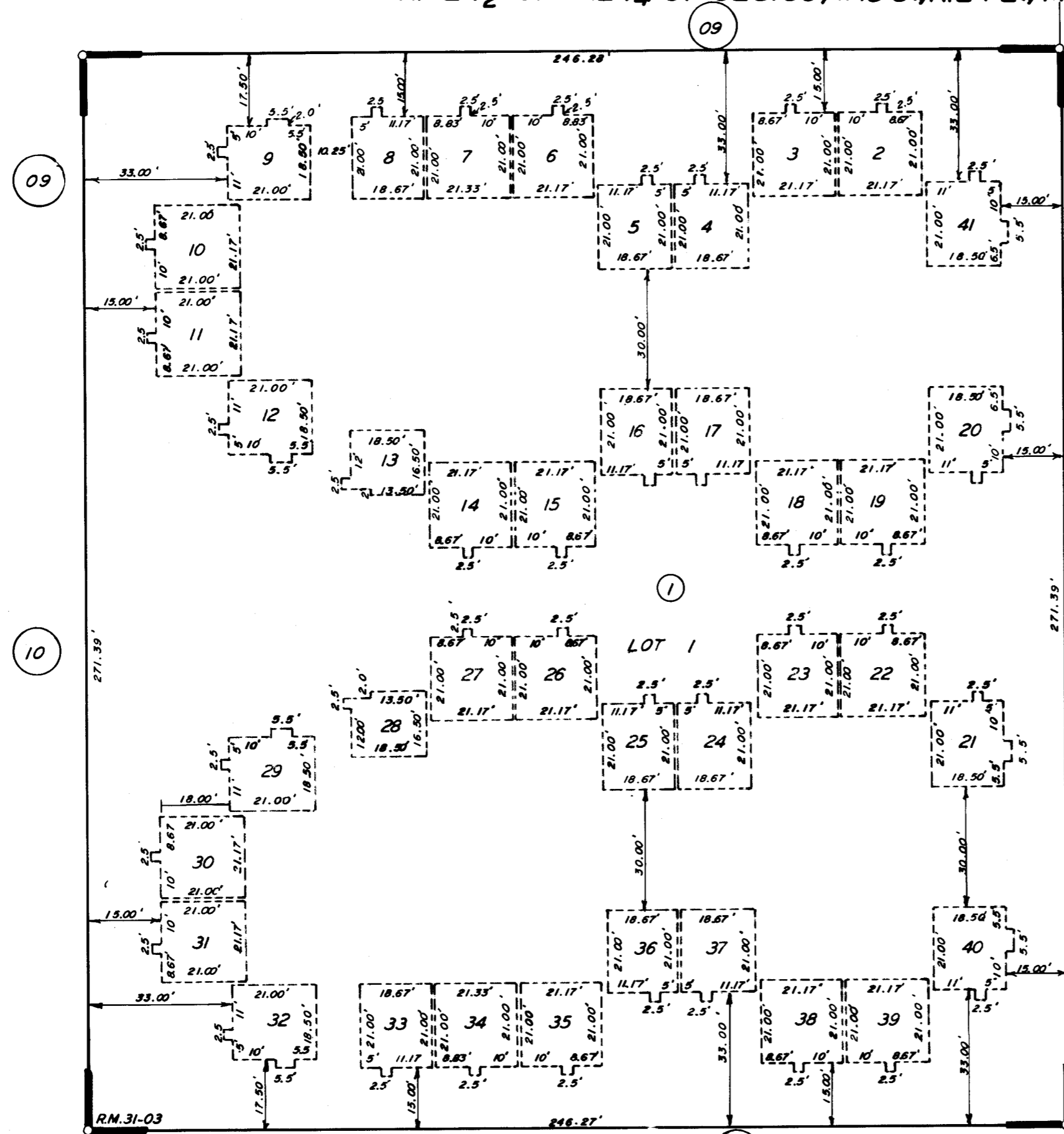


POR. E 1/2 OF NE 1/4 OF SEC. 35, T. 18 S., R. 24 E., M. D. B. & M.

TAX CODE AREA
6-000
6-003

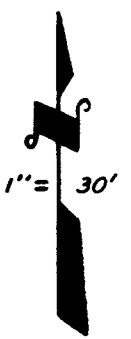
87-43



RD.

DEMAREE

BK. 95



R.M. 31-03

VILLA SEQUOIA CONDOMINIUMS , R.M. 31-03

CITY OF VISALIA
ASSESSOR'S MAPS BK. 87 PG. 43
COUNTY OF TULARE, CALIF.

NOTE-ASSESSOR'S BLOCK NUMBERS SHOWN IN ELLIPSES
ASSESSOR'S PARCEL NUMBERS SHOWN IN CIRCLES