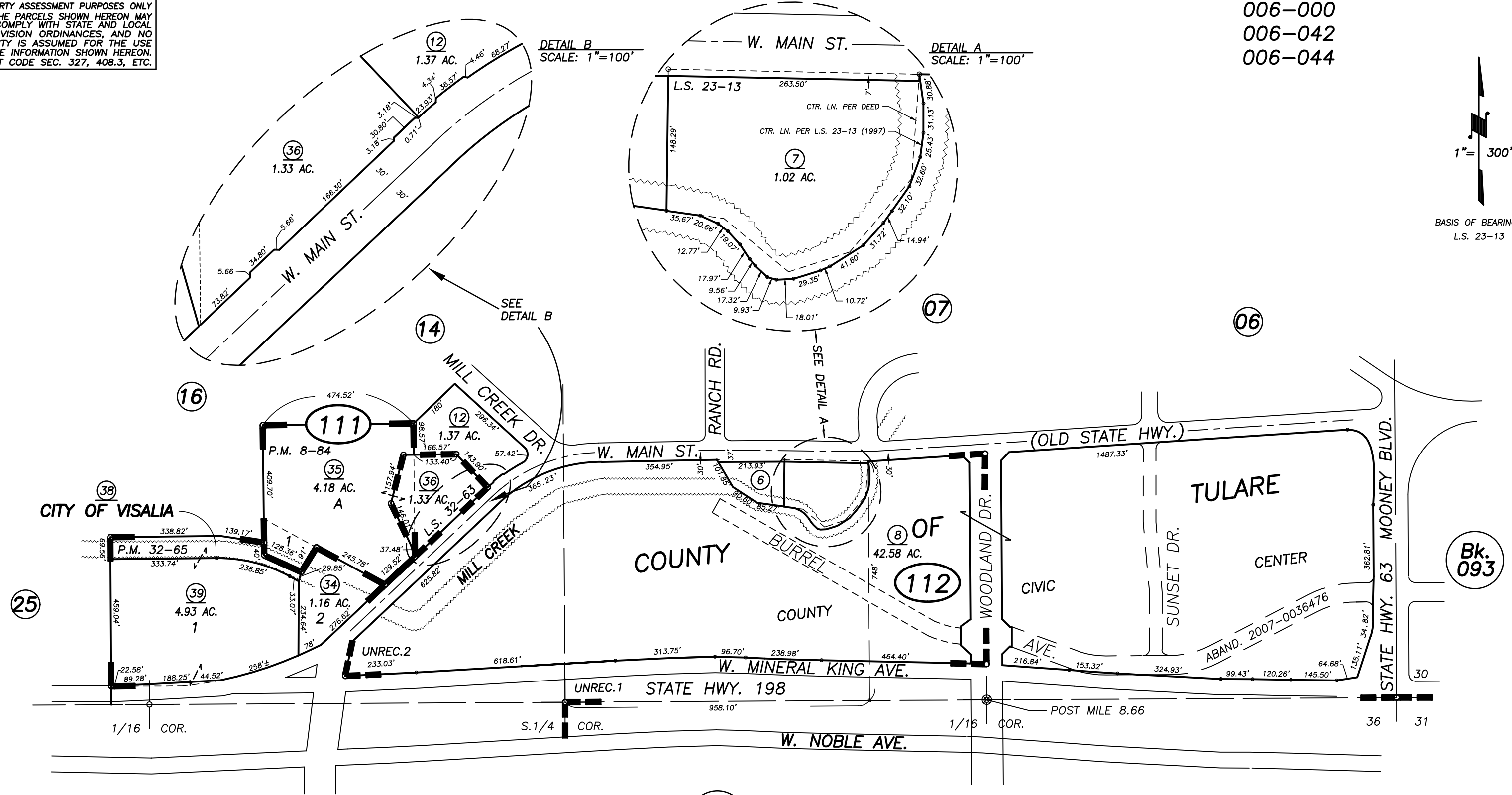
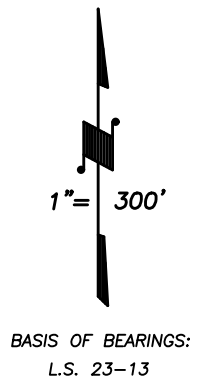


**DISCLAIMER**  
 THIS MAP WAS PREPARED FOR LOCAL PROPERTY ASSESSMENT PURPOSES ONLY AND THE PARCELS SHOWN HEREON MAY NOT COMPLY WITH STATE AND LOCAL SUBDIVISION ORDINANCES, AND NO LIABILITY IS ASSUMED FOR THE USE OF THE INFORMATION SHOWN HEREON. R & T CODE SEC. 327, 408.3, ETC.

POR. S 1/2 SEC. 25, T.18 S., R.24 E., M.D.B.& M.

Tax Area Code  
 006-000  
 006-042  
 006-044

089-11



DETAIL B  
 SCALE: 1"=100'

DETAIL A  
 SCALE: 1"=100'

Bk. 095

Bk. 093

PARCEL MAP 784, P.M. 8-84  
 PARCEL MAP 3164, P.M. 32-65  
 POR. RECORD OF SURVEY, L.S. 19-24 (CTR. LN. HWY. 198)  
 RECORD OF SURVEY, L.S. 23-13  
 POR. HYDE RANCH SURVEY, UNREC.1  
 COUNTY OF TULARE SURVEY, UNREC.2  
 RECORD OF SURVEY, L.S. 32-63

CITY OF VISALIA  
 ASSESSOR'S MAPS BK. 089 , PG. 11  
 COUNTY OF TULARE, CALIFORNIA, U.S.A.

NOTE: Assessor's Parcel Numbers Shown in Circles (1) (123)  
 Assessor's Block Numbers Shown in Elipses

2017-0001391	1/11/2019	JMM
REVISION	DATE	TECH