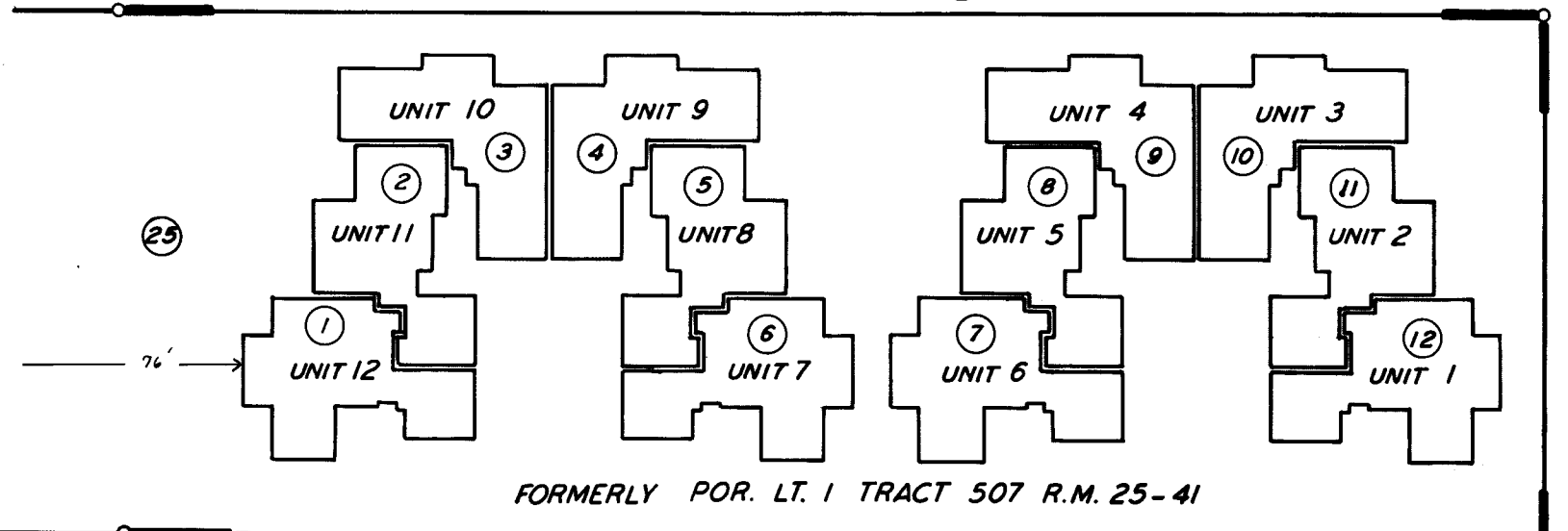


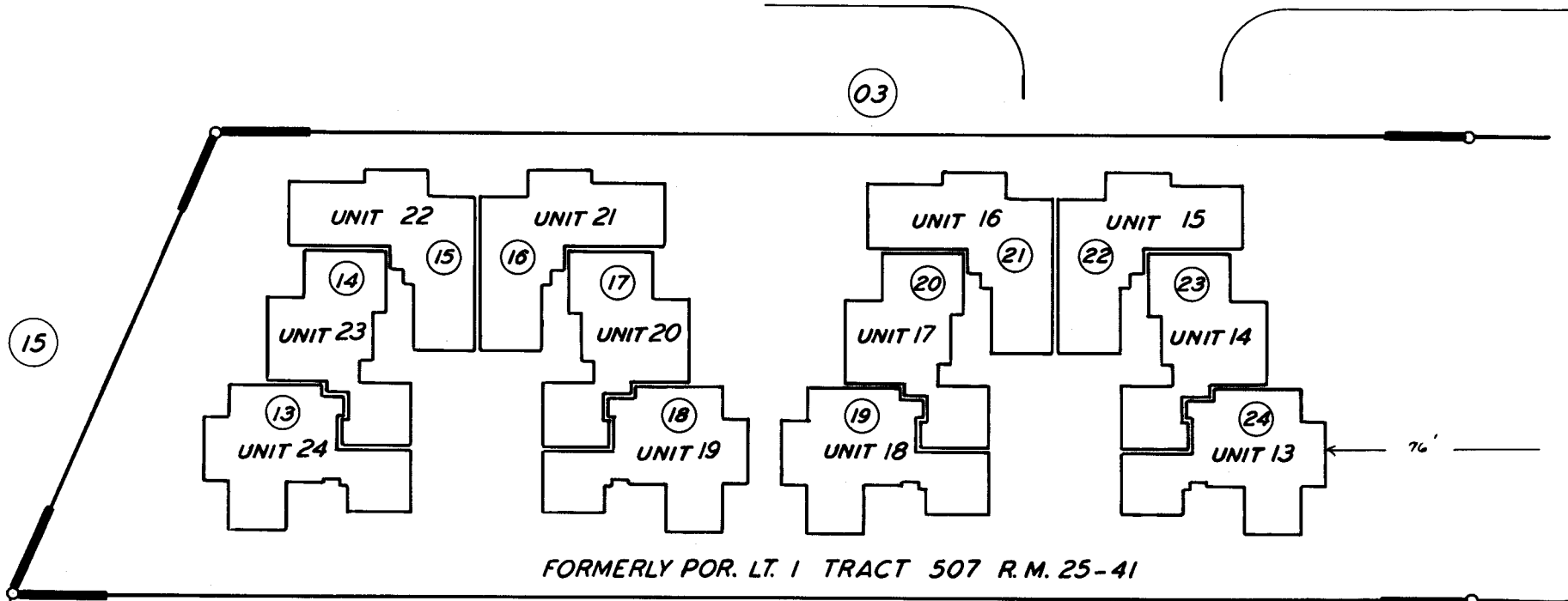
03



ALL OF LT. 1 (COMMON AREA)
ASSESSED WITH A.P.N. 089-200-25

FORMERLY POR. LT. 1 TRACT 507 R.M. 25-41

BORDER LINKS ROAD



NOTE: UNITS SHOWN DEFINE A SUBDIVISION OF
AIR SPACE. AREAS SHOWN DELINEATE THE
AREA TO THE INTERIOR SURFACES OF THE
WALLS.

FORMERLY POR. LT. 1 TRACT 507 R.M. 25-41

BORDER LINKS ROAD

VISALIA COUNTRY CLUB CONDOMINIUM R.M. 26-53

ASSESSOR'S MAPS BK. 89, PG. 20
COUNTY OF TULARE, CALIF.

NOTE-ASSESSOR'S BLOCK NUMBERS SHOWN IN ELIPSES
ASSESSOR'S PARCEL NUMBERS SHOWN IN CIRCLES