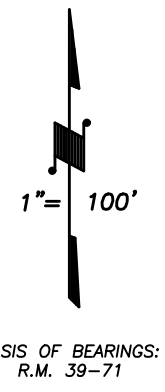
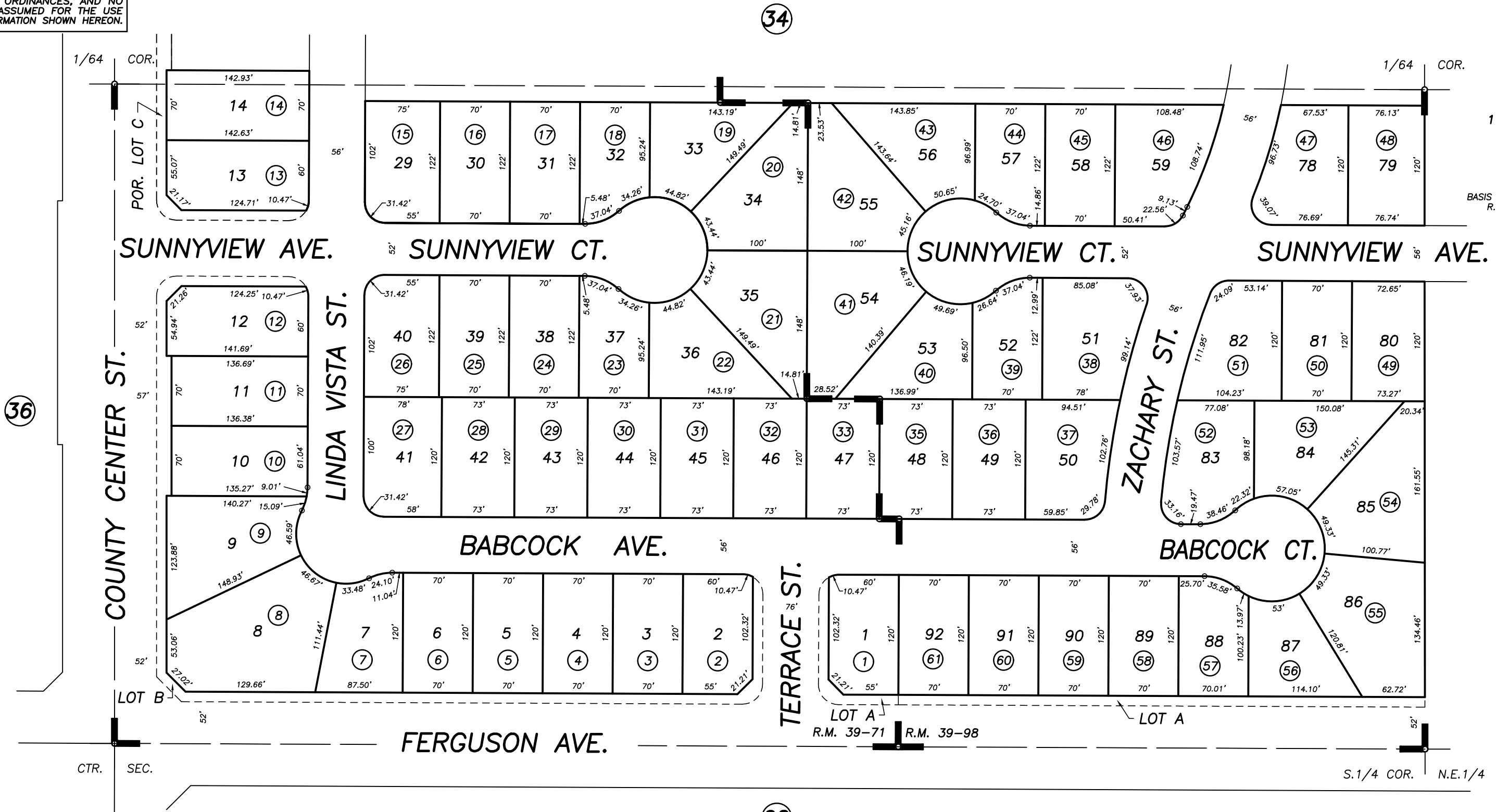


DISCLAIMER
 THIS MAP WAS PREPARED FOR LOCAL PROPERTY ASSESSMENT PURPOSES ONLY AND THE PARCELS SHOWN HEREON MAY NOT COMPLY WITH STATE AND LOCAL SUBDIVISION ORDINANCES, AND NO LIABILITY IS ASSUMED FOR THE USE OF THE INFORMATION SHOWN HEREON.

S1/2 OF SW1/4 OF NE1/4 SEC.24, T.18S., R.24E., M.D.B.&M.

Tax Area Codes **089-35**
 006-215



POR. THE OAKS, UNIT NO. 5, R.M. 39-71
 POR. THE OAKS, UNIT NO. 6, R.M. 39-98

CITY OF VISALIA
 ASSESSOR'S MAPS BK. 089 , PG. 35
 COUNTY OF TULARE, STATE OF CALIFORNIA, U.S.A.

NOTE: Assessor's Parcel Numbers Shown in Circles (1) (123)
 Assessor's Block Numbers Shown in Ellipses

UPDATE ADJ. PAGE	12/01/2006	MLC
REVISION	DATE	TECH