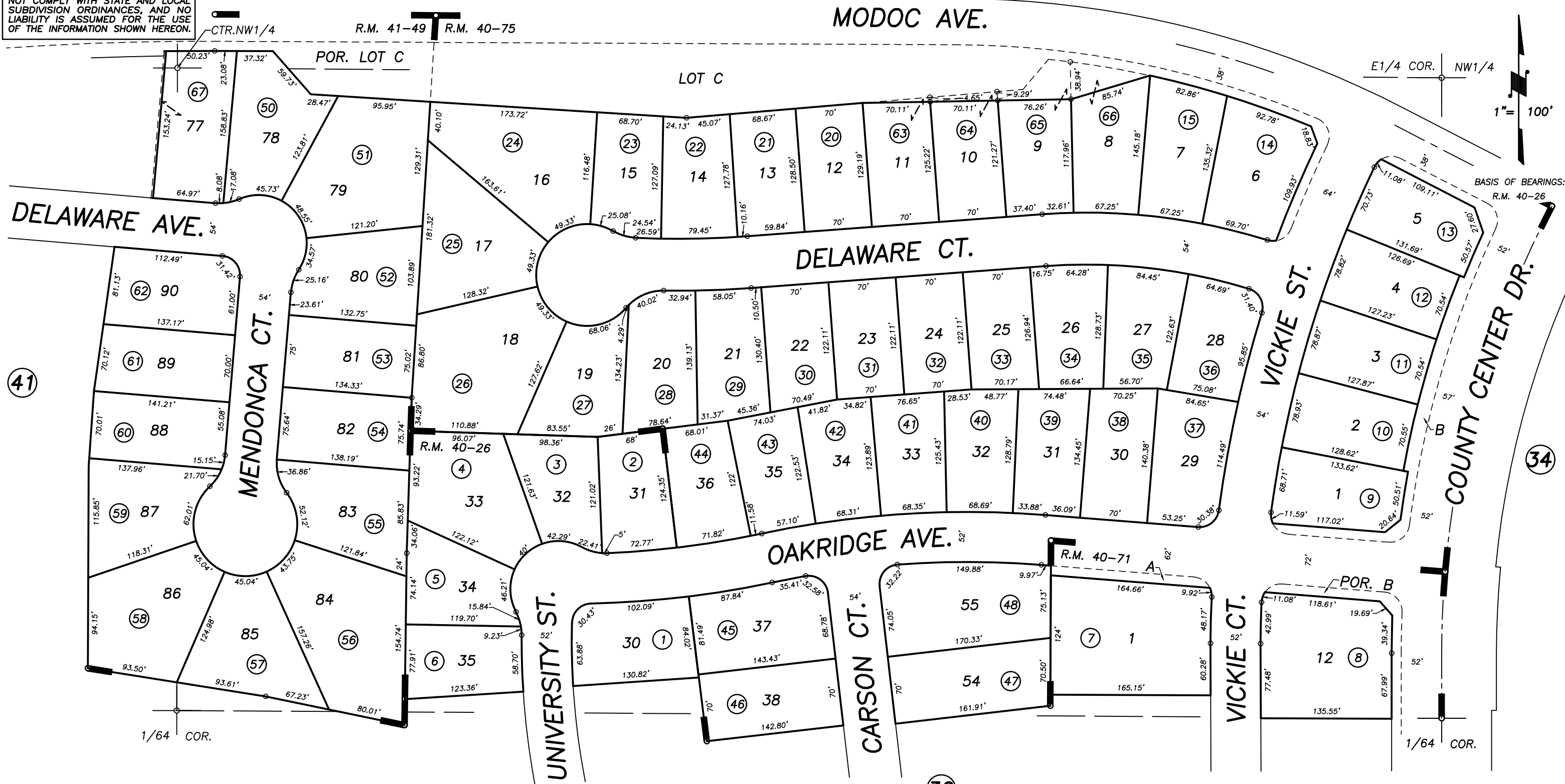


DISCLAIMER
THIS MAP WAS PREPARED FOR LOCAL PROPERTY ASSESSMENT PURPOSES ONLY AND THE PARCELS SHOWN HEREON MAY NOT COMPLY WITH STATE AND LOCAL SUBDIVISION ORDINANCES, AND NO LIABILITY IS ASSUMED FOR THE USE OF THE INFORMATION SHOWN HEREON.



POR. ASHLEY GROVE, UNIT NO. 1, R.M. 40-26
 POR. ASHLEY GROVE, UNIT NO. 4, R.M. 40-71
 POR. ASHLEY GROVE, UNIT NO. 3, R.M. 40-75
 POR. ASHLEY GROVE, UNIT NO. 5 & 6, R.M. 41-49

CITY OF VISALIA
 ASSESSOR'S MAPS BK. 089, PG. 38
 COUNTY OF TULARE, CALIFORNIA, U.S.A.

NOTE: Assessor's Parcel Numbers Shown in Circles (1) (123)
 Assessor's Block Numbers Shown in Ellipses

MAP UPDATE	10/23/2020	CFG
REVISION	DATE	TECH