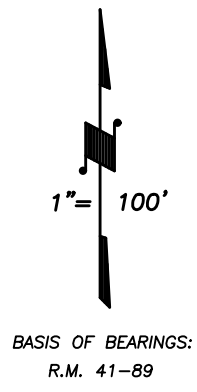
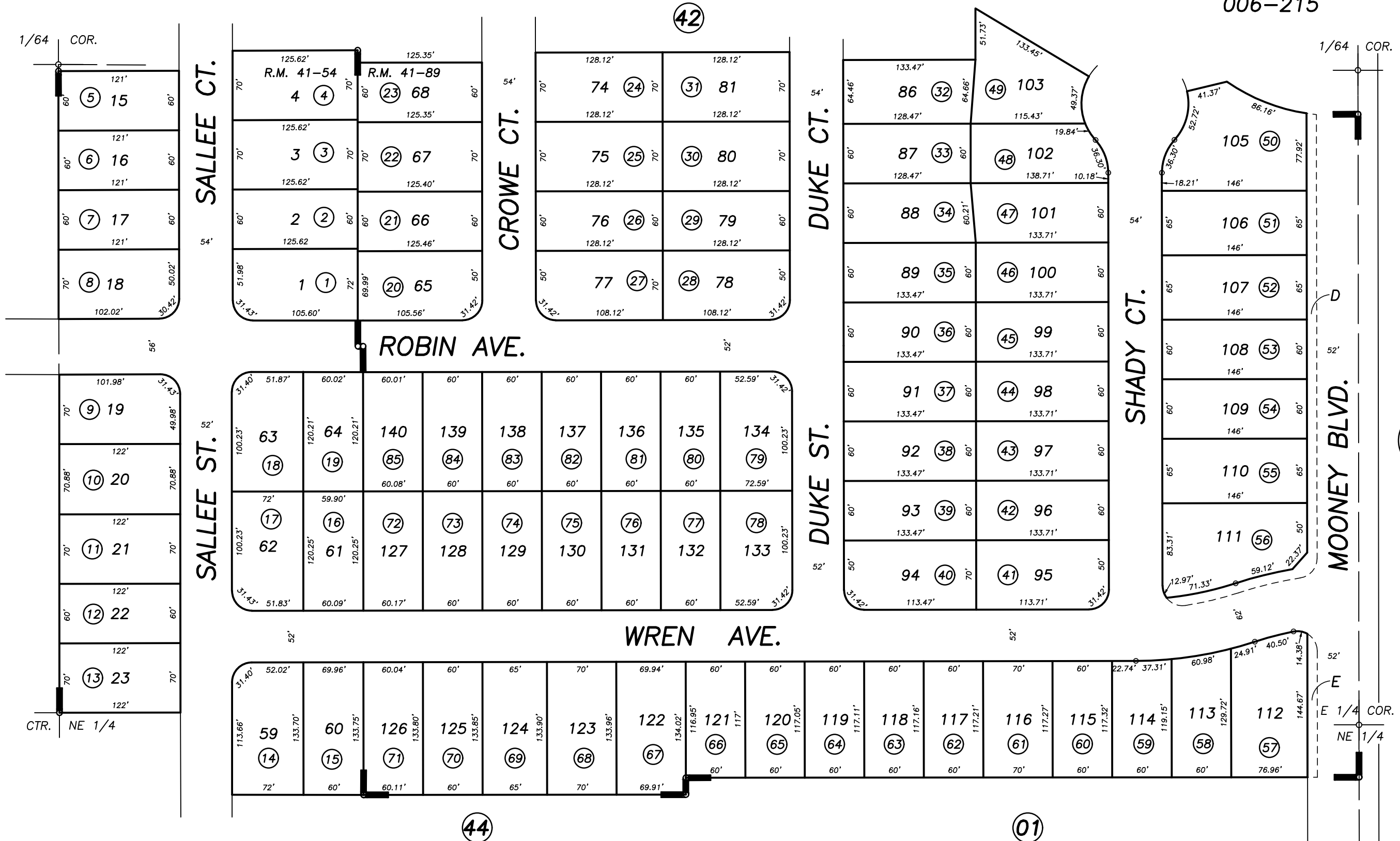


S1/2 OF NE1/4 OF NE1/4 SEC.24, T.18S., R.24E., M.D.B.&M.

Tax Area Codes 089-43  
006-215

**DISCLAIMER**  
THIS MAP WAS PREPARED FOR LOCAL PROPERTY ASSESSMENT PURPOSES ONLY AND THE PARCELS SHOWN HEREON MAY NOT COMPLY WITH STATE AND LOCAL SUBDIVISION ORDINANCES, AND NO LIABILITY IS ASSUMED FOR THE USE OF THE INFORMATION SHOWN HEREON.



POR. ASHLEY GROVE, UNIT NO. 10, R.M. 41-54  
POR. ASHLEY GROVE, UNIT NO. 11, R.M. 41-89

CITY OF VISALIA  
ASSESSOR'S MAPS BK. 089 , PG. 43  
COUNTY OF TULARE, CALIFORNIA, U.S.A.