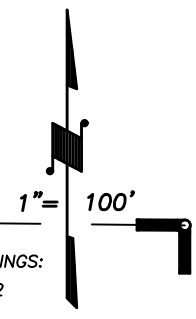


DISCLAIMER
 THIS MAP WAS PREPARED FOR LOCAL PROPERTY ASSESSMENT PURPOSES ONLY AND THE PARCELS SHOWN HEREON MAY NOT COMPLY WITH STATE AND LOCAL SUBDIVISION ORDINANCES, AND NO LIABILITY IS ASSUMED FOR THE USE OF THE INFORMATION SHOWN HEREON.

N1/2 OF NW1/4 OF NW1/4 SEC.24, T.18S., R.24E., M.D.B.&M.

Tax Area Codes **089-53**
 006-215

BK. 078



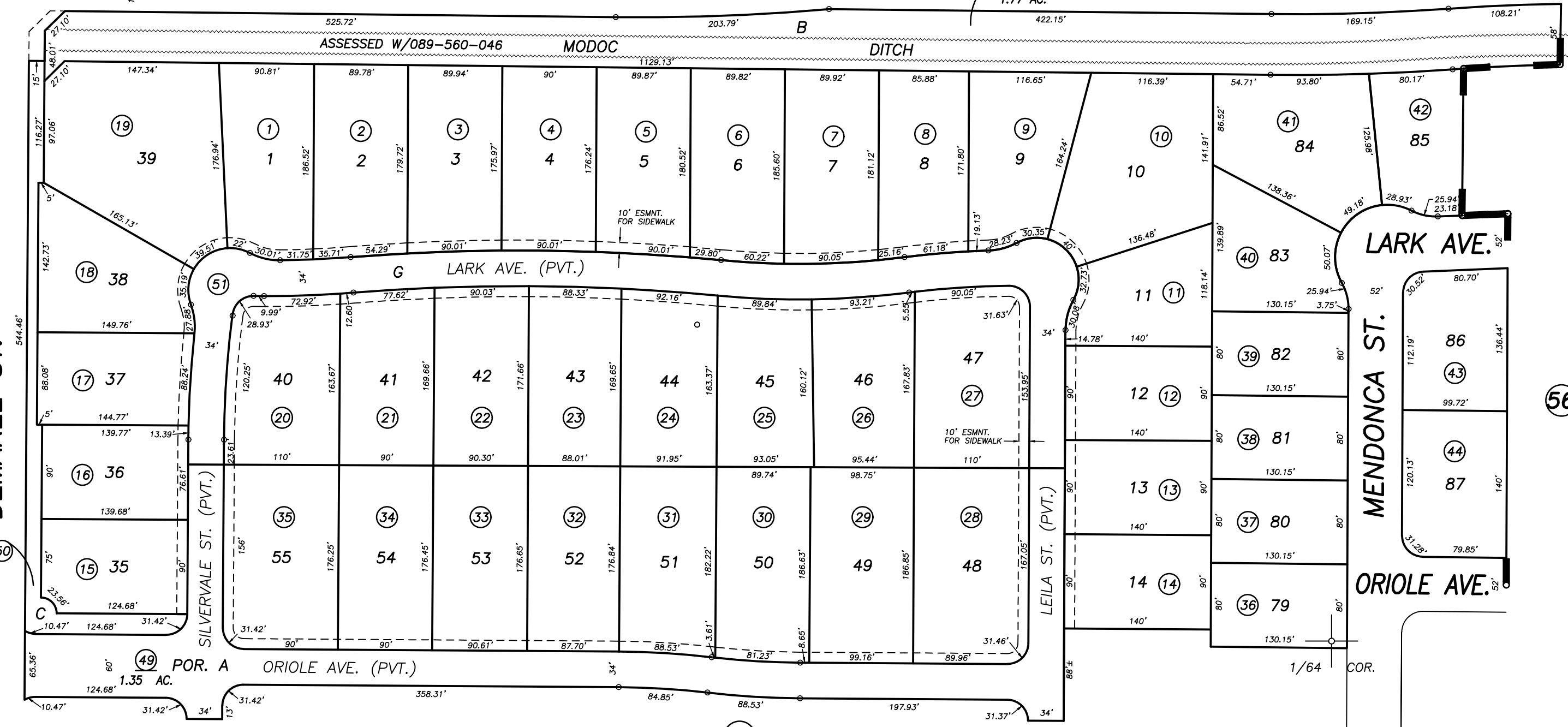
14 13

R.M. 42-34

RIGGIN AVE.

N1/4 COR. NW1/4

BASIS OF BEARINGS:
 R.M. 41-82



BK. 077

BK. 076

BK. 079

POR. AMENDED STERLING OAKS, UNIT NO. 1, R.M. 42-34

CITY OF VISALIA

ASSESSOR'S MAPS BK. 089 , PG. 53
 COUNTY OF TULARE, CALIFORNIA, U.S.A.

NOTE: Assessor's Parcel Numbers Shown in Circles (1) (123)
 Assessor's Block Numbers Shown in Ellipses (1) (123)

2020-1 REVIEW	5/19/2020	CFG
REVISION	DATE	TECH