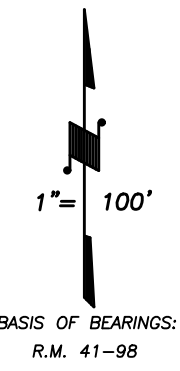


DISCLAIMER

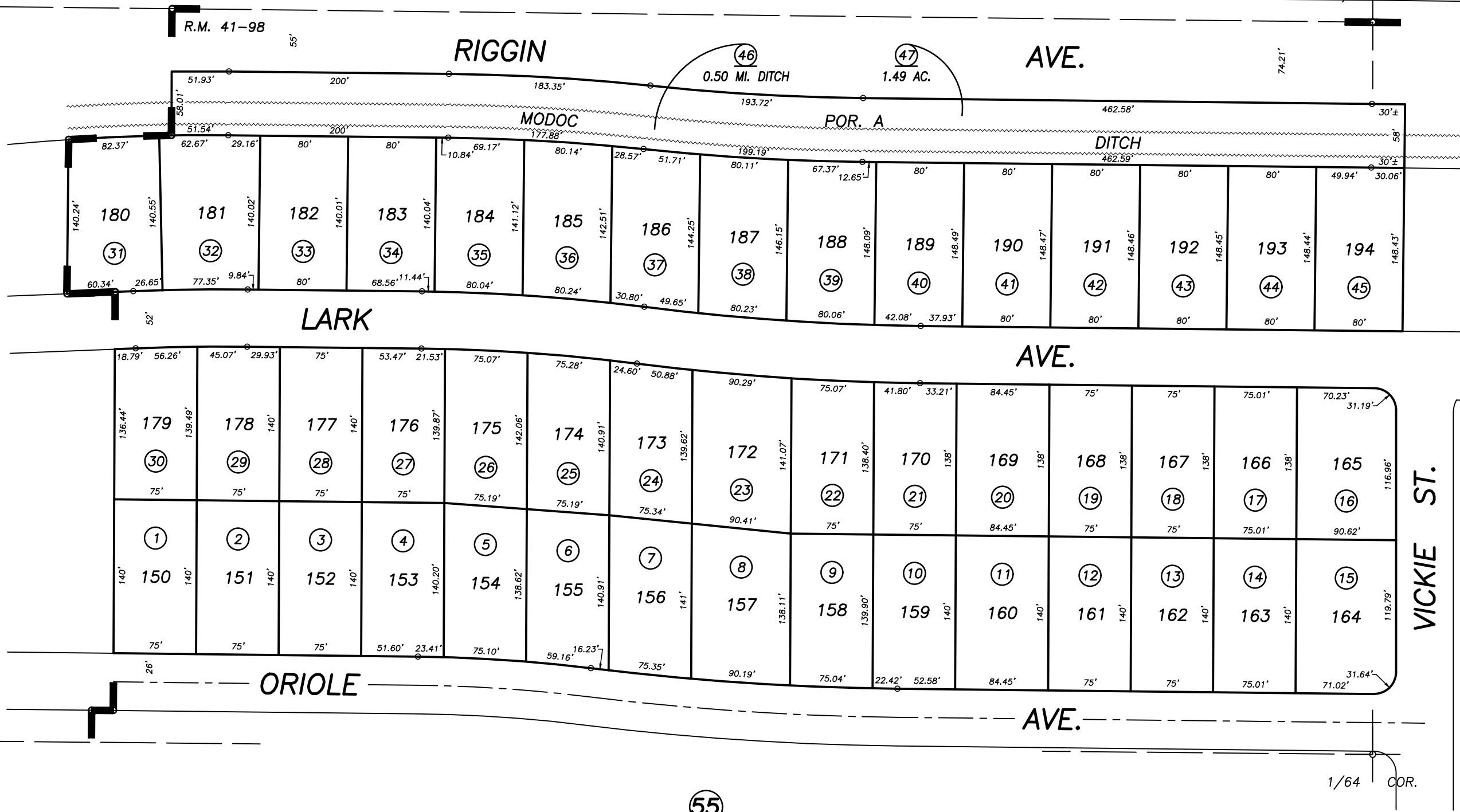
THIS MAP WAS PREPARED FOR LOCAL PROPERTY ASSESSMENT PURPOSES ONLY AND THE PARCELS SHOWN HEREON MAY NOT COMPLY WITH STATE AND LOCAL SUBDIVISION ORDINANCES, AND NO LIABILITY IS ASSUMED FOR THE USE OF THE INFORMATION SHOWN HEREON.

Bk. 078



N1/4 COR. NW1/4

N.1/4 COR.



1/64 COR.

1/64 COR.

POR. STERLING OAKS, UNIT NO. 2, R.M. 41-98

55

CITY OF VISALIA
ASSESSOR'S MAPS BK. 089 , PG. 56
COUNTY OF TULARE, CALIFORNIA, U.S.A.

NOTE: Assessor's Parcel Numbers Shown in Circles 1 123
Assessor's Block Numbers Shown in Ellipses

2006-0017013	10/13/2006	PHN
REVISION	DATE	TECH