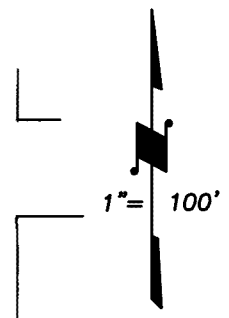
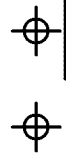


DISCLAIMER
THIS MAP WAS PREPARED FOR LOCAL PROPERTY ASSESSMENT PURPOSES ONLY AND THE PARCELS SHOWN HEREON MAY NOT COMPLY WITH STATE AND LOCAL SUBDIVISION ORDINANCES, AND NO LIABILITY IS ASSUMED FOR THE USE OF THE INFORMATION SHOWN HEREON. R & T CODE SEC. 327, 408.3, ETC.



12

14

10

ELOWIN AVE.

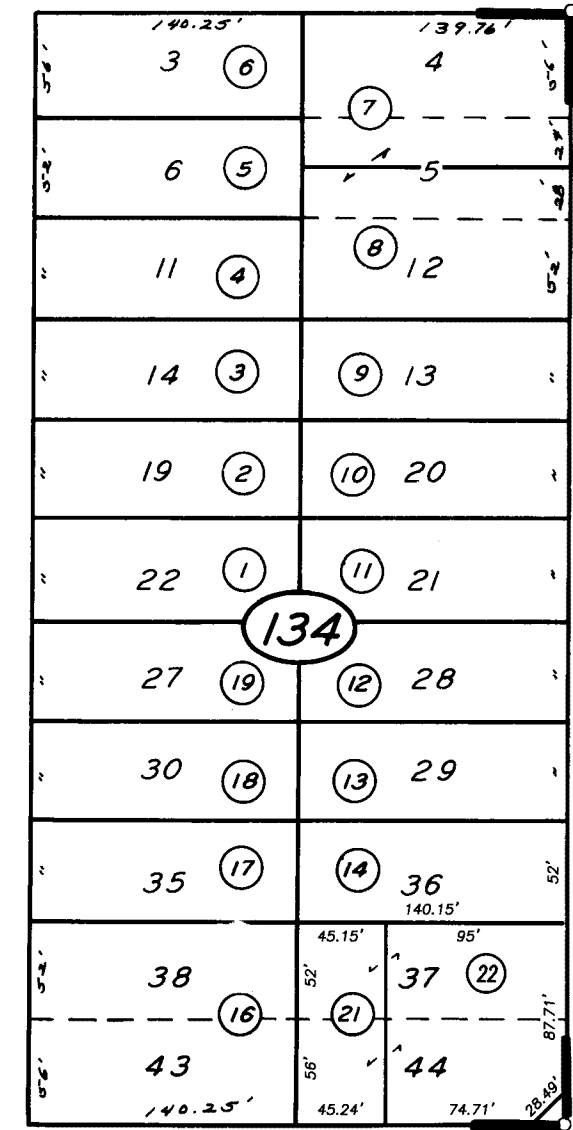
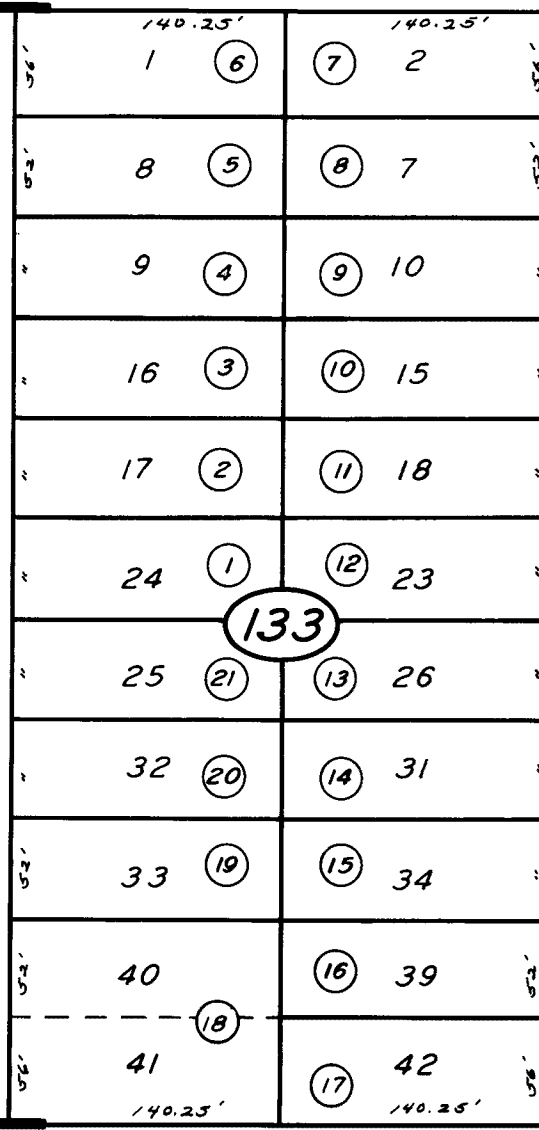
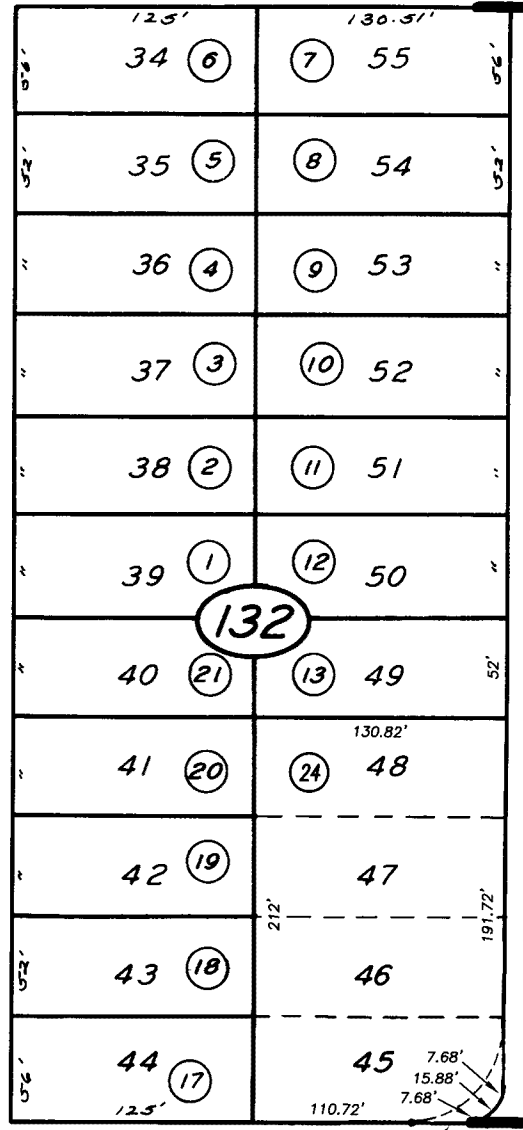
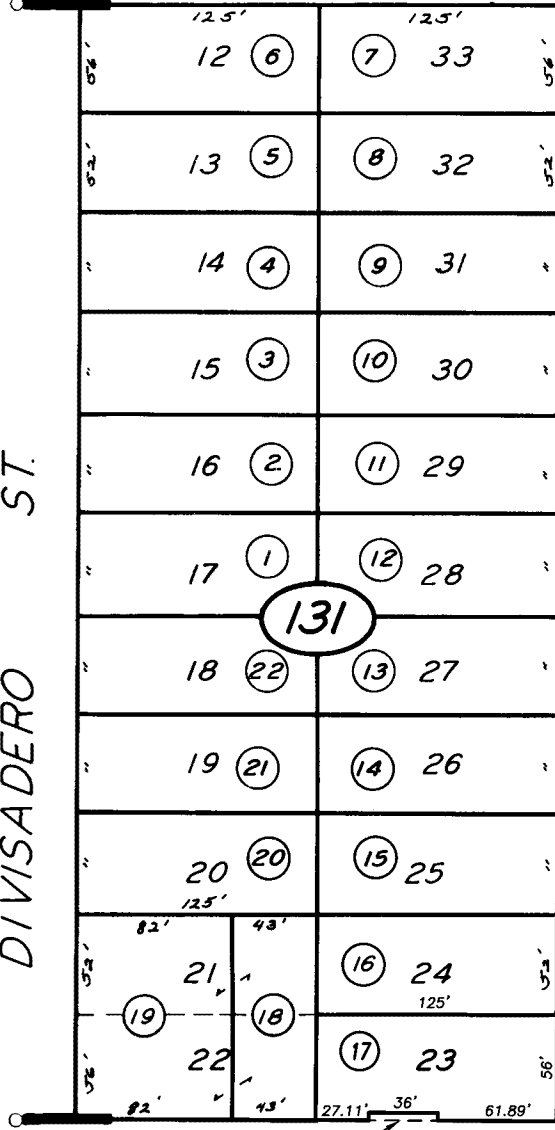
HALL AVE.

RINALDI ST.

PARK AVE.

GIDDINGS AVE.

DIVISADERO ST.



4' WD. PED. ACCESS ESMNT.

ABAND. V.4048 P.164

R.M. 19-95
R.M. 19-122

S 1/4 COR.

BK.93

TRACT NO. 93, R.M. 19-122
POR. CONNELLY SUB. NO. 3, R.M. 19-95

CITY OF VISALIA
ASSESSOR'S MAPS BK. 090 , PG. 13
COUNTY OF TULARE, CALIFORNIA, U.S.A.

NOTE: Assessor's Parcel Numbers Shown in Circles
Assessor's Block Numbers Shown in Ellipses

2018-0051703	11/2/2018	JMM
REVISION	DATE	TECH