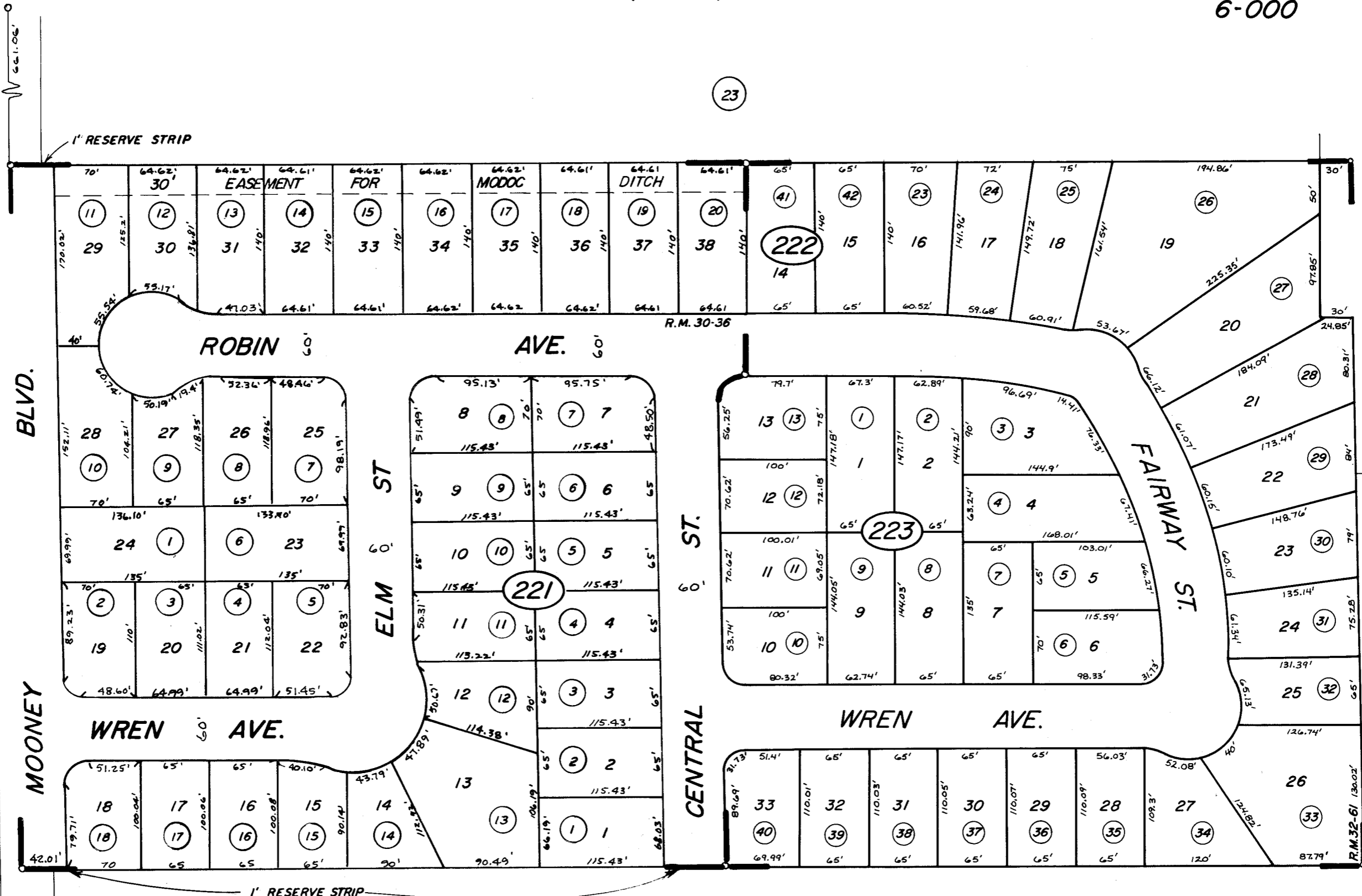


BK. 89



VALLEY OAK WEST NO. 1, R. M. 30-36  
POR. ENCINA COL., R. M. 8-33  
VALLEY OAK WEST NO. 2 R. M. 32-61

CITY OF VISALIA  
ASSESSOR'S MAPS BK. 90 PG. 22  
COUNTY OF TULARE, CALIF.

NOTE—ASSESSOR'S BLOCK NUMBERS SHOWN IN ELLIPSES  
ASSESSOR'S PARCEL NUMBERS SHOWN IN CIRCLES