

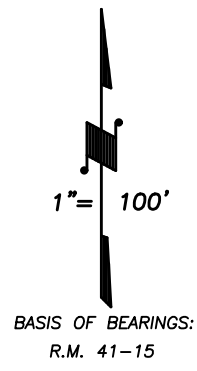
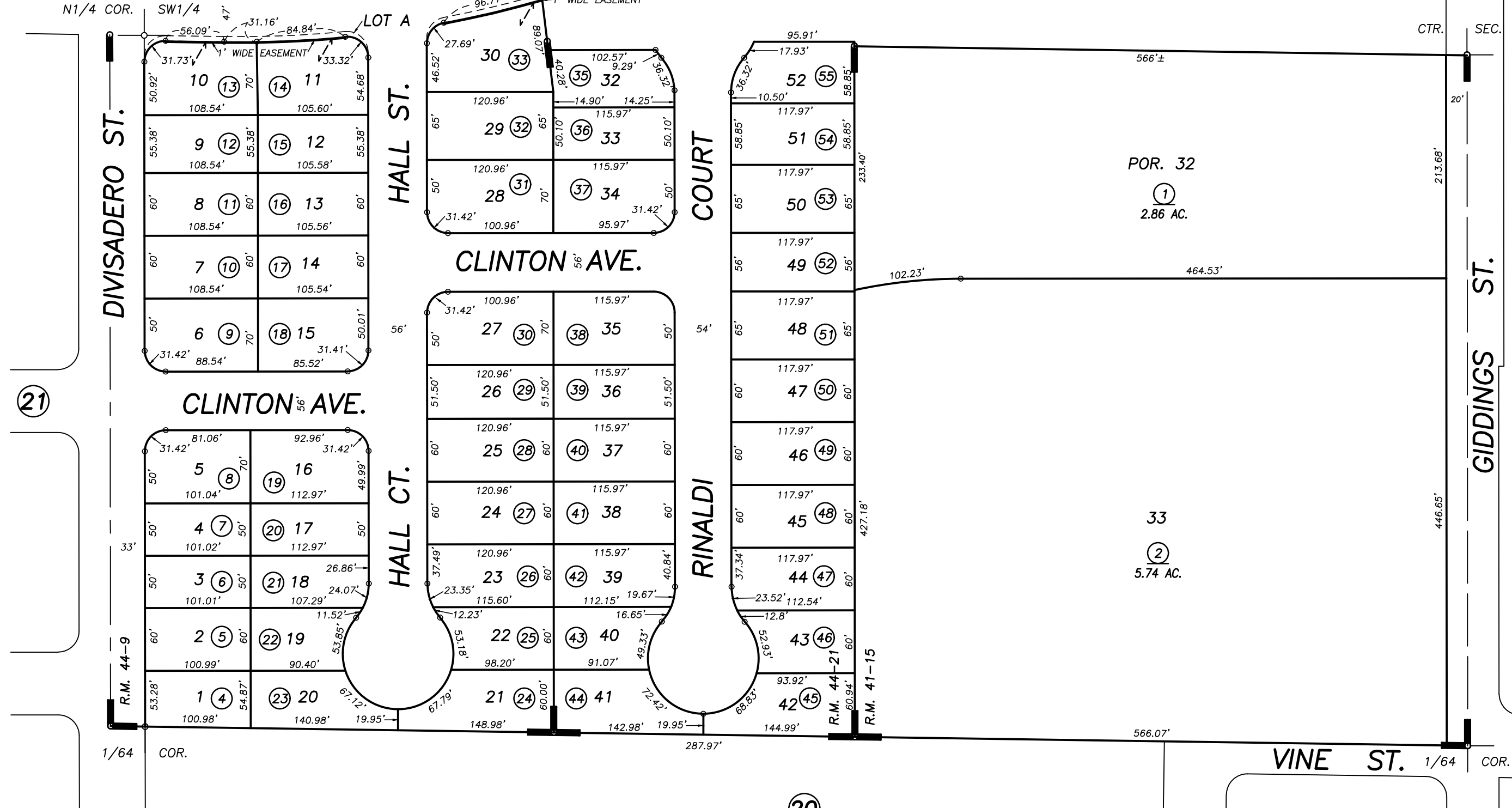
N1/2 OF NE1/4 OF SW1/4 SEC.19, T.18S., R.25E., M.D.B.&M.

Tax Area Codes 090-31

006-000

006-201

**DISCLAIMER**  
THIS MAP WAS PREPARED FOR LOCAL PROPERTY ASSESSMENT PURPOSES ONLY AND THE PARCELS SHOWN HEREON MAY NOT COMPLY WITH STATE AND LOCAL SUBDIVISION ORDINANCES, AND NO LIABILITY IS ASSUMED FOR THE USE OF THE INFORMATION SHOWN HEREON.



POR. LUISI ACRES, UNIT NO. 1, R.M. 41-15  
 POR. AMENDED LUISI ACRES NO. 5 - PHASE 1, R.M. 44-9  
 POR. LUISI ACRES NO. 5 - PHASE 2, R.M. 44-21

CITY OF VISALIA  
 ASSESSOR'S MAPS BK. 090 , PG. 31  
 COUNTY OF TULARE, CALIFORNIA, U.S.A.