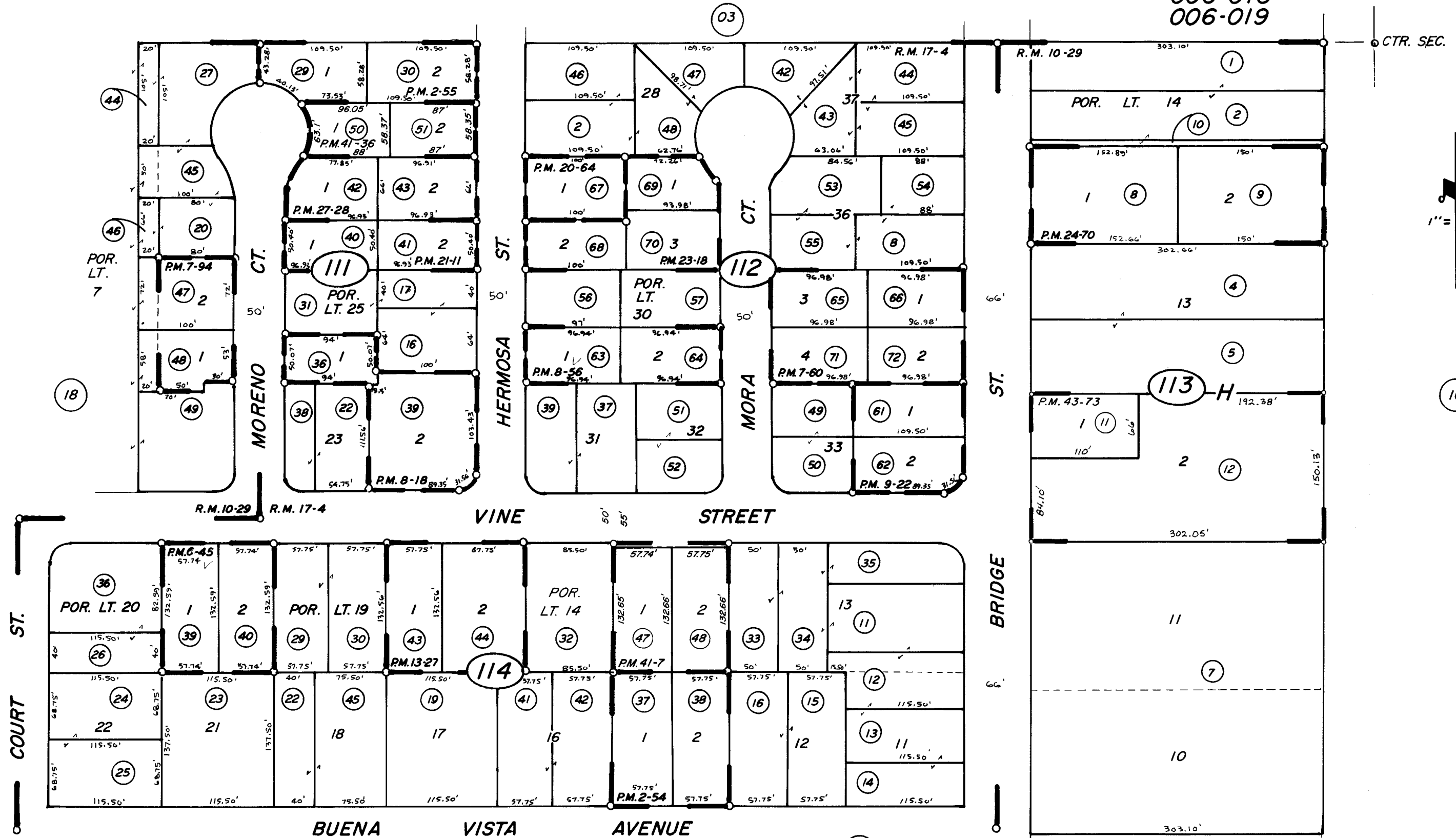


NE POR. OF N 1/2 OF SW 1/4 SEC. 20, T.18 S., R. 25 E., M. D. B. & M.

TAX CODE AREA **91-11**
 006-000
 006-018
 006-019



POR. JOHNSON TRACT R.M. 10-29
 POR. SWEET ADD. NO. 2 R.M. 17-4
 PARCEL MAP 154 P.M. 2-54
 PARCEL MAP 155 P.M. 2-55
 PARCEL MAP 545 P.M. 6-45
 PARCEL MAP 660 P.M. 7-60
 PARCEL MAP 694 P.M. 7-94
 PARCEL MAP 718 P.M. 8-18
 PARCEL MAP 756 P.M. 8-56

PARCEL MAP 822
 PARCEL MAP 1226
 PARCEL MAP 1963
 PARCEL MAP 2010
 PARCEL MAP 2217
 PARCEL MAP 2369
 PARCEL MAP 2627
 PARCEL MAP 4003
 PARCEL MAP 4032
 PARCEL MAP 4269

P.M. 9-22
 P.M. 13-27
 P.M. 20-64
 P.M. 21-11
 P.M. 23-18
 P.M. 24-70
 P.M. 27-28
 P.M. 41-7
 P.M. 41-36
 P.M. 43-73

ASSESSOR'S MAPS BK. 91, PG. 11
 COUNTY OF TULARE, CALIF.

NOTE-ASSESSOR'S BLOCK NUMBERS SHOWN IN ELLIPSES
 ASSESSOR'S PARCEL NUMBERS SHOWN IN CIRCLES