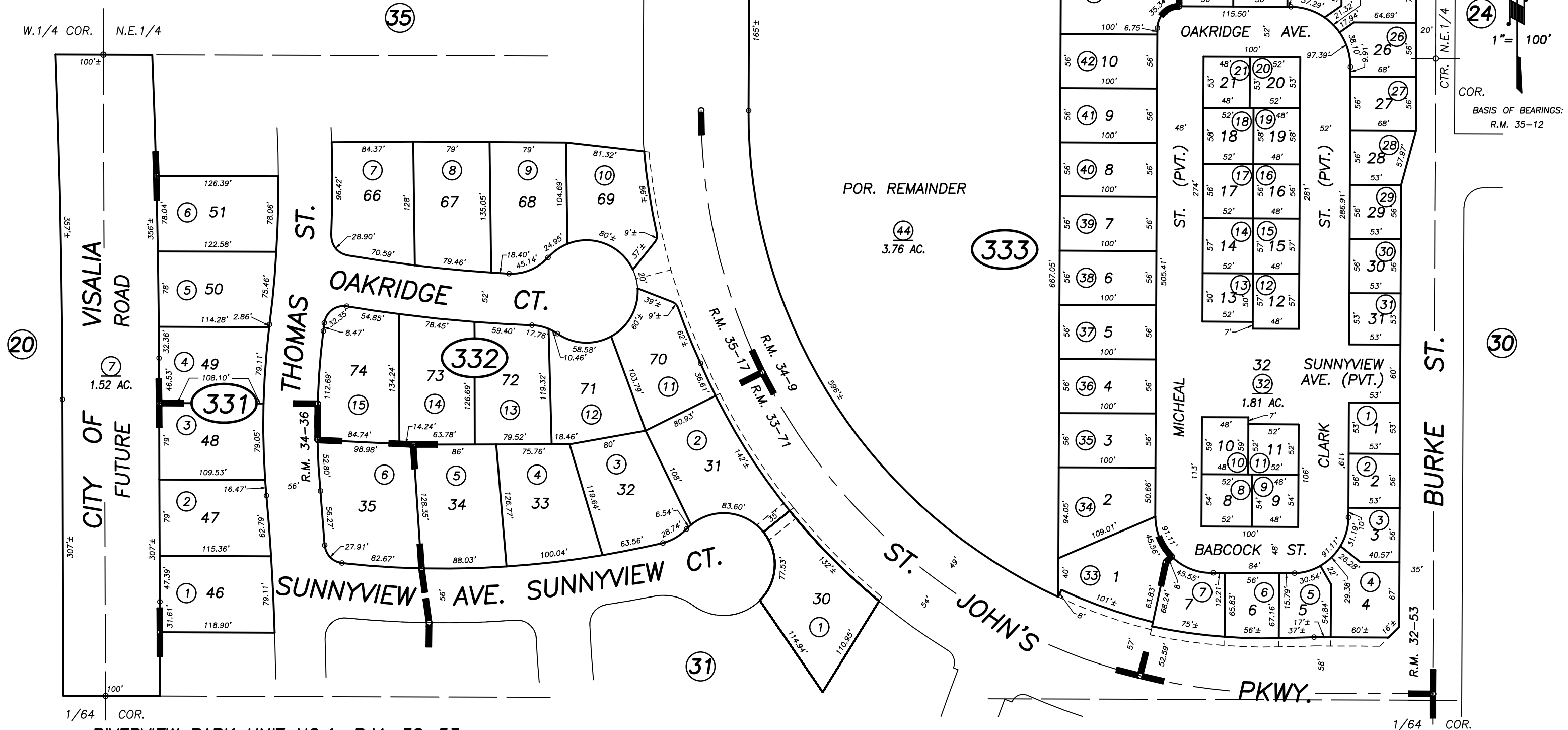


DISCLAIMER  
THIS MAP WAS PREPARED FOR LOCAL PROPERTY ASSESSMENT PURPOSES ONLY AND THE PARCELS SHOWN HEREON MAY NOT COMPLY WITH STATE AND LOCAL SUBDIVISION ORDINANCES, AND NO LIABILITY IS ASSUMED FOR THE USE OF THE INFORMATION SHOWN HEREON.

006-030  
006-033



1/64 COR.  
RIVERVIEW PARK UNIT NO.1, R.M. 32-53  
POR. ISLAND OAKS SUB., UNIT NO.1, R.M. 33-71  
POR. RIVERVIEW PARK UNIT NO.2, R.M. 34-9  
POR. ISLAND OAKS SUB., UNIT NO.2, R.M. 34-36  
POR. ISLAND OAKS SUB., UNIT NO.3, R.M. 35-17

1/64 COR.  
CITY OF VISALIA  
ASSESSOR'S MAPS BK. 091 , PG. 33  
COUNTY OF TULARE, CALIFORNIA, U.S.A.