

DISCLAIMER
THIS MAP WAS PREPARED FOR LOCAL PROPERTY ASSESSMENT PURPOSES ONLY AND THE PARCELS SHOWN HEREON MAY NOT COMPLY WITH STATE AND LOCAL SUBDIVISION ORDINANCES, AND NO LIABILITY IS ASSUMED FOR THE USE OF THE INFORMATION SHOWN HEREON. R & T CODE SEC. 327, 408.3, ETC.

BK.90

0-N 1/4 COR. HOUSTON AVE.

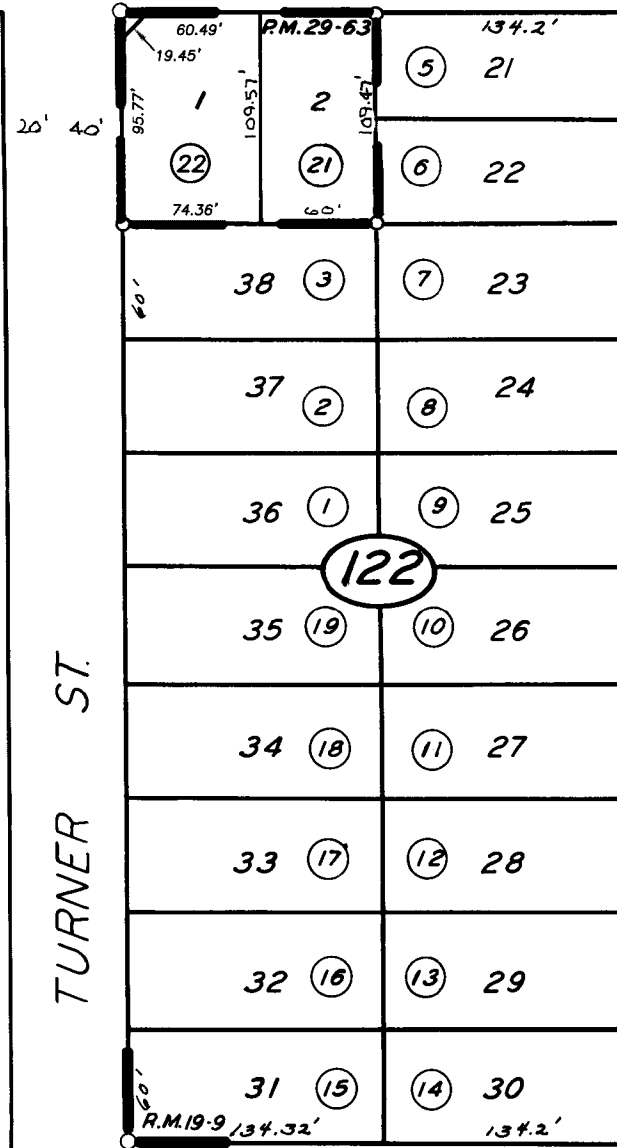
VISALIA SCHOOL DIST.

(HOUSTON AVE. SCHOOL)

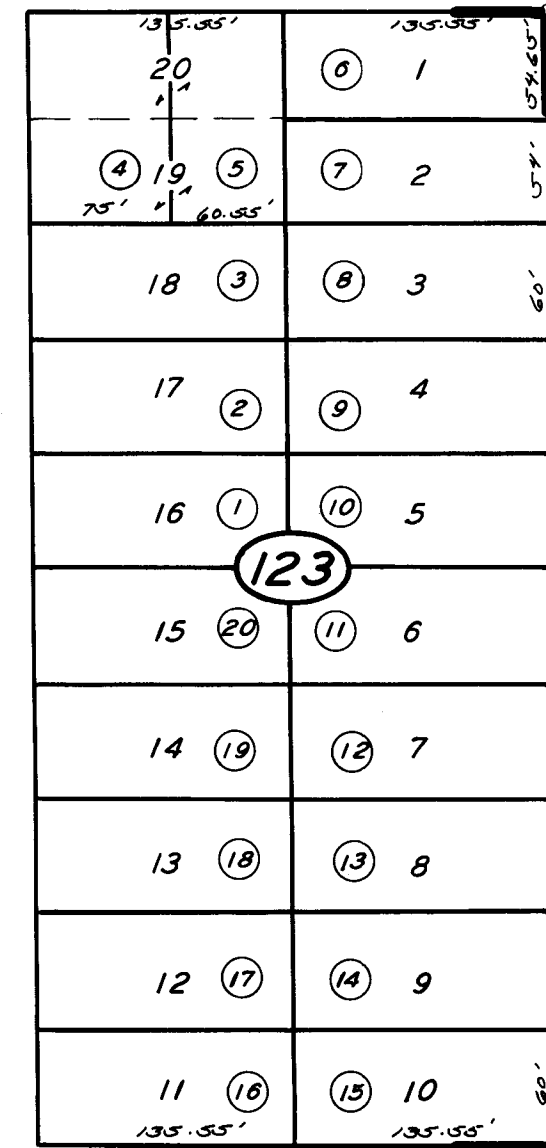
121

2
10 AC.±

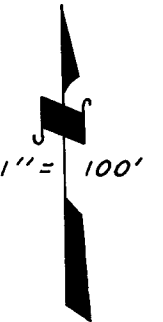
05



ROOSEVELT



AVE.



13

SMITH SUB., R.M. 19-9
PARCEL MAP 2862, P.M. 29-63

CITY OF VISALIA
ASSESSOR'S MAPS BK. 093 , PG. 12
COUNTY OF TULARE, CALIFORNIA, U.S.A.