

**DISCLAIMER**  
 THIS MAP WAS PREPARED FOR LOCAL PROPERTY ASSESSMENT PURPOSES ONLY. THE PARCELS SHOWN HEREON MAY NOT COMPLY WITH STATE AND LOCAL SUBDIVISION ORDINANCES. NO LIABILITY IS ASSUMED FOR THE USE OF THE INFORMATION HEREON. R & T CODE SEC. 327, 408.3, ETC.  
 REVISED: 9/06/2017  
 REASON: 2017-0013637  
 CAD TECH: ASG

S 1/2 OF NE 1/4 OF NE 1/4 SEC. 29, T.18S., R.25E., M. D. B. & M.

TAX CODE AREA 94-15  
 006-096

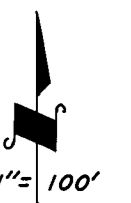
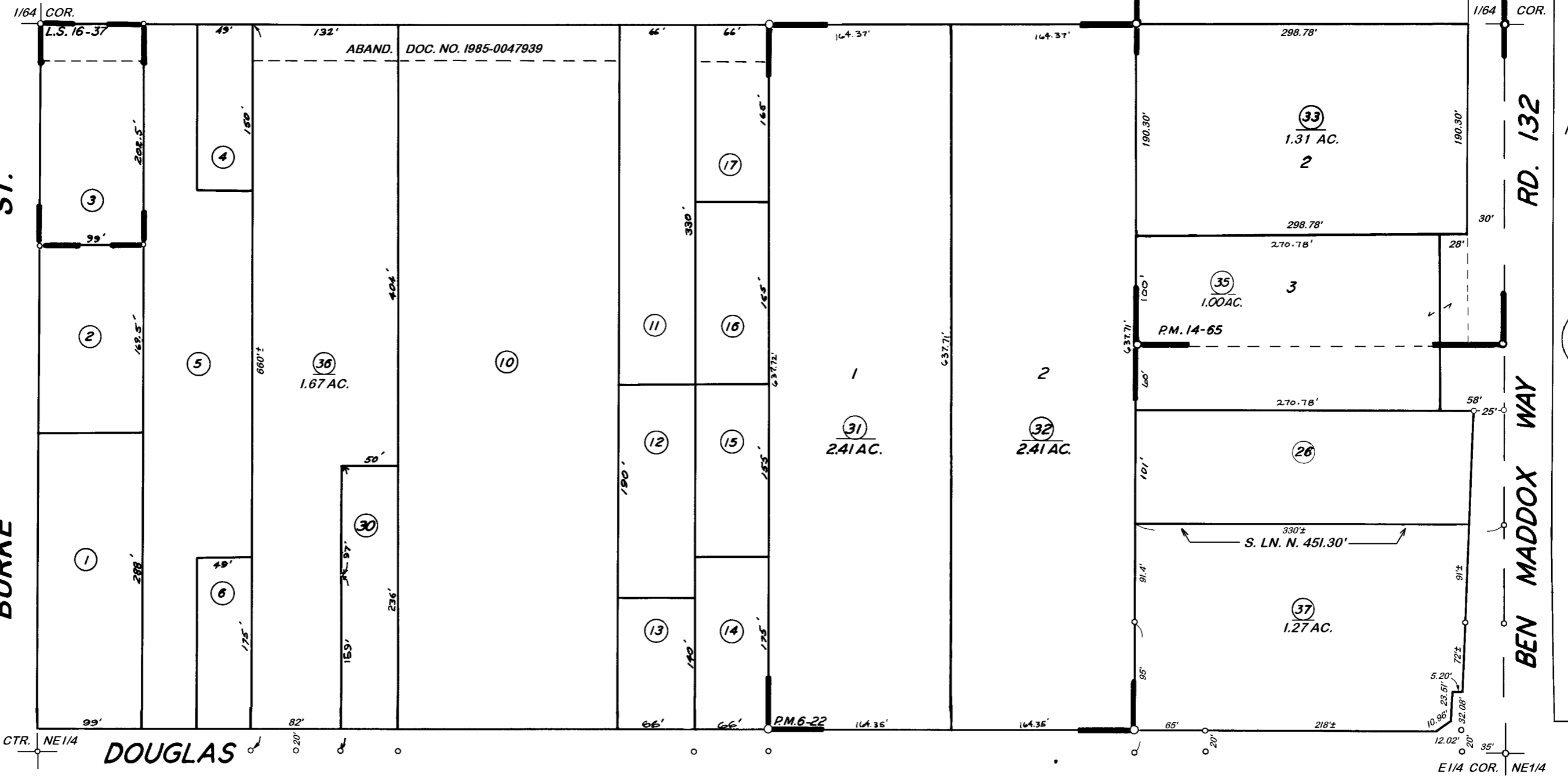
**ROOSEVELT AVE**

**BURKE ST.**

(12)

**BURKE ST.**

**DOUGLAS**



BK. 98

POR. PARCEL MAP 1364, P.M. 14-65  
 PARCEL MAP 522, P.M. 6-22  
 RECORD OF SURVEY, L.S. 16-37

**CITY OF VISALIA**  
 ASSESSOR'S MAPS BK. 094, PG. 15.  
 COUNTY OF TULARE, CALIF.

NOTE — ASSESSOR'S BLOCK NUMBERS SHOWN IN ELLIPSES  
 ASSESSOR'S PARCEL NUMBERS SHOWN IN CIRCLES

