

POR. NE 1/4 SEC. 36, T.18S., R.24E., M.D.B. & M.

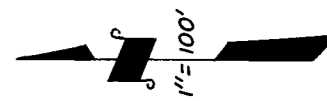
TAX CODE AREA

95-05

09

08

6-000



MINERAL KING AVE. HWY. 198

CITY LIMITS LINE

AVE.

NOBLE

DRIVE

DRIVE

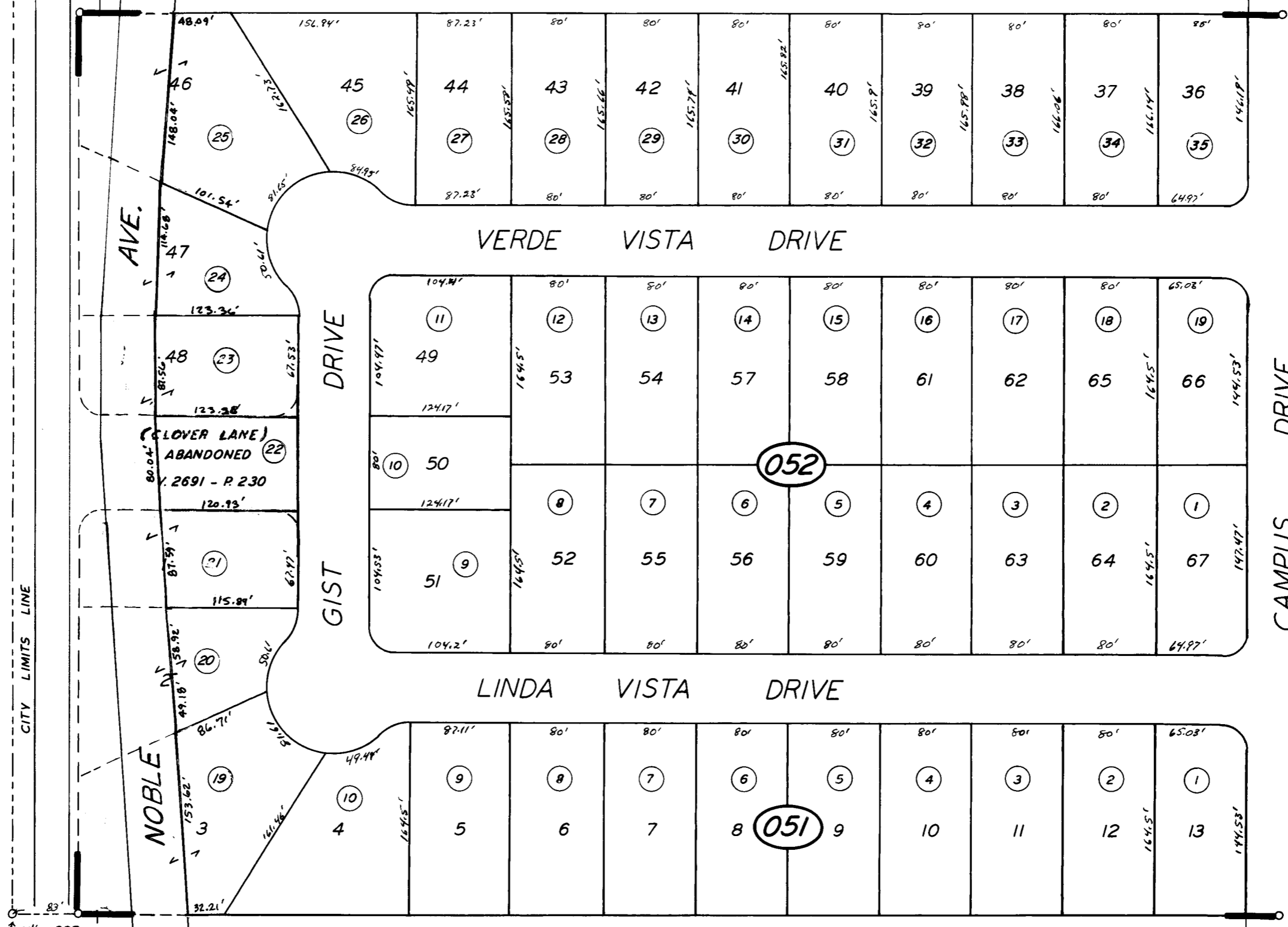
VERDE VISTA DRIVE

LINDA VISTA DRIVE

DRIVE

DRIVE

BK.89



04

CITY OF VISALIA

POR. COLLEGE ACRES R.M. 19-76
RECORD OF SURVEY, L.S. 19-24 (Q HWY. 198)

ASSESSOR'S MAPS BK. 95, PG. 05

COUNTY OF TULARE, CALIF.

NOTE - ASSESSOR'S BLOCK NUMBERS SHOWN IN ELLIPSES
ASSESSOR'S PARCEL NUMBERS SHOWN IN CIRCLES

