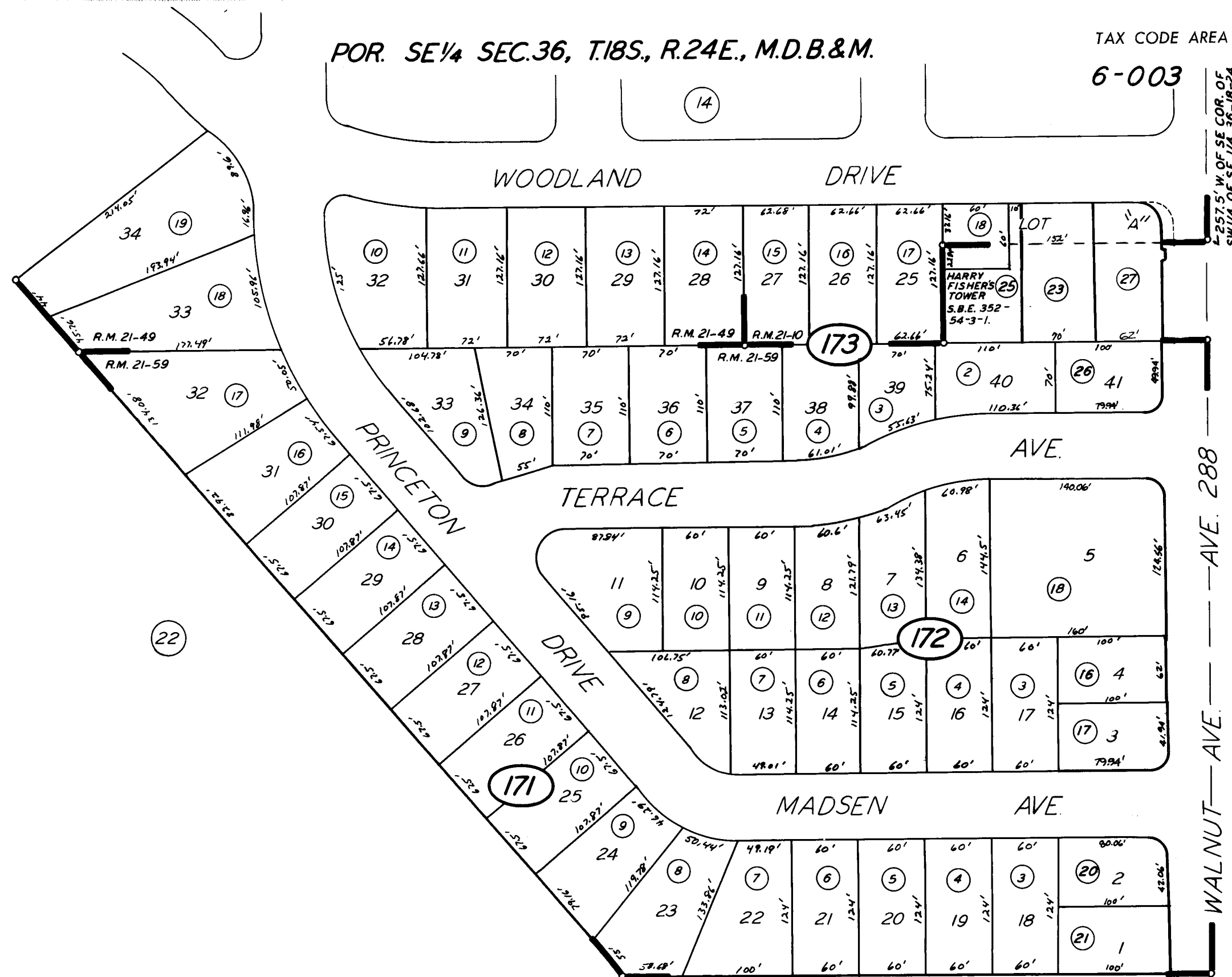
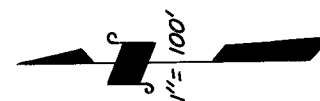


POR. SE 1/4 SEC. 36, T. 18 S., R. 24 E., M. D. B. & M.

TAX CODE AREA
6-003

95-17



L 257.5' W. OF SE COR. OF SW 1/4 OF SE 1/4 36-18-24

BK. 121

POR. COLLEGE VILLAGE TR. 2 R.M. 21-49 (29) CITY OF VISALIA

WALNUT TERRACE R.M. 21-59

ASSESSOR'S MAPS BK. 95, PG. 17

POR. COLLEGE VILLAGE TR. 1 R.M. 21-10

COUNTY OF TULARE, CALIF.

NOTE - ASSESSOR'S BLOCK NUMBERS SHOWN IN ELLIPSES
ASSESSOR'S PARCEL NUMBERS SHOWN IN CIRCLES

