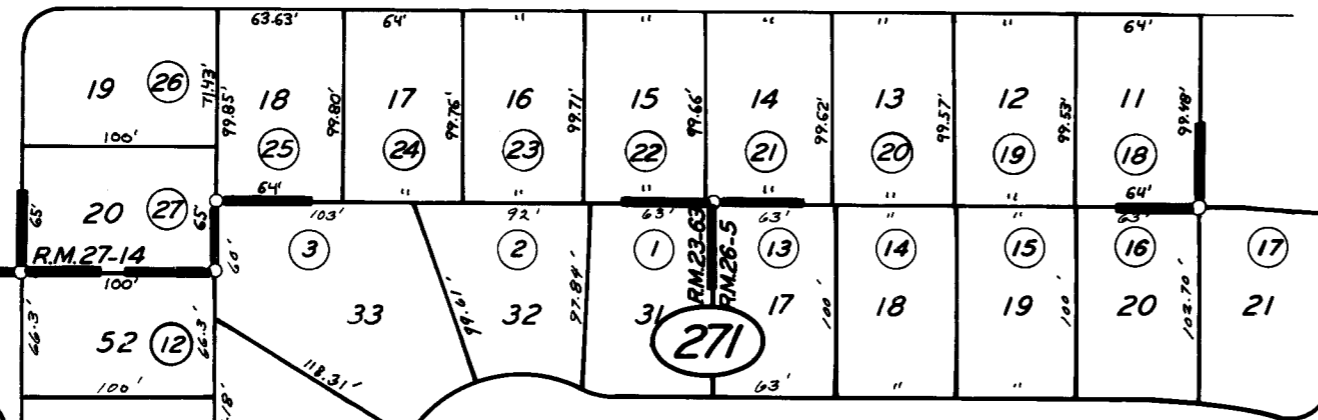


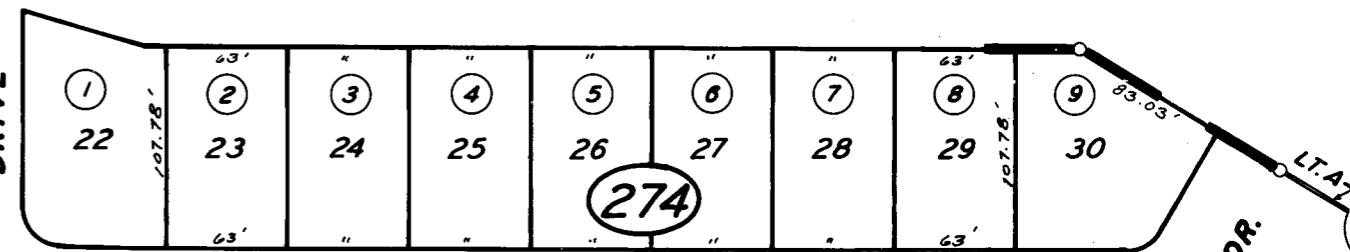
COLLEGE AVE.

31

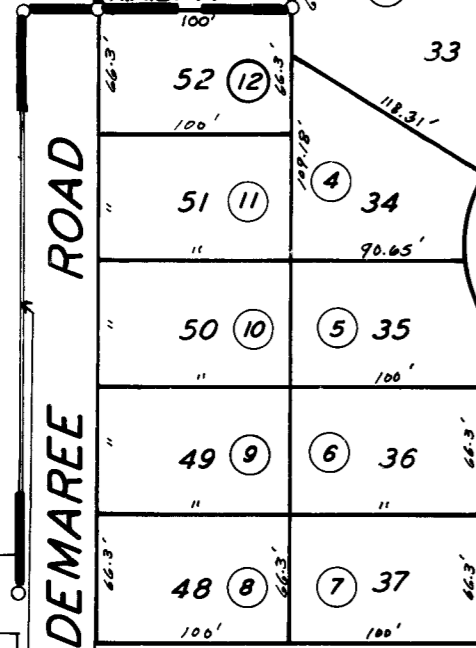


LEILA DRIVE

FAIRVIEW DRIVE



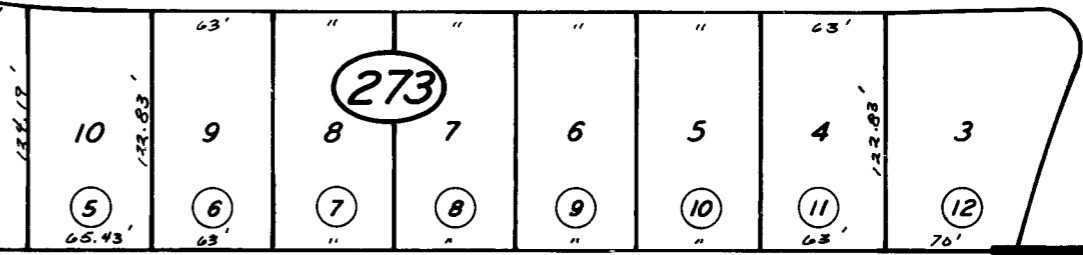
DRIVE



DEMAREE ROAD

SILVERVALE AVE.

WELLSLEY DRIVE



COUNTY CENTER DR.

BK. 87

1' FUTURE ST.
ASSESSED WITH
095-281-10

POR. STONEGATE ESTATES NO. 1 R.M. 23-63
POR. STONEGATE ESTATES NO. 4 R.M. 26-5
STONEGATE ESTATES NO. 7 R.M. 27-14

CITY OF VISALIA
ASSESSOR'S MAPS BK. 95, PG. 27
COUNTY OF TULARE, CALIF.

NOTE - ASSESSOR'S BLOCK NUMBERS SHOWN IN ELIPSES
ASSESSOR'S PARCEL NUMBERS SHOWN IN CIRCLES