

BK. 93

N 1/4 COR.

AVE. 296

MINERAL KING AVE.

OVERCROSSING

POST MILE 9.26

HWY.

198

OVERCROSSING

1"=100'

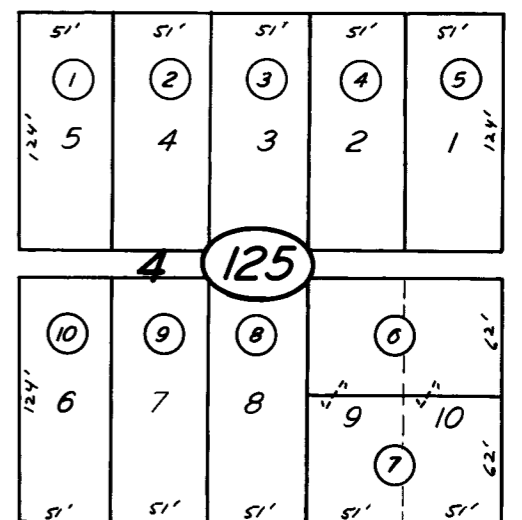
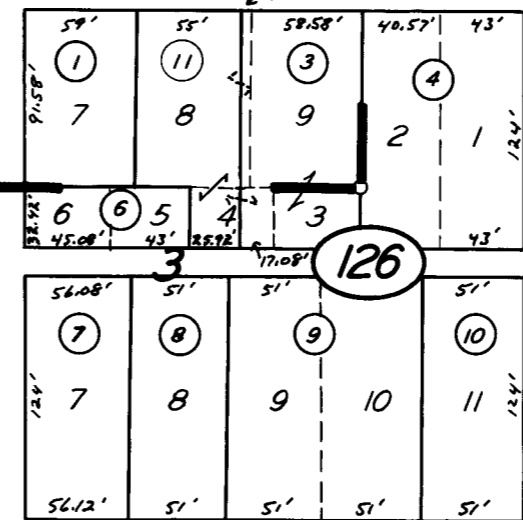
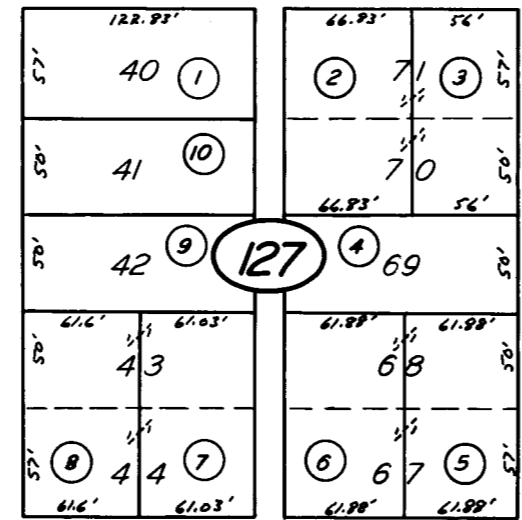
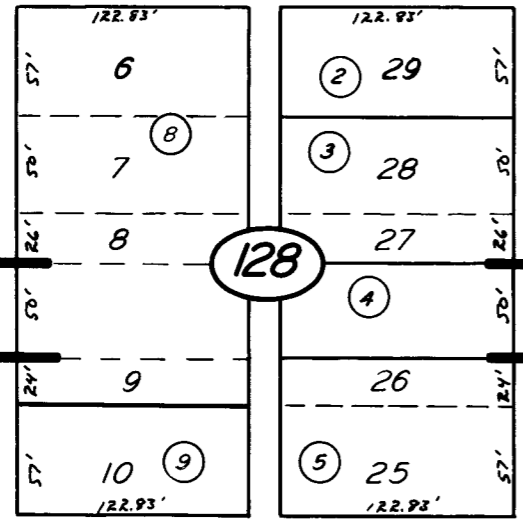
05

GIDDINGS

NOBLE

AVE.

13



POR. OAK PARK R.M. 17-52
 POR. EVERS SUB. R.M. 17-46
 SWANK SUB. R.M. 17-58

11

CITY OF VISALIA
 ASSESSOR'S MAPS BK. 96, PG. 12
 COUNTY OF TULARE, CALIF.

NOTE - ASSESSOR'S BLOCK NUMBERS SHOWN IN ELLIPSES
 ASSESSOR'S PARCEL NUMBERS SHOWN IN CIRCLES