

08

AVE. 292

TULARE AVE.

AVE.

CTR. SEC.

ST.

VISALIA SCHOOL DIST.
(DIVISADERO SCHOOL)

ST.

251

AVE.

1"=100'

253

1
9.10 AC.±

LIMITS

32

DIVISADERO ST.

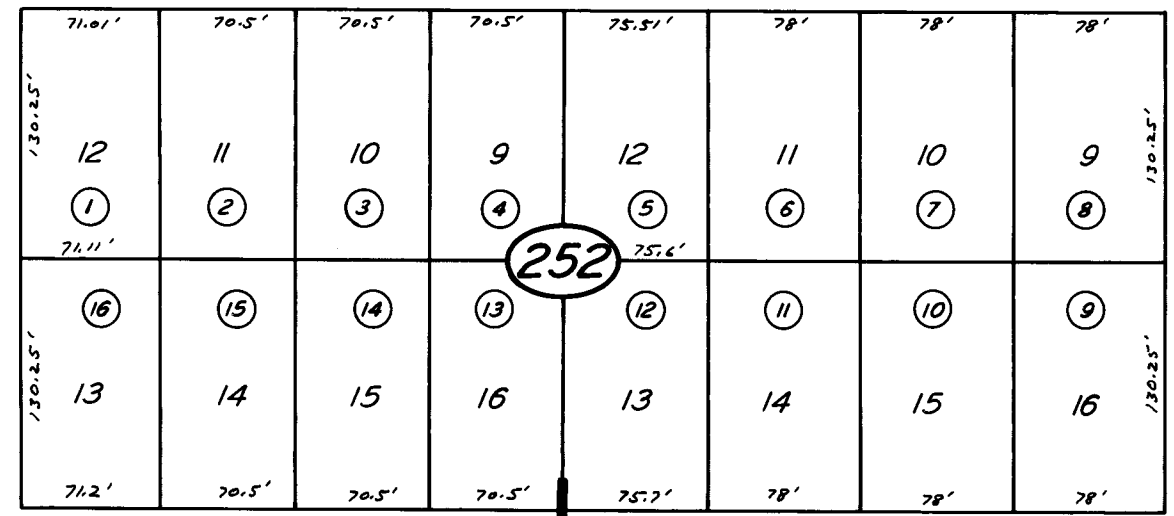
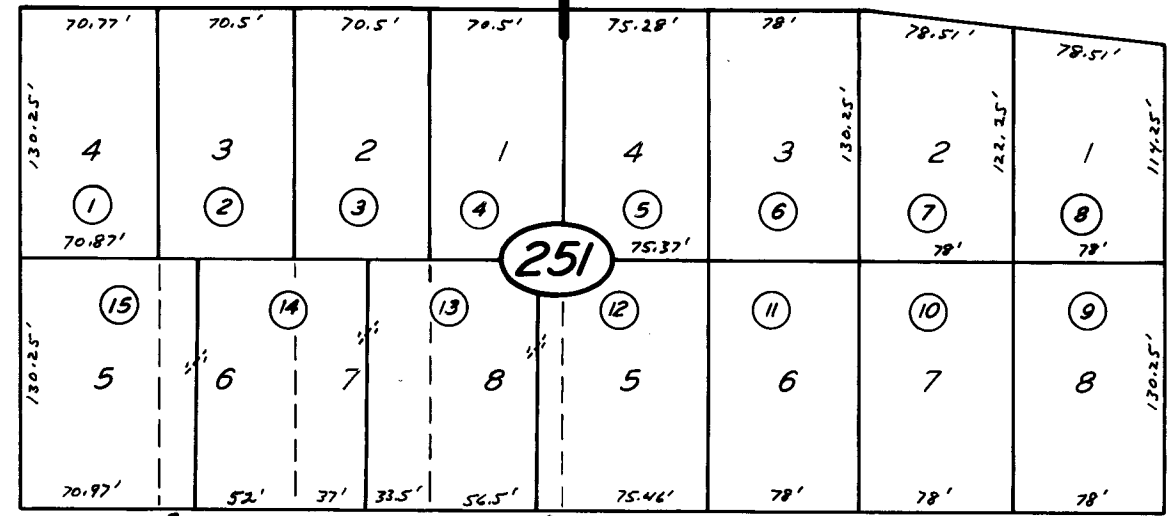
DOLLNER ST.

IRIS AVE.

AVE.

GIDDINGS CITY

24



MILLS SUB. TR. NO. 1 R.M. 20-95
 MILLS SUB. TR. NO. 2 R.M. 20-96

CITY OF VISALIA
 ASSESSOR'S MAPS BK. 96, PG. 25
 COUNTY OF TULARE, CALIF.

NOTE — ASSESSOR'S BLOCK NUMBERS SHOWN IN ELLIPSES
 ASSESSOR'S PARCEL NUMBERS SHOWN IN CIRCLES

